

1.0 MATERIAL & FINISH

- 1.1 CABLE ADAPTOR: BRASS, GOLD PLATED
- 1.2 CENTER CONTACT: BERYLLIUM COPPER ALLOY, GOLD PLATED
- 1.3 INSULATOR: PTFE
- 1.4 HOUSING AND SHROUD: STAINLESS STEEL, PASSIVATED

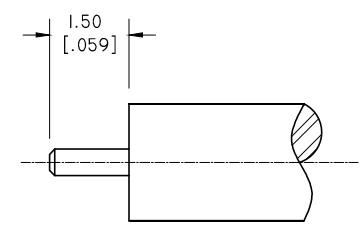
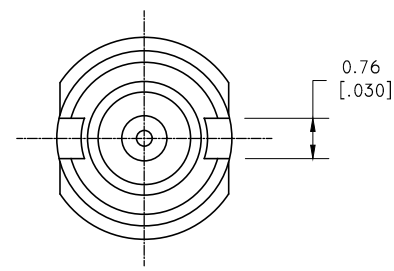
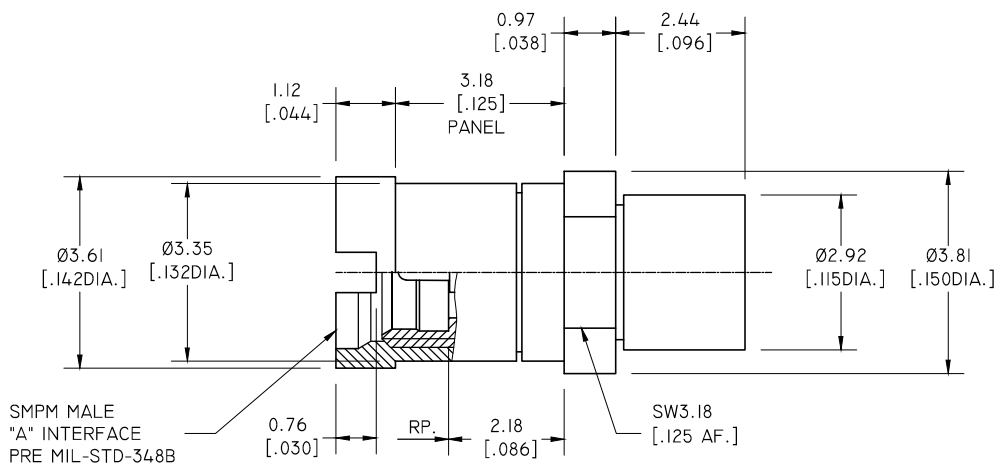
3.0 ELECTRICAL SPECIFICATIONS:

- 3.1 IMPEDANCE: 50 Ω
- 3.2 FREQUENCY RANGE: DC~65GHZ
- 3.3 VSWR: 1.30 MAX. @ DC~40GHZ

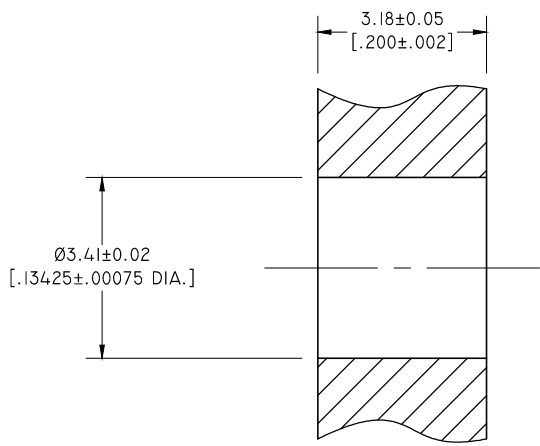
2.0 ENVIRONMENTAL DATA:

- 2.1 TEMPERATURE RANGE: -55°C~+165°C
- 2.2 2011/65/EU(RoHS) AND 2015/863/(RoHS): COMPLIANT
- 2.3 1999/45/EC(REACH): COMPLIANT

REVISIONS			
REV.	DESCRIPTION	DATE	APPROVED
A	INITIAL RELEASE	06/19/19	J. QU



CABLE STRIPPING DIMENSIONS



RECOMMENDED MOUNTING HOLE

PART NO.	"A" INTERFACE
ANO 9411-2034-1	FULL DETENT
ANO 9411-2034-2	SMOOTH BORE

DRAWN	W. YANG	DATE	06/19/19
CHECKED	L. YANG	DATE	06/19/19
APPROVED	J. QU	DATE	06/19/19
UNLESS OTHERWISE SPECIFIED DIMENSIONS ARE IN MILLIMETERS. DIMENSIONS IN [] ARE IN INCHES FOR CUSTOMER REFERENCE ONLY UNLESS OTHERWISE SPECIFIED TOLERANCE ARE:		THESE DRAWINGS AND SPECIFICATIONS ARE THE PROPERTY OF ANOISON ELECTRONICS LTD AND SHOULD NOT BE USED WITHOUT WRITTEN PERMISSION COPYRIGHT © 2019 ANOISON ELECTRONICS LTD	
.XX	±0.13 [.005"]		
.X	±0.20 [.008"]		
X	±0.50 [.019"]		
.X°	±1°		
X°	±2°		



TITLE			
SMPM STRAIGHT MALE BULKHEAD SOLDER FOR .086 CABLE			
VIEW		PART NO.	
		ANO 9411-2034	
SIZE	SCALE	SHEET	REV.
A3	10:1	1/1	A