

4

3

2

1

MATERIAL & FINISH:

- 1 BODY: STAINLESS STEEL, PASSIVATED
- 2 CENTER CONTACT: BERYLLIUM COPPER, GOLD PLATED
- 3 CABLE ADAPTOR: BRASS, GOLD PLATED
- 4 INSULATOR: PTFE
- 5 DIELECTRIC STOP: PTFE
- 6 SNAP RING: BERYLLIUM COPPER, GOLD PLATED

ELECTRICAL DATA:

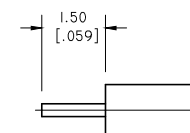
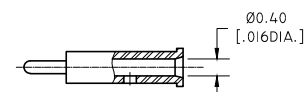
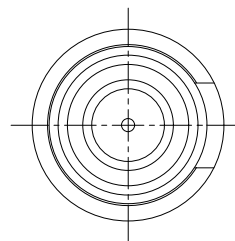
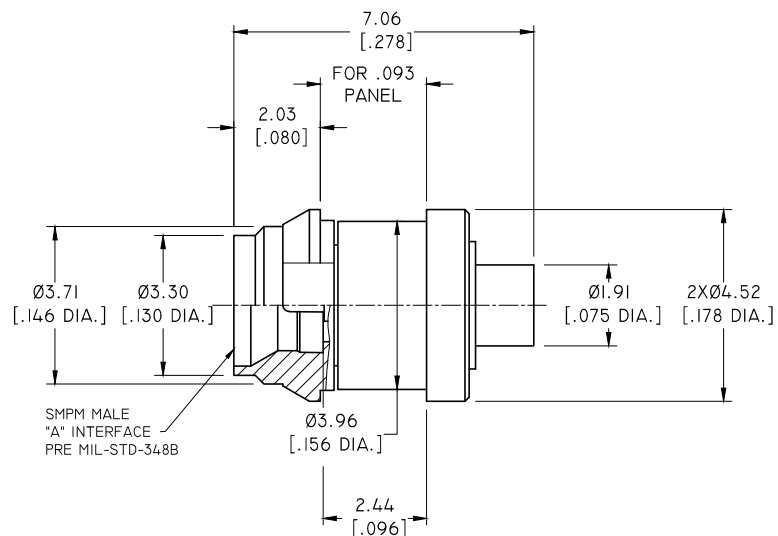
- 1 IMPEDANCE: 50 Ω
- 2 FREQUENCY RANGE: DC-65 GHZ
- 3 VSWR: 1.25 TYP. AT DC-26.5 GHZ

ENVIRONMENTAL DATA:

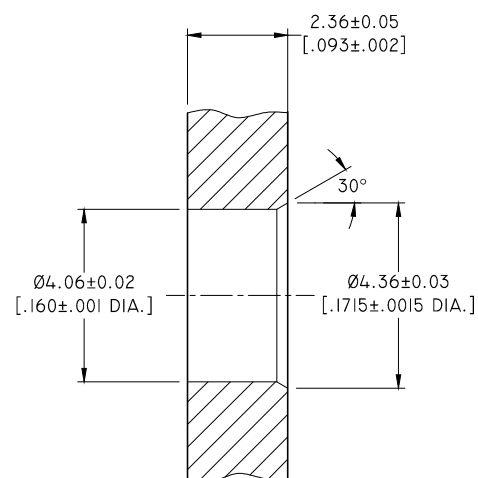
- 1 TEMPERATURE RANGE: -55°C~+125°C
- 2 2011/65/EU (RoHS): COMPLIANT

REVISIONS

REV.	DESCRIPTION	DATE	APPROVED
A	INITIAL RELEASE	07/24/18	J. QU



CABLE STRIPPING DIMENSIONS



PANEL DRILLING

PART NO.	"A" INTERFACE
ANO 9411-1024-1	FULL DETENT
ANO 9411-1024-2	SMOOTH BORE

DRAWN	W. YANG	DATE	07/24/18
CHECKED	X. B. YANG	DATE	07/24/18
APPROVED	J. QU	DATE	07/24/18
UNLESS OTHERWISE SPECIFIED DIMENSIONS ARE IN MILLIMETERS. DIMENSIONS IN [] ARE IN INCHES FOR CUSTOMER REFERENCE ONLY UNLESS OTHERWISE SPECIFIED TOLERANCE ARE:		THESE DRAWINGS AND SPECIFICATIONS ARE THE PROPERTY OF ANOISON ELECTRONICS LTD AND SHOULD NOT BE USED WITHOUT WRITTEN PERMISSION COPYRIGHT © 2018 ANOISON ELECTRONICS LTD	
.XX	+0.13 [.005"]		
.X	+0.20 [.008"]		
X	+0.50 [.019"]		
.X°	±1°		
X°	±2°		



TITLE
SMPM MALE SNAP-IN BULKHEAD MOUNT FOR .047 CABLE

VIEW



PART NO.
ANO 9411-1024

SIZE	SCALE	SHEET	REV.
A3	8:1	1/1	A