

4

3

2

1

## MATERIAL &amp; FINISH:

- 1 BODY: STAINLESS STEEL, PASSIVATED
- 2 CENTER CONTACT: BERYLLIUM COPPER, GOLD PLATED
- 3 INSULATOR: PTFE

## ENVIRONMENTAL DATA:

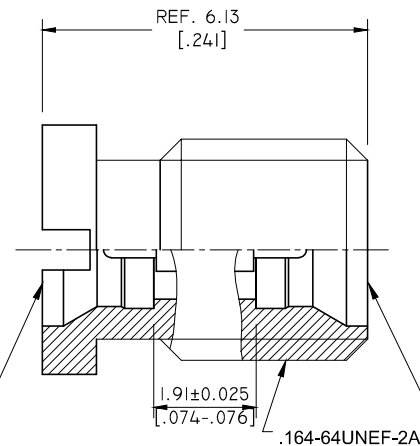
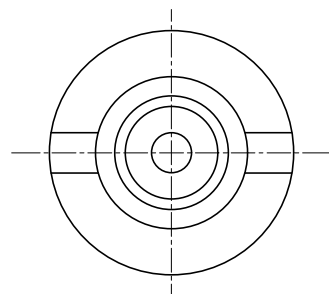
- 1 TEMPERATURE RANGE: -55°C~+125°C
- 2 2011/65/EU(RoHS) AND 2015/863/(RoHS): COMPLIANT
- 3 1999/45/EC(REACH): COMPLIANT

## ELECTRICAL DATA:

- 1 IMPEDANCE: 50 Ω
- 2 FREQUENCY RANGE: DC~65 GHZ
- 3 VSWR: 1.15 MAX. AT DC TO 18 GHZ  
1.30 MAX. AT 18 TO 40 GHZ  
1.50 MAX. AT 40 TO 65 GHZ

## REVISIONS

REV.	DESCRIPTION	DATE	APPROVED
A	INITIAL RELEASE	09/17/19	J. QU



SMPM MALE  
"A" INTERFACE  
PRE MIL-STD-348B

SMPM MALE  
"B" INTERFACE  
PRE MIL-STD-348B

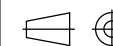
PART NO.	"A" INTERFACE	"B" INTERFACE
ANO 941-941-I512-1	FULL DETENT	FULL DETENT
ANO 941-941-I512-2	FULL DETENT	SMOOTH BORE
ANO 941-941-I512-3	SMOOTH BORE	FULL DETENT
ANO 941-941-I512-4	SMOOTH BORE	SMOOTH BORE

DRAWN	W. YANG	DATE	09/17/19
CHECKED	X. B. YANG	DATE	09/17/19
APPROVED	J. QU	DATE	09/17/19
UNLESS OTHERWISE SPECIFIED DIMENSIONS ARE IN MILLIMETERS. DIMENSIONS IN [ ] ARE IN INCHES FOR CUSTOMER REFERENCE ONLY UNLESS OTHERWISE SPECIFIED TOLERANCE ARE:		THESE DRAWINGS AND SPECIFICATIONS ARE THE PROPERTY OF ANOISON ELECTRONICS LTD AND SHOULD NOT BE USED WITHOUT WRITTEN PERMISSION COPYRIGHT © 2019 ANOISON ELECTRONICS LTD	
.XX	+0.13 [.005"]		
.X	+0.20 [.008"]		
X	+0.50 [.019"]		
.X°	±1°		
X°	±2°		



TITLE  
ADAPTER, SMPM MALE TO SMPM MALE

VIEW



PART NO.

ANO 941-941-I512

SIZE  
A3SCALE  
10:1SHEET  
1/1REV.  
A

4

3

2

1