

4

3

2

1

MATERIAL & FINISH:

- 1 BODY: BRASS, GOLD PLATED
- 2 CENTER CONTACT: BERYLLIUM COPPER, GOLD PLATED
- 3 OUTER CONTACT: BERYLLIUM COPPER, GOLD PLATED
- 4 INSULATOR: PTFE
- 5 CAP: BRASS, GOLD PLATED

ELECTRICAL DATA:

- 1 IMPEDANCE: 50 Ω
- 2 FREQUENCY RANGE: DC-18 GHz
- 3 VSWR: 1.40 MAX.

ENVIRONMENTAL DATA:

- 1 TEMPERATURE RANGE: -55°C ~ +125°C
- 2 2011/65/EU(RoHS) AND 2015/863/(RoHS): COMPLIANT
- 3 1907/2006/EC(REACH): COMPLIANT

REVISIONS			
REV.	DESCRIPTION	DATE	APPROVED
A	INITIAL RELEASE	02/01/24	J. Q

D

D

C

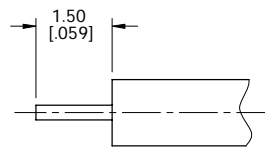
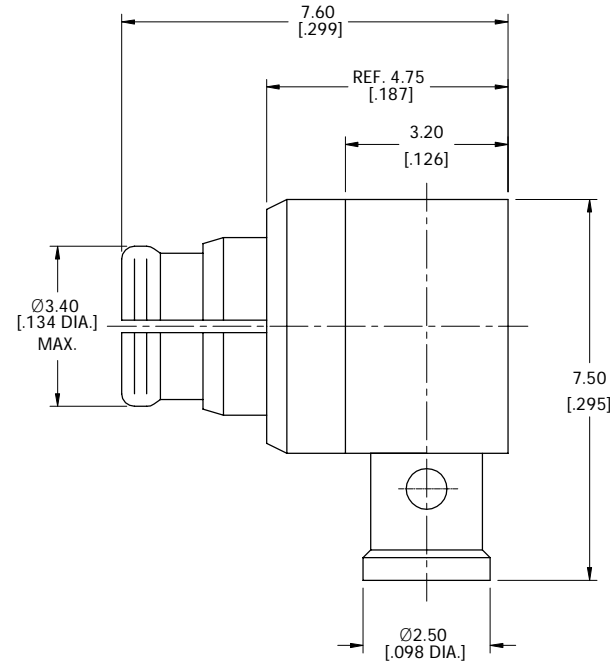
C

B

B

A

A



CABLE STRIPPING DIMENSIONS

DRAWN	X. Y	DATE	02/01/24				
CHECKED	W. Y	DATE	02/01/24				
APPROVED	J. Q	DATE	02/01/24				
UNLESS OTHERWISE SPECIFIED DIMENSIONS ARE IN MILLIMETERS. DIMENSIONS IN [ ] ARE IN INCHES FOR CUSTOMER REFERENCE ONLY UNLESS OTHERWISE SPECIFIED TOLERANCE ARE: .XX ±0.13 [.005"] X ±0.20 [.008"] X ±0.50 [.019"] X° ±1° X° ±2°				THESE DRAWINGS AND SPECIFICATIONS ARE THE PROPERTY OF ANOISON ELECTRONICS LTD AND SHOULD NOT BE USED WITHOUT WRITTEN PERMISSION COPYRIGHT © 2024 ANOISON ELECTRONICS LTD			
TITLE				SMP RIGHT ANGLE FEMALE SOLDER FOR .047 CABLE			
VIEW				PART NO. ANO 9322-2163			
SIZE A3		SCALE 10:1		SHEET 1/1		REV. A	

4

3

2

1