

4

3

2

1

## 1.0 MATERIAL &amp; FINISH

1.1 BODY: BERYLLIUM COPPER ALLOY, GOLD PLATED

1.2 SPRING LATCH: BRASS, GOLD PLATED

1.3 CENTER CONTACT: BERYLLIUM COPPER ALLOY, GOLD PLATED

1.4 INSULATOR: PTFE

1.5 CRIMP FERRULE: COPPER

## 2.0 ENVIRONMENTAL DATA:

2.1 TEMPERATURE RANGE: -55°C~+125°C

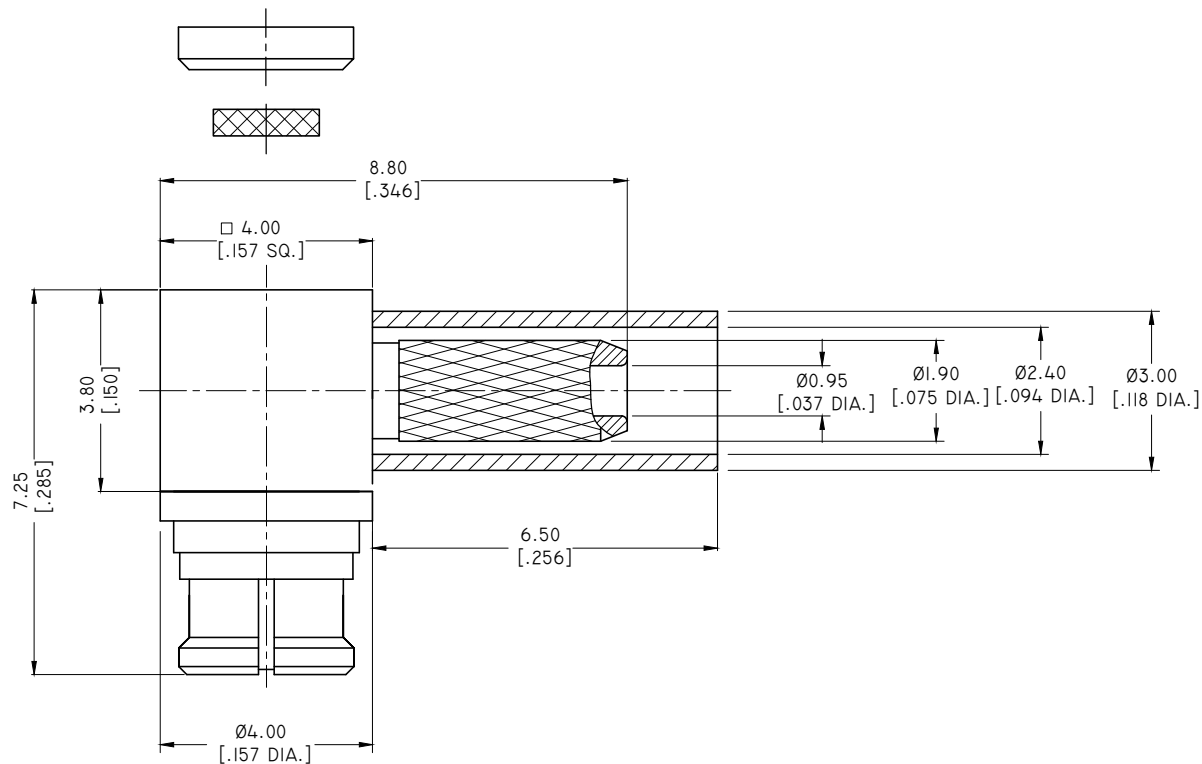
2.2 2011/65/EU (RoHS): COMPLIANT

## 3.0 ELECTRICAL SPECIFICATIONS:

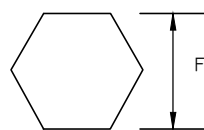
3.1 IMPEDANCE: 50 Ω

3.2 FREQUENCY RANGE: DC~18GHZ

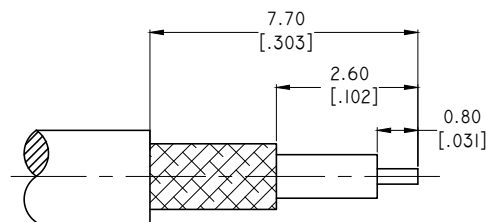
REVISIONS			
REV.	DESCRIPTION	DATE	APPROVED
C	DIMENSION CHANGED	06/14/13	J. QU
D	OUTLINE DRAWING CHANGED	09/22/16	J. QU



## HEX. CRIMP TOOL



FERRULE HEX.  
2.54 [.100]



CABLE STRIPPING DIMENSIONS

DRAWN	L. YANG	DATE	09/22/16
CHECKED	X. B. YANG	DATE	09/22/16
APPROVED	J. QU	DATE	09/22/16
UNLESS OTHERWISE SPECIFIED DIMENSIONS ARE IN MILLIMETERS. DIMENSIONS IN [ ] ARE IN INCHES FOR CUSTOMER REFERENCE ONLY UNLESS OTHERWISE SPECIFIED TOLERANCE ARE:		THESE DRAWINGS AND SPECIFICATIONS ARE THE PROPERTY OF ANOISON ELECTRONICS LTD AND SHOULD NOT BE USED WITHOUT WRITTEN PERMISSION COPYRIGHT © 2016 ANOISON ELECTRONICS LTD	
.XX	±0.13 [.005"]		
.X	±0.20 [.008"]		
X	±0.50 [.019"]		
.X°	±1°		
X°	±2°		



TITLE

SMP RIGHT ANGLE FEMALE CRIMP FOR RG178 CABLE

VIEW



PART NO.

ANO 9322-2021

SIZE  
A3SCALE  
10:1SHEET  
1/1REV.  
D

4

3

2

1