

MATERIAL & FINISH:

- 1 BODY: BRASS, GOLD PLATED
- 2 OUTER CONTACT: BERYLLIUM COPPER ALLOY, GOLD PLATED
- 3 CENTER CONTACT: BERYLLIUM COPPER ALLOY, GOLD PLATED
- 4 INSULATOR: PTFE

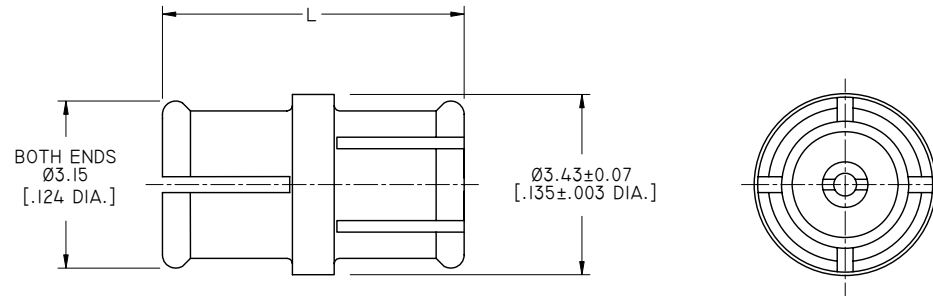
ENVIRONMENTAL DATA:

- 1 TEMPERATURE RANGE: -40°C~+125°C
- 2 2011/65/EU (RoHS): COMPLIANT

ELECTRICAL DATA:

- 1 IMPEDANCE: 50 Ω
- 2 FREQUENCY RANGE: DC~40GHZ
- 3 VSWR: 1.10 MAX. AT DC TO 8GHZ
1.35 MAX. AT 8 TO 26.5GHZ
- 4 INSERTION LOSS: 0.55 DB MAX. AT DC TO 26.5GHZ
- 5 VOLTAGE RATING: 335 V MAX.
- 6 DIELECTRIC WITHSTANDING VOLTAGE: 500 V MIN.
- 7 INSULATION RESISTANCE: 5000 MΩ MIN.

REVISIONS			
REV.	DESCRIPTION	DATE	APPROVED
J	Ø3.43±0.07 [.135±.003 DIA.] WAS Ø3.43 [.135 DIA.]	07/10/17	J. QU
K	2.45 [.098] WAS Ø2.95 [.116]	08/03/17	J. QU
L	PART NO. ANO 932-932-1259 ADDED	08/04/17	J. QU



PART NO.	L
ANO 932-932-1259	6.17 [.243]
ANO 932-932-1264	5.69 [.224]

DRAWN X. B. YANG	DATE 08/03/17					
CHECKED P. CHEN	DATE 08/03/17					
APPROVED J. QU	DATE 08/03/17					
UNLESS OTHERWISE SPECIFIED DIMENSIONS ARE IN MILLIMETERS. DIMENSIONS IN [] ARE IN INCHES FOR CUSTOMER REFERENCE ONLY UNLESS OTHERWISE SPECIFIED TOLERANCE ARE: .XX ±0.13 [.005"] .X ±0.20 [.008"] X ±0.50 [.019"] .X° ±1° X° ±2°		TITLE ADAPTER, SMP FEMALE TO SMP FEMALE				
THESE DRAWINGS AND SPECIFICATIONS ARE THE PROPERTY OF ANOISON ELECTRONICS LTD AND SHOULD NOT BE USED WITHOUT WRITTEN PERMISSION COPYRIGHT © 2017 ANOISON ELECTRONICS LTD		PART NO. ANO 932-932-12XX				
VIEW 		<table border="1"> <tr> <td>SIZE A3</td> <td>SCALE 10:1</td> <td>SHEET 1/1</td> <td>REV. L</td> </tr> </table>	SIZE A3	SCALE 10:1	SHEET 1/1	REV. L
SIZE A3	SCALE 10:1	SHEET 1/1	REV. L			