

4 3 2 1

MATERIAL & FINISH:

- 1 SHOUD AND OUTER CONDUCTOR: STAINLESS STEEL 316L, PASSIVATED
- 2 CENTER CONTACT: BERYLLIUM COPPER ALLOY, GOLD PLATED
- 3 INSULATOR: PTFE

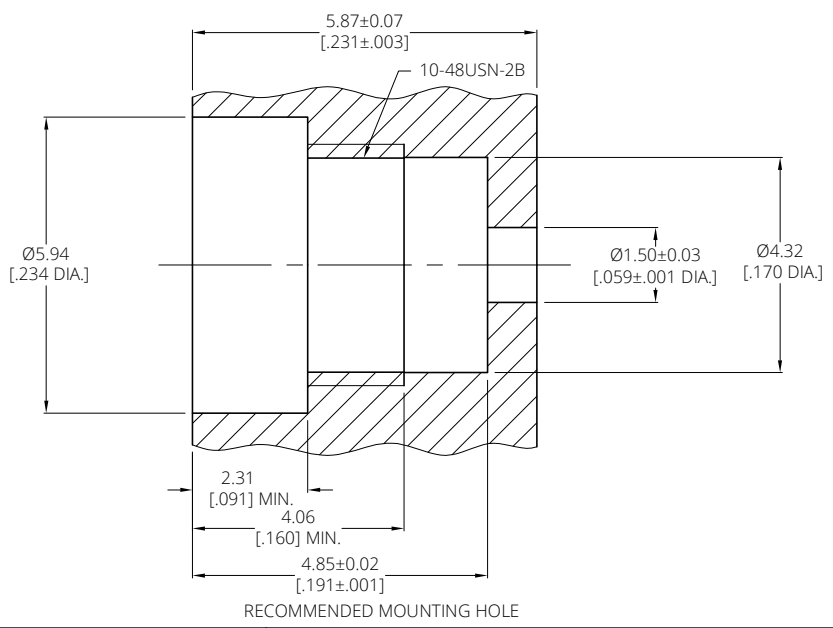
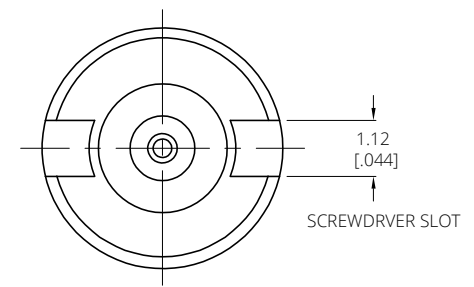
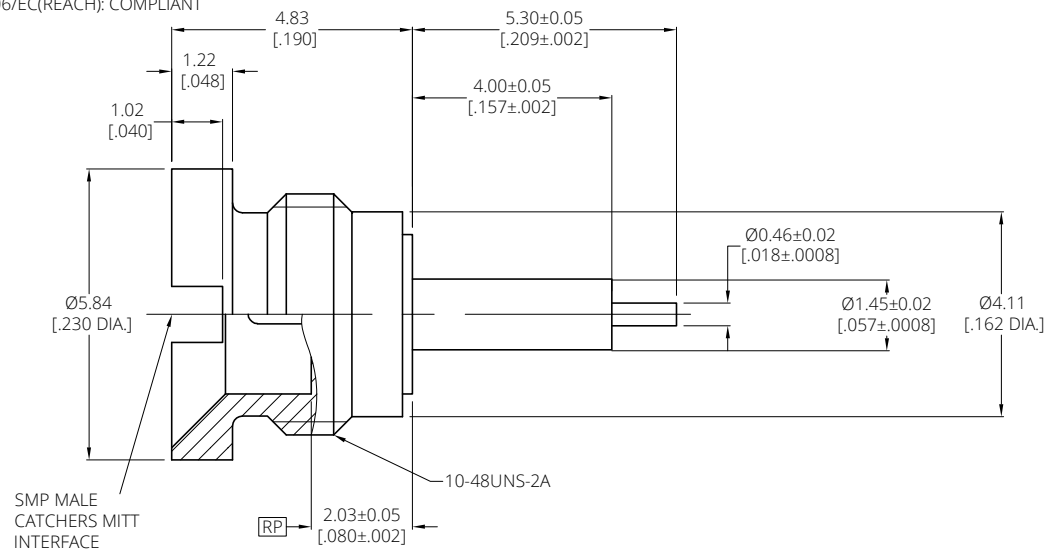
ELECTRICAL DATA:

- 1 IMPEDANCE: 50 OHMS
- 2 FREQUENCY RANGE: DC~18 GHz
- 3 VSWR: 1.30 MAX.
- 4 INSERTION LOSS: .12 X √ F (GHz) dB MAX.

ENVIRONMENTAL DATA:

- 1 TEMPERATURE RANGE: -55°C~+125°C
- 2 2011/65/EU(RoHS) AND 2015/863/(RoHS): COMPLIANT
- 3 1907/2006/EC(REACH): COMPLIANT

REVISIONS			
REV.	DESCRIPTION	DATE	APPROVED
A	INITIAL RELEASE	05/21/24	J. Q



DRAWN	W. Y	DATE	05/21/24
CHECKED	X. Y	DATE	05/21/24
APPROVED	J. Q	DATE	05/21/24
UNLESS OTHERWISE SPECIFIED DIMENSIONS ARE IN MILLIMETERS, DIMENSIONS IN [] ARE IN INCHES FOR CUSTOMER REFERENCE ONLY UNLESS OTHERWISE SPECIFIED TOLERANCE ARE:		THESE DRAWINGS AND SPECIFICATIONS ARE THE PROPERTY OF ANOISON ELECTRONICS LTD AND SHOULD NOT BE USED WITHOUT WRITTEN PERMISSION COPYRIGHT © 2024 ANOISON ELECTRONICS LTD	
XX	±0.13 [005"]		
X	±0.20 [008"]		
X	±0.50 [019"]		
X*	±1°		
X*	±2°		

TITLE: SMP MALE CATCHERS MITT TO STRAIGHT TERMINAL

VIEW:

PART NO. ANO 9311-5166

SIZE	SCALE	SHEET	REV.
A3	4:1	1/1	A

D
C
B
A

4 3 2 1