

**MATERIAL & FINISH:**

- 1 SHOULD AND OUTER CONDUCTOR: STAINLESS STEEL, PASSIVATED
- 2 CENTER CONTACT: BERYLLIUM COPPER ALLOY, GOLD PLATED
- 3 INSULATOR: PTFE

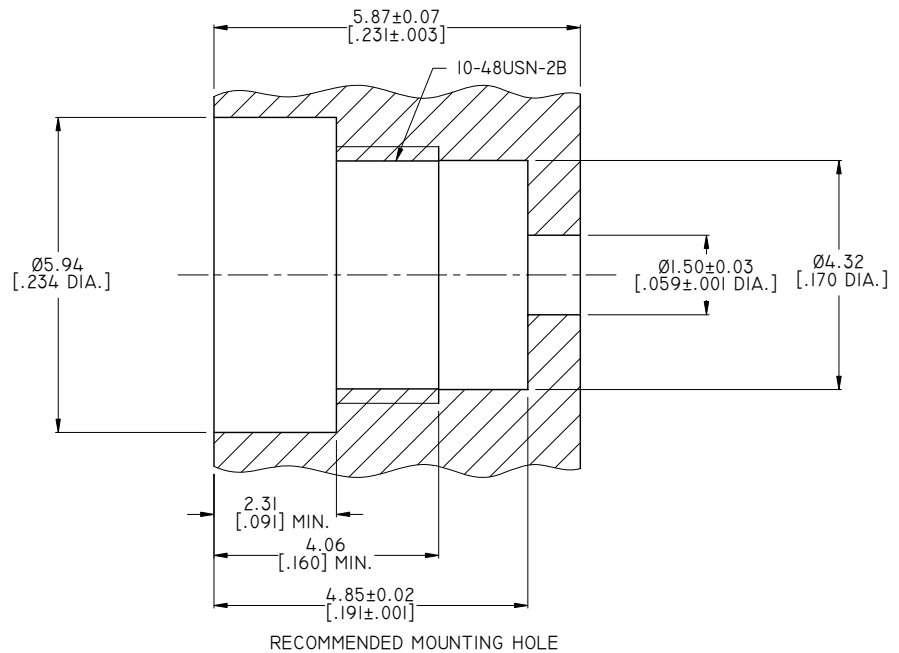
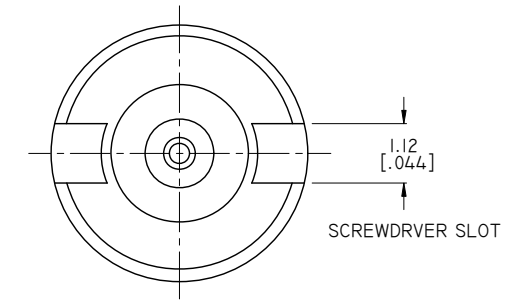
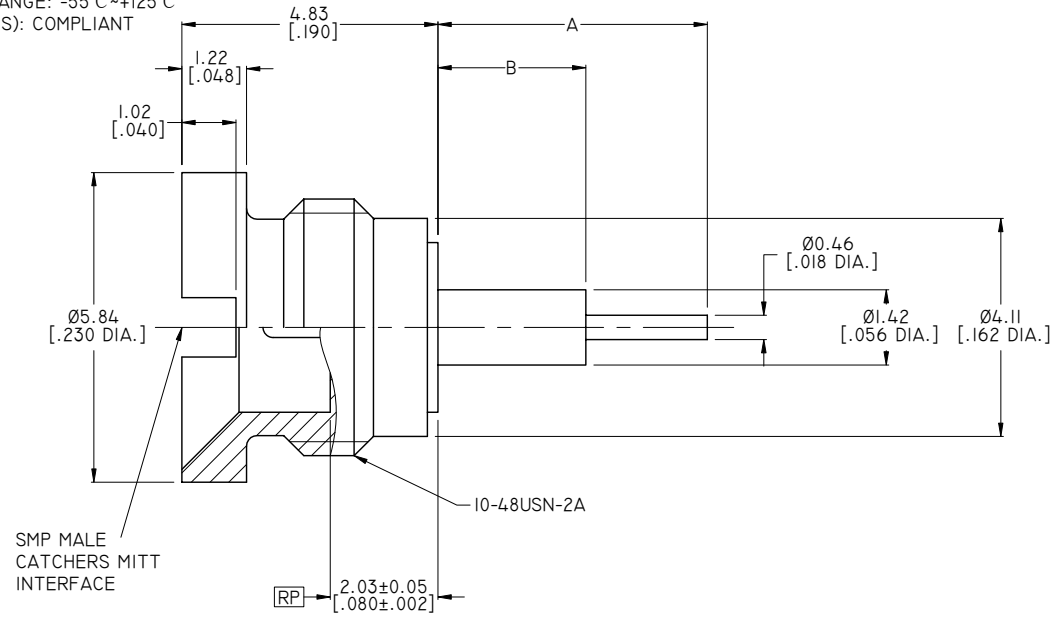
**ELECTRICAL DATA:**

- 1 IMPEDANCE: 50 Ω
- 2 FREQUENCY RANGE: DC~40 GHZ
- 3 VSWR: 1.35 TYP. AT DC~18 GHZ  
1.45 TYP. AT 18~26.5 GHZ

**ENVIRONMENTAL DATA:**

- 1 TEMPERATURE RANGE: -55°C~+125°C
- 2 2011/65/EU (RoHS): COMPLIANT

REVISIONS			
REV.	DESCRIPTION	DATE	APPROVED
A	INITIAL RELEASE	05/26/17	J. QU



PART NO.	A	B
ANO 9311-5074-1	1.70-1.85 [.067-.073]	1.02 [.040]
ANO 9311-5074-2	2.46-2.62 [.097-.103]	1.02 [.040]
ANO 9311-5074-3	5.08 [.200]	2.79 [.110]
ANO 9311-5074-4	8.89 [.350]	6.60 [.260]

DRAWN	W. YANG	DATE	05/26/17
CHECKED	X. B. YANG	DATE	05/26/17
APPROVED	J. QU	DATE	05/26/17
UNLESS OTHERWISE SPECIFIED DIMENSIONS ARE IN MILLIMETERS. DIMENSIONS IN [ ] ARE IN INCHES FOR CUSTOMER REFERENCE ONLY UNLESS OTHERWISE SPECIFIED TOLERANCE ARE:		THESE DRAWINGS AND SPECIFICATIONS ARE THE PROPERTY OF ANOISON ELECTRONICS LTD AND SHOULD NOT BE USED WITHOUT WRITTEN PERMISSION. COPYRIGHT © 2017 ANOISON ELECTRONICS LTD	
.XX	±0.13 [.005"]		
.X	±0.20 [.008"]		
X	±0.50 [.019"]		
.X°	±1°		
X°	±2°		



TITLE				
SMP MALE CATCHERS MITT TO STRAIGHT TERMINAL				
VIEW		PART NO.		
		ANO 9311-5074		
SIZE	SCALE	SHEET	REV.	
A3	10:1	1/1	A	