

**MATERIAL & FINISH:**

- 1 BODY: STAINLESS STEEL, PASSIVATED
- 2 CENTER CONTACT: BERYLLIUM COPPER ALLOY, GOLD PLATED
- 3 INSULATOR: PTFE
- 4 BUSHING: BRASS, NICKEL PLATED

**ENVIRONMENTAL DATA:**

- 1 TEMPERATURE RANGE: -55°C~+125°C
- 2 2011/65/EU (RoHS): COMPLIANT

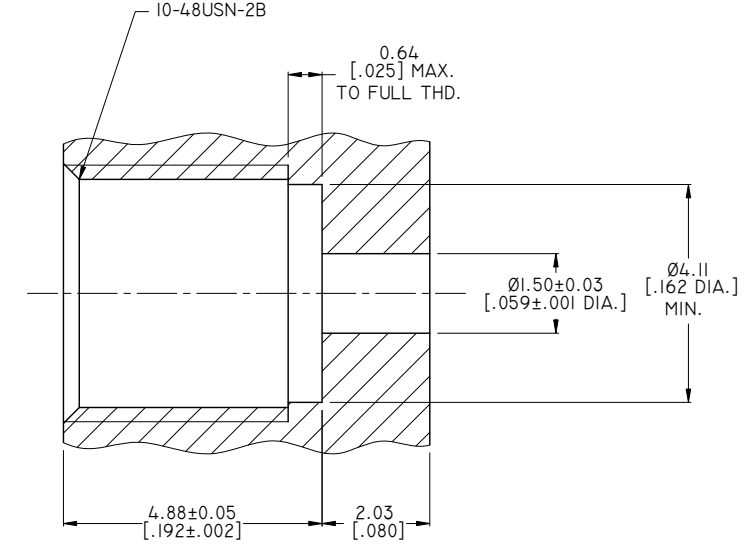
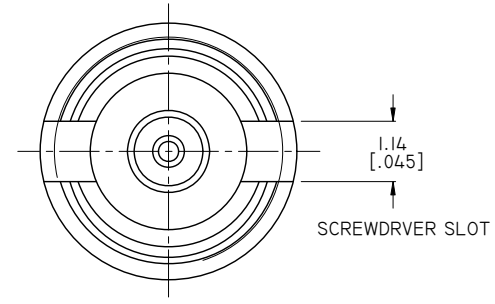
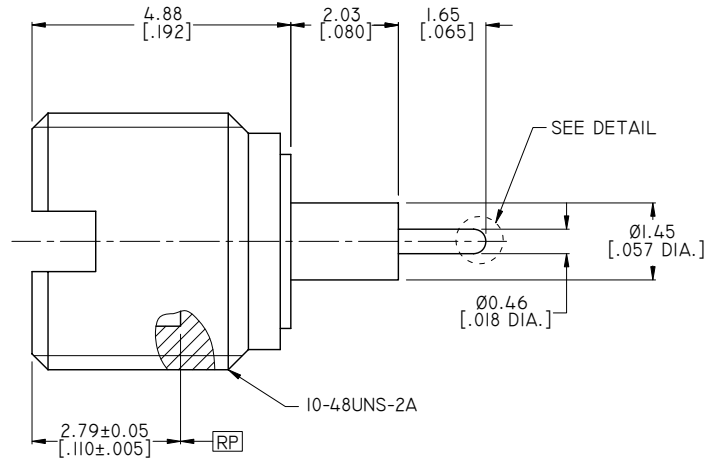
**ELECTRICAL DATA:**

- 1 IMPEDANCE: 50 Ω
- 2 FREQUENCY RANGE: DC~40 GHz
- 3 VSWR: 1.25 TYP. AT DC~18 GHz  
1.35 TYP. AT 18~26.5 GHz  
1.50 TYP. AT 26.5~40 GHz

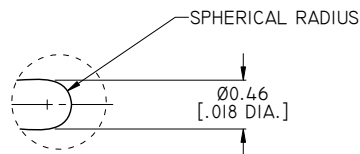
**RECOMMEDEE TORQUE:**

- 1 PANEL NUT: 1 N.M [8.85 IN. LBS]

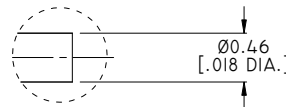
REVISIONS			
REV.	DESCRIPTION	DATE	APPROVED
A	INITIAL RELEASE	04/14/17	J. QU
B	VSWR ADDED	04/26/17	J. QU
C	PART NO. AND DETAIL ADDED	05/15/17	J. QU
D	RECOMMEDEE TORQUE ADDED	08/31/17	J. QU



RECOMMENDED MOUNTING HOLE



SEE DETAIL A



SEE DETAIL B

PART NO.	TYPE	DETAIL
ANO 9311-5069-1	FULL DETENT	A
ANO 9311-5069-2	LIMITED DETENT	
ANO 9311-5069-3	SMOOTH BORE	
ANO 9311-5069-4	FULL DETENT	B
ANO 9311-5069-5	LIMITED DETENT	
ANO 9311-5069-6	SMOOTH BORE	

DRAWN	X. B. YANG	DATE	08/31/17
CHECKED	P. CHEN	DATE	08/31/17
APPROVED	J. QU	DATE	08/31/17
UNLESS OTHERWISE SPECIFIED DIMENSIONS ARE IN MILLIMETERS. DIMENSIONS IN [ ] ARE IN INCHES FOR CUSTOMER REFERENCE ONLY UNLESS OTHERWISE SPECIFIED TOLERANCE ARE:		THESE DRAWINGS AND SPECIFICATIONS ARE THE PROPERTY OF ANOISON ELECTRONICS LTD AND SHOULD NOT BE USED WITHOUT WRITTEN PERMISSION COPYRIGHT © 2017 ANOISON ELECTRONICS LTD	
.XX	±0.13 [0.005"]		
.X	±0.20 [0.008"]		
X	±0.50 [0.019"]		
.X°	±1°		
X°	±2°		



TITLE  
SMP STRAIGHT MALE, THREAD-IN RECEPTACLE

VIEW	PART NO. ANO 9311-5069			
	SIZE A3	SCALE 10:1	SHEET 1/1	REV. D