

MATERIAL & FINISH:

- 1 BODY: BERYLLIUM COPPER ALLOY, GOLD PLATED
- 2 CENTER CONTACT: BERYLLIUM COPPER ALLOY, GOLD PLATED
- 3 SMP CM NUT: STAINLESS STEEL 303, PASSIVATED
- 4 INSULATOR: PTFE

MECHANICAL:

- 1 ENGAGE: 2.0 LBS MAX.
- 2 DISENGAGE: 0.5 LBS MAX.

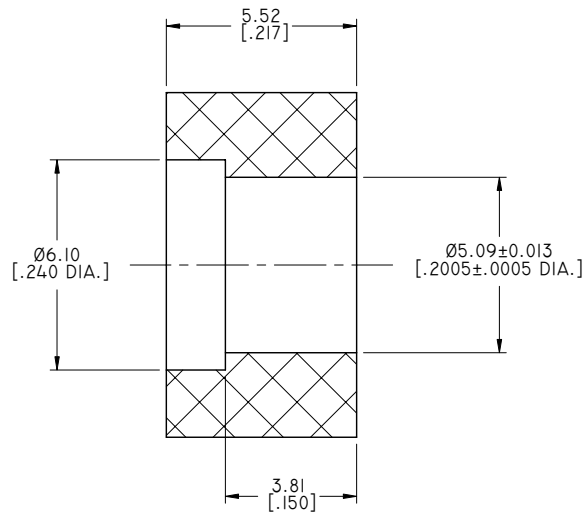
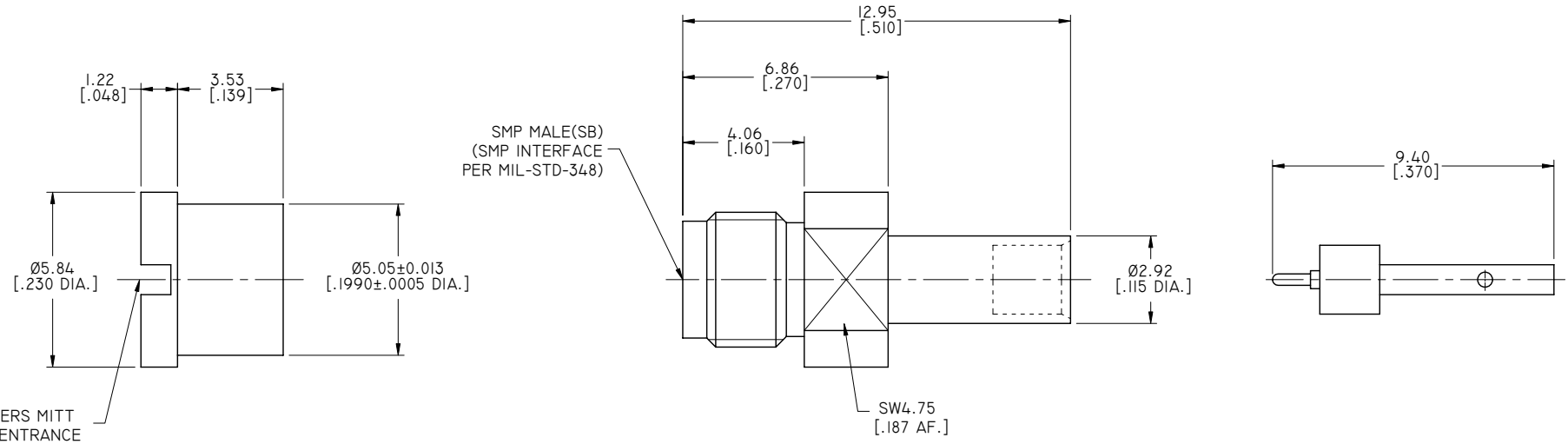
ELECTRICAL DATA:

- 1 IMPEDANCE: 50 Ω
- 2 FREQUENCY RANGE: DC~40 GHz

ENVIRONMENTAL DATA:

- 1 TEMPERATURE RANGE: -55°C~+125°C
- 2 2011/65/EU (RoHS): COMPLIANT

REVISIONS			
REV.	DESCRIPTION	DATE	APPROVED
A	INITIAL RELEASE	09/09/16	J. QU



RECOMMENDED MOUNTING HOLE

DRAWN	X. B. YANG	DATE	09/09/16
CHECKED	L. YANG	DATE	09/09/16
APPROVED	J. QU	DATE	09/09/16
UNLESS OTHERWISE SPECIFIED DIMENSIONS ARE IN MILLIMETERS. DIMENSIONS IN [] ARE IN INCHES FOR CUSTOMER REFERENCE ONLY UNLESS OTHERWISE SPECIFIED TOLERANCE ARE:		THESE DRAWINGS AND SPECIFICATIONS ARE THE PROPERTY OF ANOISON ELECTRONICS LTD AND SHOULD NOT BE USED WITHOUT WRITTEN PERMISSION COPYRIGHT © 2016 ANOISON ELECTRONICS LTD	
.XX	±0.13 [.005"]		
.X	±0.20 [.008"]		
X	±0.50 [.019"]		
.X°	±1°		
X°	±2°		



TITLE
SMP STRAIGHT MALE BULKHEAD SOLDER FOR .086 CABLE

VIEW	PART NO. ANO 9311-5057		
	SIZE A3	SCALE 6.5:1	SHEET 1/1
			REV. A