

MATERIAL & FINISH:

BODY: STAINLESS STEEL, PASSIVATED

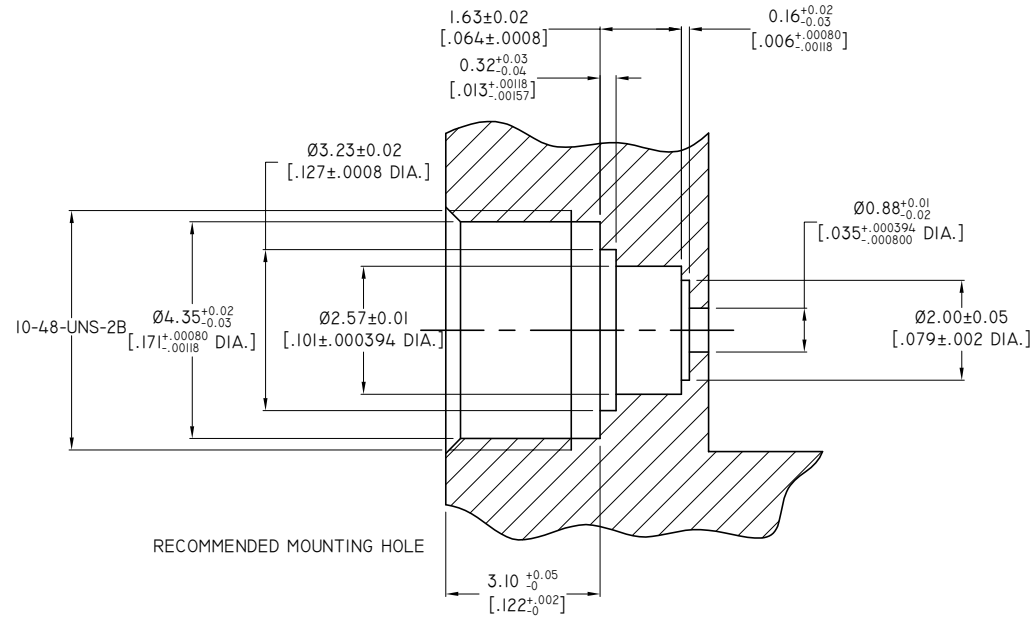
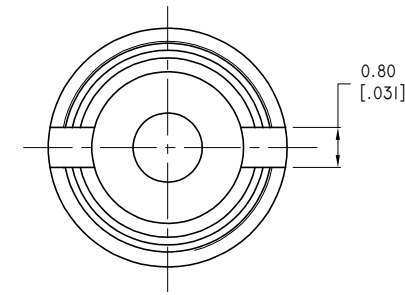
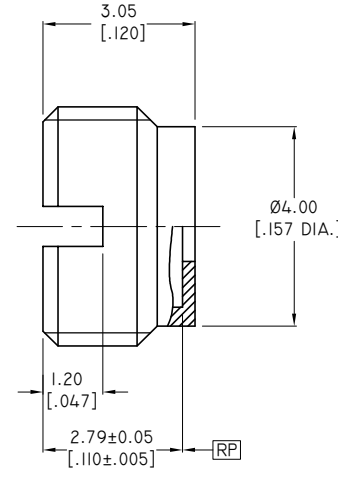
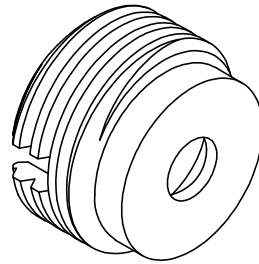
ENVIRONMENTAL DATA:

- 1 TEMPERATURE RANGE: -55°C~+125°C
- 2 2011/65/EU(RoHS) AND 2015/863/(RoHS): COMPLIANT
- 3 1907/2006/EC(REACH): COMPLIANT

RECOMMEDEDE TORQUE:

- 1 PANEL NUT: 90 N.CM

REVISIONS			
REV.	DESCRIPTION	DATE	APPROVED
A	INITIAL RELEASE	03/14/14	J. QU
B	DRAWING CHANGED	08/02/21	J. QU



PART NO.	TYPE	FROCE TO ENGAGE	FROCE TO DISENGAGE
ANO 931I-5032-1	FULL DETENT	68 N MAX.	22 N MIN.
ANO 931I-5032-2	LIMITED DETENT	45 N MAX.	9 N MIN.
ANO 931I-5032-3	SMOOTH BORE	9 N MAX.	2.2 N MIN.

DRAWN	W. YANG	DATE	08/02/21
CHECKED	X. B. YANG	DATE	08/02/21
APPROVED	J. QU	DATE	08/02/21



UNLESS OTHERWISE SPECIFIED DIMENSIONS ARE IN MILLIMETERS, DIMENSIONS IN [] ARE IN INCHES FOR CUSTOMER REFERENCE ONLY UNLESS OTHERWISE SPECIFIED TOLERANCE ARE:

.XX	±0.13 [.005"]
.X	±0.20 [.008"]
X	±0.50 [.019"]
.X*	±1*
X*	±2*

THESE DRAWINGS AND SPECIFICATIONS ARE THE PROPERTY OF ANOISON ELECTRONICS LTD AND SHOULD NOT BE USED WITHOUT WRITTEN PERMISSION COPYRIGHT © 2021 ANOISON ELECTRONICS LTD

TITLE			
SMP STRAIGHT MALE, THREAD-IN SHROUD (FOR USE WITH Ø0.38 CENTER CONDUCTOR)			
VIEW		PART NO.	
		ANO 931I-5032	
SIZE	SCALE	SHEET	REV.
A3	10:1	I/I	B