

4 3 2 1

**MATERIAL & FINISH:**

1. BODY: BRASS, GOLD
2. CENTER CONTACT: BRASS, GOLD PLATED
3. INSULATOR: PEEK

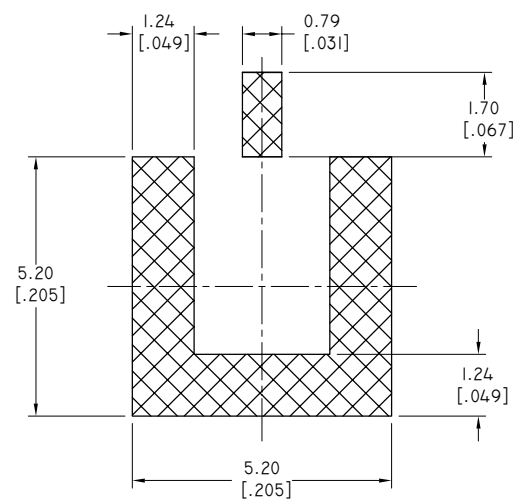
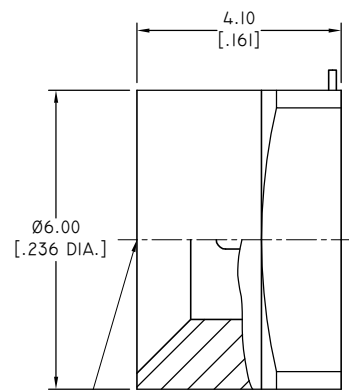
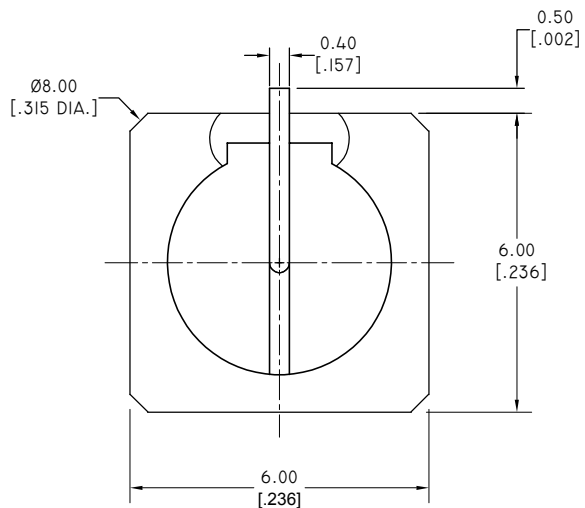
**ENVIRONMENTAL DATA:**

1. TEMPERATURE RANGE: -55°C~+125°C
2. 2011/65/EU (RoHS): COMPLIANT

**ELECTRICAL SPECIFICATIONS:**


1. IMPEDANCE: 50 Ω
2. FREQUENCY RANGE: DC~26.5GHZ
3. VSWR: 1.04 MAX. AT DC~4GHZ  
1.22 MAX. AT 4~18GHZ

REVISIONS			
REV.	DESCRIPTION	DATE	APPROVED
A	INITIAL RELEASE	08/20/21	J. QU



RECOMMENDED PCB FOOTPRINT

DRAWN	W. YANG	DATE	08/20/21
CHECKED	L. YANG	DATE	08/20/21
APPROVED	J. QU	DATE	08/20/21
UNLESS OTHERWISE SPECIFIED DIMENSIONS ARE IN MILLIMETERS, DIMENSIONS IN [ ] ARE IN INCHES FOR CUSTOMER REFERENCE ONLY UNLESS OTHERWISE SPECIFIED TOLERANCE ARE:		THESE DRAWINGS AND SPECIFICATIONS ARE THE PROPERTY OF ANOISON ELECTRONICS LTD AND SHOULD NOT BE USED WITHOUT WRITTEN PERMISSION COPYRIGHT © 2021 ANOISON ELECTRONICS LTD	
.XX	±0.13 [0.005"]		
.X	±0.20 [0.008"]		
X	±0.50 [0.019"]		
X*	±1°		
X*	±2°		



**TITLE**  
SMP STRAIGHT PLUG SMT

**PART NO.**  
ANO 9311-4127

<b>VIEW</b>		<b>SIZE</b>	<b>SCALE</b>	<b>SHEET</b>	<b>REV.</b>
		A3	10:1	1/1	A

D  
C  
B  
A

D  
C  
B  
A

4 3 2 1