

4 3 2 1

**1.0 MATERIAL & FINISH:**

- 1.1 CENTER CONTACT: BERYLLIUM COPPER ALLOY, GOLD PLATED
- 1.2 BODY: STAINLESS STEEL, PASSIVATED
- 1.3 BASE: BRASS, GOLD PLATED
- 1.4 INSULATOR: PTFE

**2.0 ENVIRONMENTAL DATA:**

- 2.1 TEMPERATURE RANGE: -40°C~+125°C
- 2.2 2011/65/EU (RoHS): COMPLIANT

**3.0 ELECTRICAL DATA:**

- 3.1 IMPEDANCE: 50 Ω
- 3.2 FREQUENCY RANGE: DC-40 GHz
- 3.3 VSWR: 1.30 TYP. AT 20 GHz

REVISIONS			
REV.	DESCRIPTION	DATE	APPROVED
D	SCHEDULE CHANGED	10/22/12	J. Q
E	DRAWING FORMAT CHANGED	08/03/17	J. Q
F	1. BODY MATERIAL AND FINISH CHANGED 2. BASE MATERIAL AND FINISH ADDED	01/17/18	J. Q
G	ADDED 2.15 [.085]	02/25/26	J. Q

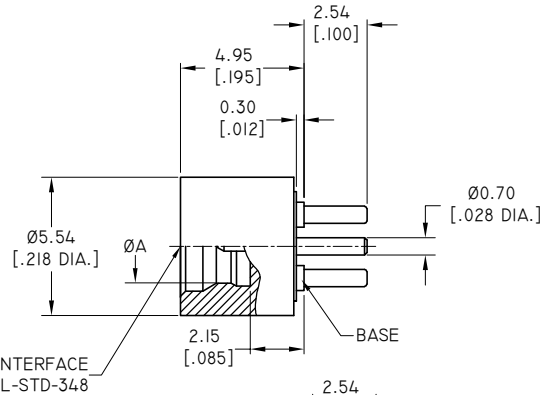
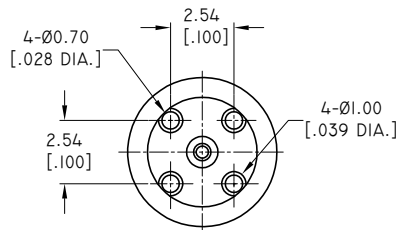
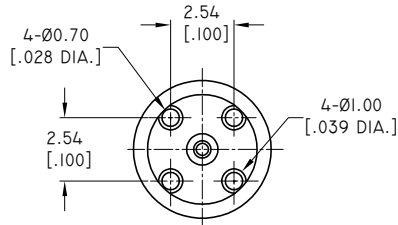


FIGURE 1

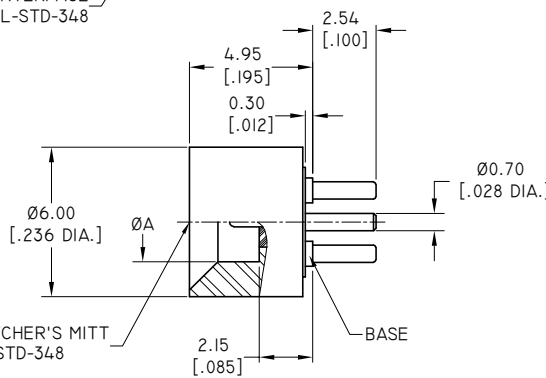
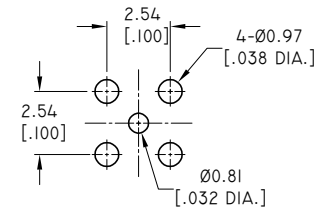


FIGURE 2



RECOMMENDED MOUNTING HOLE

	PART NO.	TYPE	ØA	DURABILITY	FORCE TO ENGAGE	FORCE TO DISENGAGE
FIGURE 1	ANO 9311-4005-1	FULL DETENT	(Ø2.95 [.116 DIA.])	100 CYCLES MIN.	68 N MAX.	22 N MIN.
	ANO 9311-4005-2	LIMITED DETENT	(Ø3.05 [.120 DIA.])	500 CYCLES MIN.	45 N MAX.	9 N MIN.
	ANO 9311-4005-3	SMOOTH BORE	(Ø3.18 [.125 DIA.])	1000 CYCLES MIN.	9 N MAX.	2.2 N MIN.
FIGURE 2	ANO 9311-4005-4	CATCHER'S MITT	(Ø3.25 [.128 DIA.])	1000 CYCLES MIN.	9 N MAX.	2.2 N MIN.

DRAWN	X. Y	DATE	02/25/26
CHECKED	W. Y	DATE	02/25/26
APPROVED	J. Q	DATE	02/25/26
UNLESS OTHERWISE SPECIFIED DIMENSIONS ARE IN MILLIMETERS, DIMENSIONS IN [ ] ARE IN INCHES FOR CUSTOMER REFERENCE ONLY UNLESS OTHERWISE SPECIFIED TOLERANCE ARE:		THESE DRAWINGS AND SPECIFICATIONS ARE THE PROPERTY OF ANOISON ELECTRONICS LTD AND SHOULD NOT BE USED WITHOUT WRITTEN PERMISSION COPYRIGHT © 2026 ANOISON ELECTRONICS LTD	
.XX	±0.13 [.005"]		
.X	±0.20 [.008"]		
X	±0.50 [.019"]		
X°	±1°		
X°	±2°		



TITLE			
SMP STRAIGHT MALE FOR PCB RECEPTACLE			
VIEW	PART NO.		
	ANO 9311-4005		
SIZE	SCALE	SHEET	REV.
A3	5:1	1/1	G

4 3 2 1