

1.0 MATERIAL & FINISH:

1.1 BODY: STAINLESS STEEL, PASSIBATED

1.2 CENTER CONTACT: BERYLLIUM COPPER ALLOY, GOLD PLATED

1.3 INSULATOR: PTFE

2.0 ELECTRICAL DATA:

2.1 IMPEDANCE: 50 Ω

2.2 FREQUENCY RANGE: DC~18GHZ

2.3 VSWR: 1.20 MAX.

2.4 INSERTION LOSS: 0.5 DB MAX.

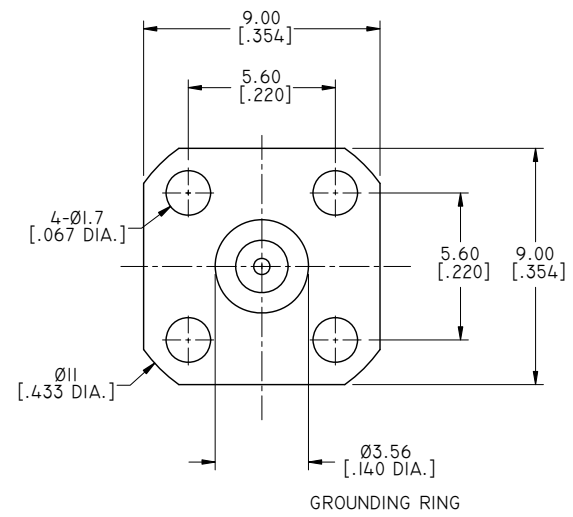
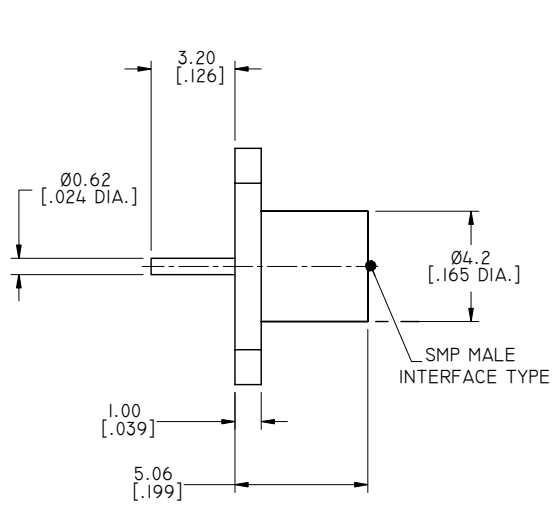
3.0 ENVIRONMENTAL DATA:

3.1 TEMPERATURE RANGE: -55°C~+125°C

3.2 2011/65/EU(RoHS) AND 2015/863/(RoHS): COMPLIANT

3.3 1999/45/EC(REACH): COMPLIANT

REVISIONS			
REV.	DESCRIPTION	DATE	APPROVED
A	INITIAL RELEASE	01/31/19	J. QU
B	9.00 WAS 8.00, Ø0.62 WAS Ø0.3, 3.20 WAS 4.20	02/22/19	J. QU



PART NO.	SMP INTERFACE TYPE
ANO 9311-3105-1	FULL DETENT
ANO 9311-3105-2	LIMITED DETENT
ANO 9311-3105-3	SMOOTH BORE

DRAWN	P. CHEN	DATE	02/22/19
CHECKED	X. B. YANG	DATE	02/22/19
APPROVED	J. QU	DATE	02/22/19
UNLESS OTHERWISE SPECIFIED DIMENSIONS ARE IN MILLIMETERS, DIMENSIONS IN [] ARE IN INCHES FOR CUSTOMER REFERENCE ONLY UNLESS OTHERWISE SPECIFIED TOLERANCE ARE:		THESE DRAWINGS AND SPECIFICATIONS ARE THE PROPERTY OF ANOISON ELECTRONICS LTD AND SHOULD NOT BE USED WITHOUT WRITTEN PERMISSION COPYRIGHT © 2019 ANOISON ELECTRONICS LTD	
.XX	±0.13 [.005"]		
.X	±0.20 [.008"]		
X	±0.50 [.019"]		
.X°	±1°		
X°	±2°		



TITLE			
SMP STRAIGHT MALE 4 HOLE FLANGE PANEL MOUNT RECEPTACLE			
VIEW		PART NO.	
		ANO 9311-3105	
SIZE	SCALE	SHEET	REV.
A3	5:1	I/I	B