

4

3

2

1

1.0 MATERIAL & FINISH:

- 1.1 OUTER CONTACT: STAINLESS STEEL, PASSIVATED
 1.2 CENTER CONTACT: BERYLLIUM COPPER ALLOY, GOLD PLATED
 1.3 BODY: BRASS, GOLD PLATED
 1.4 INSULATOR: PTFE

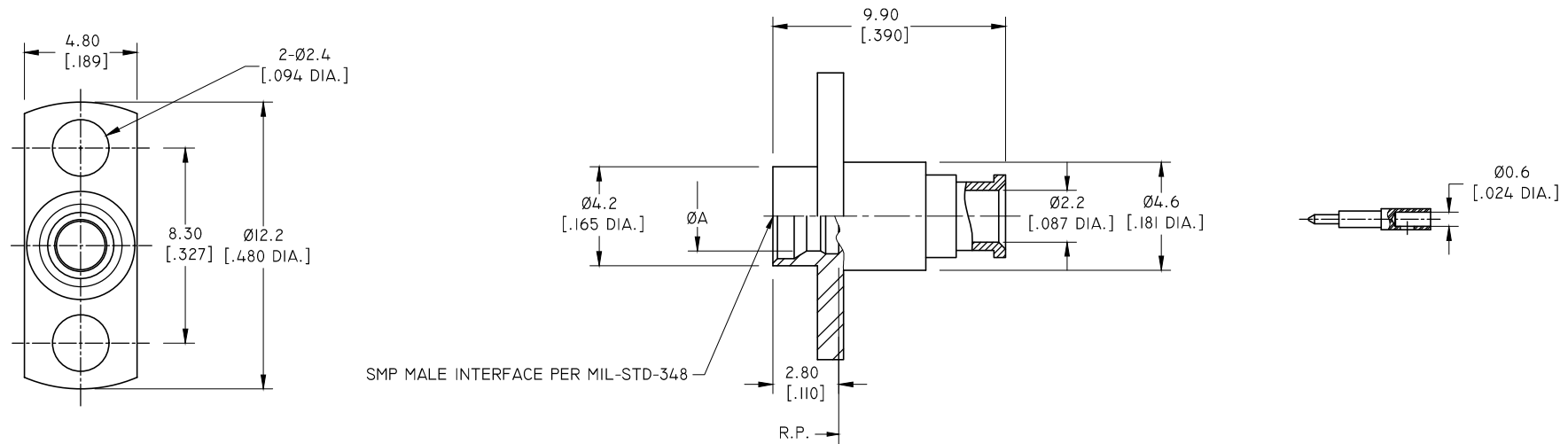
2.0 ENVIRONMENTAL DATA:

- 2.1 TEMPERATURE RANGE: -40°C~+125°C
 2.2 2011/65/EU (RoHS): COMPLIANT

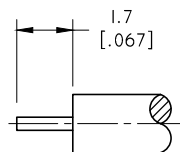
3.0 ELECTRICAL DATA:

- 3.1 IMPEDANCE: 50 Ω
 3.2 FREQUENCY RANGE: DC~40 GHz
 3.3 VSWR: 1.50 MAX.

REVISIONS			
REV.	DESCRIPTION	DATE	APPROVED
A	INITIAL RELEASE	06/06/13	J. QU
B	ADDED SMP MALE INTERFACE	02/03/17	J. QU
C	CHANGED CABLE STRIPPING DIMENSIONS	02/08/17	J. QU
D	CHANGED FREQUENCY RANGE	09/11/19	J. QU



PART NO.	TYPE	ØA
ANO 9311-2013-1	FULL DETENT	(Ø2.95 [.116 DIA.])
ANO 9311-2013-2	LIMITED DETENT	(Ø3.05 [.120 DIA.])
ANO 9311-2013-3	SMOOTH BORE	(Ø3.18 [.125 DIA.])



CABLE STRIPPING DIMENSIONS

DRAWN	W. YANG	DATE	09/11/19
CHECKED	X. B. YANG	DATE	09/11/19
APPROVED	J. QU	DATE	09/11/19
UNLESS OTHERWISE SPECIFIED DIMENSIONS ARE IN MILLIMETERS. DIMENSIONS IN [] ARE IN INCHES FOR CUSTOMER REFERENCE ONLY UNLESS OTHERWISE SPECIFIED TOLERANCE ARE:		THESE DRAWINGS AND SPECIFICATIONS ARE THE PROPERTY OF ANOISON ELECTRONICS LTD AND SHOULD NOT BE USED WITHOUT WRITTEN PERMISSION COPYRIGHT © 2017 ANOISON ELECTRONICS LTD	
.XX	±0.13 [.005"]		
.X	±0.20 [.008"]		
X	±0.50 [.019"]		
.X°	±1°		
X°	±2°		



TITLE			
SMP STRAIGHT 2 HOLE FLANGE MOUNT MALE SOLDER FOR .086 CABLE			
VIEW	PART NO.		
	ANO 9311-2013		
SIZE	SCALE	SHEET	REV.
A3	5:1	1/1	D

4

3

2

1