

4

3

2

1

MATERIAL & FINISH:

- 1 BODY: STAINLESS STEEL, PASSIVATED
- 2 CENTER CONTACT: BERYLLIUM COPPER, GOLD PLATED
- 3 CABLE ADAPTOR: BRASS, GOLD PLATED
- 4 INSULATOR: PTFE
- 5 DIELECTRIC STOP: PTFE

ELECTRICAL DATA:

- 1 IMPEDANCE: 50 Ω
- 2 FREQUENCY RANGE: DC~40 GHZ
- 3 VSWR: 1.25 TYP. AT DC~26.5 GHZ

ENVIRONMENTAL DATA:

- 1 TEMPERATURE RANGE: -55°C~+125°C
- 2 2011/65/EU (RoHS): COMPLIANT

REVISIONS			
REV.	DESCRIPTION	DATE	APPROVED
A	INITIAL RELEASE	03/11/21	J. QU

D

D

C

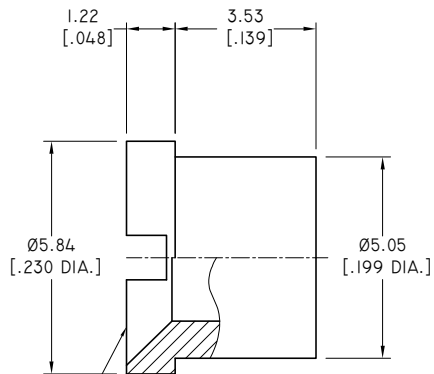
C

B

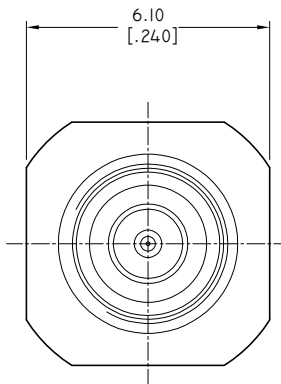
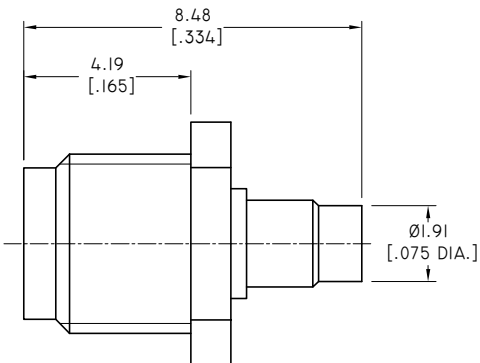
B

A

A



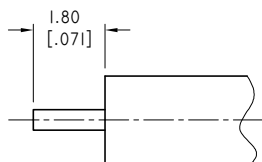
SMP MALE CATCHERS MITT INTERFACE



CENTER CONTACT



DIELECTRIC STOP



CABLE STRIPPING DIMENSIONS

DRAWN	W. YANG	DATE	03/11/21
CHECKED	X. B. YANG	DATE	03/11/21
APPROVED	J. QU	DATE	03/11/21
UNLESS OTHERWISE SPECIFIED DIMENSIONS ARE IN MILLIMETERS, DIMENSIONS IN [] ARE IN INCHES FOR CUSTOMER REFERENCE ONLY UNLESS OTHERWISE SPECIFIED TOLERANCE ARE:		THESE DRAWINGS AND SPECIFICATIONS ARE THE PROPERTY OF ANOISON ELECTRONICS LTD AND SHOULD NOT BE USED WITHOUT WRITTEN PERMISSION COPYRIGHT © 2021 ANOISON ELECTRONICS LTD	
.XX	±0.13 [.005"]		
.X	±0.20 [.008"]		
X	±0.50 [.019"]		
.X°	±1°		
X°	±2°		



TITLE
SMP MALE BULKHEAD MOUNT FOR .047 CABLE, CATCHERS MITT

VIEW	PART NO. ANO 931I-I120		
	SIZE A3	SCALE 8:1	SHEET 1/1
			REV. A

4

3

2

1