

4

3

2

1

## MATERIAL &amp; FINISH:

- 1 BODY: STAINLESS STEEL, PASSIVATED
- 2 CENTER CONTACT: BERYLLIUM COPPER, GOLD PLATED
- 3 CABLE ADAPTOR: BRASS, GOLD PLATED
- 4 INSULATOR: PTFE
- 5 DIELECTRIC STOP: PTFE

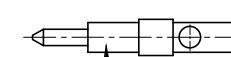
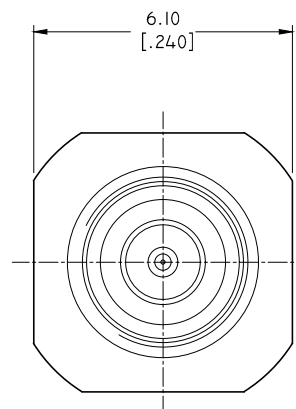
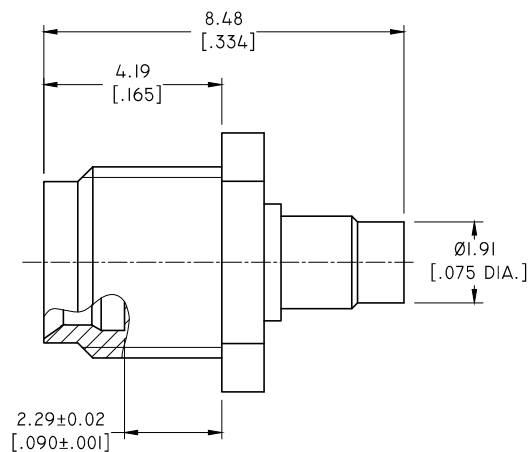
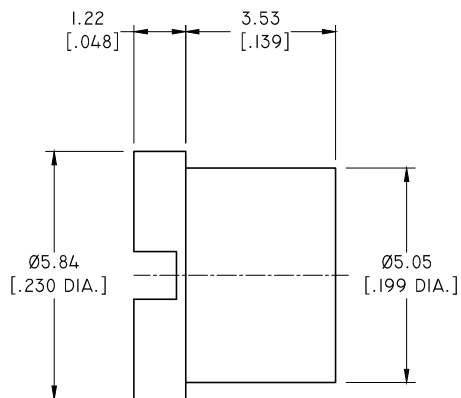
## ELECTRICAL DATA:

- 1 IMPEDANCE: 50  $\Omega$
- 2 FREQUENCY RANGE: DC-40 GHZ
- 3 VSWR: 1.25 TYP. AT DC-26.5 GHZ

## ENVIRONMENTAL DATA:

- 1 TEMPERATURE RANGE: -55°C~+125°C
- 2 2011/65/EU (RoHS): COMPLIANT

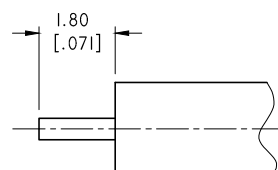
REVISIONS			
REV.	DESCRIPTION	DATE	APPROVED
A	INITIAL RELEASE	07/24/18	J. QU



CENTER CONTACT



DIELECTRIC STOP





CABLE STRIPPING DIMENSIONS

PART NO.	TYPE
ANO 9311-I094	FULL DETENT
ANO 9311-I094-1	LIMITED DETENT
ANO 9311-I094-2	SMOOTH BORE

DRAWN	W. YANG	DATE	07/24/18
CHECKED	X. B. YANG	DATE	07/24/18
APPROVED	J. QU	DATE	07/24/18
UNLESS OTHERWISE SPECIFIED DIMENSIONS ARE IN MILLIMETERS, DIMENSIONS IN [ ] ARE IN INCHES FOR CUSTOMER REFERENCE ONLY UNLESS OTHERWISE SPECIFIED TOLERANCE ARE:		THESE DRAWINGS AND SPECIFICATIONS ARE THE PROPERTY OF ANOISON ELECTRONICS LTD AND SHOULD NOT BE USED WITHOUT WRITTEN PERMISSION COPYRIGHT © 2018 ANOISON ELECTRONICS LTD	
.XX	+0.13 [.005"]		
.X	+0.20 [.008"]		
X	+0.50 [.019"]		
.X°	±1°		
X°	±2°		



TITLE  
SMP MALE BULKHEAD MOUNT FOR .047 CABLE

VIEW	PART NO. ANO 9311-I094		
 	SIZE A3	SCALE 8:1	SHEET 1/1
	REV. A		