

4 3 2 1

MATERIAL & FINISH:

- 1 BODY: STAINLESS STEEL, PASSIVATED
- 2 CENTER CONTACT: BERYLLIUM COPPER ALLOY, GOLD PLATED
- 3 INSULATOR: PTFE

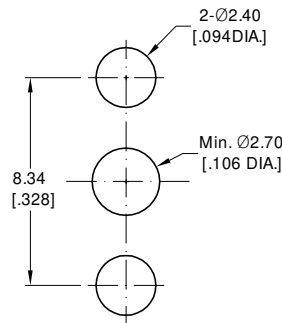
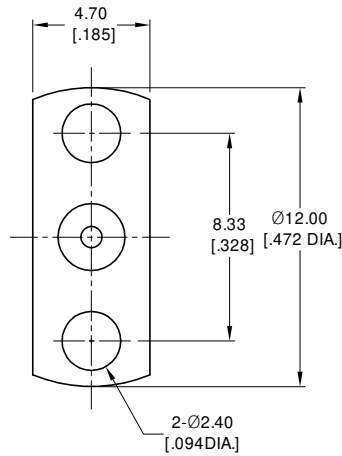
ELECTRICAL DATA:

- 1 IMPEDANCE: 50 Ω
- 2 FREQUENCY RANGE: DC~26 GHz

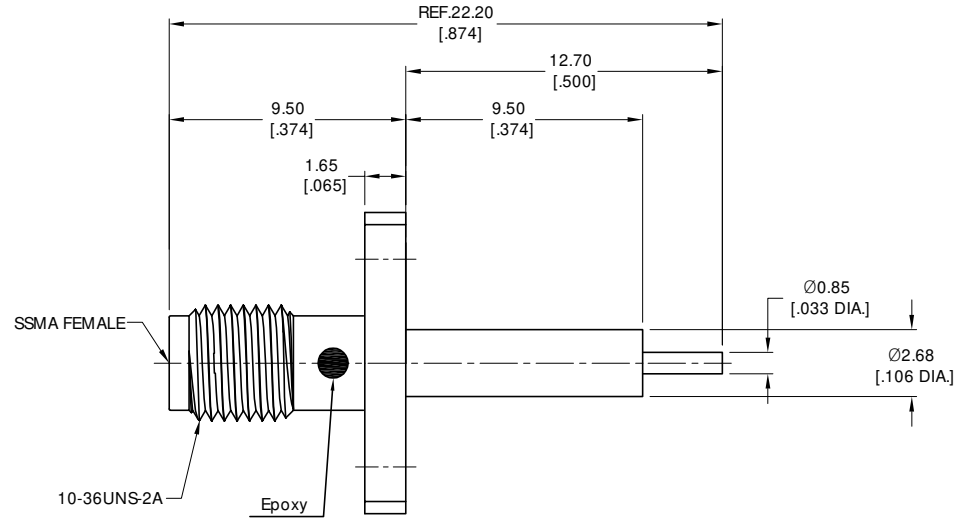
REVISIONS			
REV.	DESCRIPTION	DATE	APPROVED
A	INITIAL RELEASE	10/28/24	J Q

ENVIRONMENTAL DATA:

- 1 TEMPERATURE RANGE: -65 °C ~ +125 °C
- 2 2011/65/EU (RoHS) AND 2015/863/(RoHS): COMPLIANT
- 3 1999/2006/EC (REACH): COMPLIANT



Recommended Mounting Hole



DRAWN	P. C	DATE	10/28/24
CHECKED	W. Y	DATE	10/28/24
APPROVED	J Q	DATE	10/28/24
UNLESS OTHERWISE SPECIFIED DIMENSIONS ARE IN MILLIMETERS, DIMENSIONS IN [] ARE IN INCHES FOR CUSTOMER REFERENCE ONLY UNLESS OTHERWISE SPECIFIED TOLERANCE ARE:		THESE DRAWINGS AND SPECIFICATIONS ARE THE PROPERTY OF ANOISON ELECTRONICS LTD AND SHOULD NOT BE USED WITHOUT WRITTEN PERMISSION COPYRIGHT © 2024 ANOISON ELECTRONICS LTD	
XX	±0.13 [.005"]		
X	±0.20 [.008"]		
x	±0.50 [.019"]		
.X	±1°		
.X°	±2°		



TITLE			
SSMA STRAIGHT FEMALE(JACK) RECEPTACLE, 2 HOLE FLANGE MOUNT			
VIEW		PART NO.	
		ANO 9112-3005	

SIZE	SCALE	SHEET	REV.
A3	5:1	1/1	A

4 3 2 1