

4

3

2

1

**MATERIAL & FINISH:**

- 1 BODY: BERYLLIUM COPPER ALLOY, GOLD PLATED
- 2 CENTER CONTACT: BERYLLIUM COPPER ALLOY, GOLD PLATED
- 3 INSULATOR: PTFE

**ELECTRICAL DATA:**

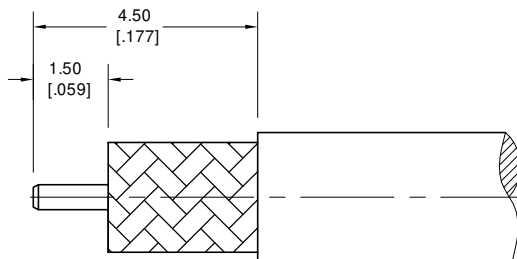
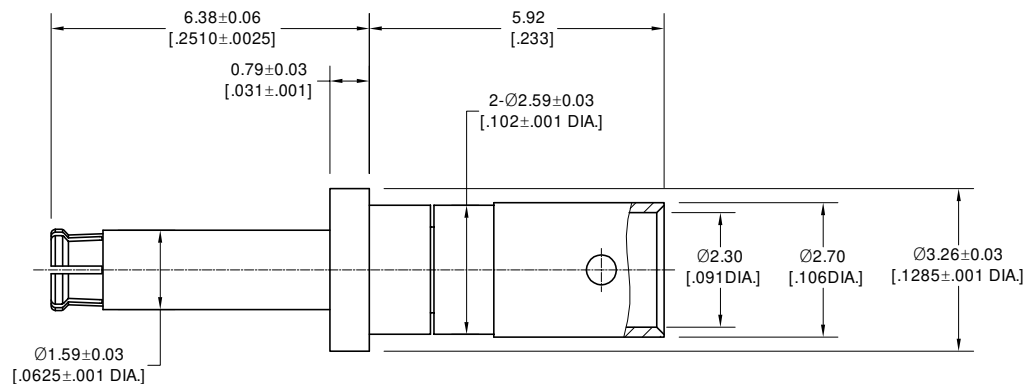
- 1 IMPEDANCE: 50 Ω
- 2 FREQUENCY RANGE: DC~65 GHz

**ENVIRONMENTAL DATA:**

- 1 TEMPERATURE RANGE: -55 °C~+165 °C
- 2 2011/65/EU(RoHS) AND 2015/863/(RoHS): COMPLIANT
- 3 1999/45/EC(REACH): COMPLIANT

REVISIONS

REV.	DESCRIPTION	DATE	APPROVED
A	INITIAL RELEASE	05/09/23	J Q
B	6.38±0.06 WAS 5.29±0.06	10/12/23	J Q



CABLE STRIPPING DIMENSIONS

DRAWN	P. C	DATE	10/12/23
CHECKED	X. Y	DATE	10/12/23
APPROVED	J Q	DATE	10/12/23
UNLESS OTHERWISE SPECIFIED DIMENSIONS ARE IN MILLIMETERS, DIMENSIONS IN [ ] ARE IN INCHES FOR CUSTOMER REFERENCE ONLY UNLESS OTHERWISE SPECIFIED TOLERANCE ARE:		THESE DRAWINGS AND SPECIFICATIONS ARE THE PROPERTY OF ANOISON ELECTRONICS LTD AND SHOULD NOT BE USED WITHOUT WRITTEN PERMISSION COPYRIGHT © 2023 ANOISON ELECTRONICS LTD	
	XX	±0.13	[.005"]
	.X	±0.20	[.008"]
	X	±0.50	[.019"]
	.X°	±1°	
	X°	±2°	



TITLE  
**SMPS FEMALE SOLDER FOR .086 CABLE, BLIND-MATE FOR M38999 SIZE 16 CAVITY**

VIEW	PART NO. ANO 7812-2011	SIZE A3	SCALE 10:1	SHEET 1/1	REV. B
------	---------------------------	------------	---------------	--------------	-----------

4

3

2

1