

4 3 2 1

MATERIAL & FINISH:

- 1 BODY: BERYLLIUM COPPER ALLOY, GOLD PLATED
- 2 CENTER CONTACT: BERYLLIUM COPPER ALLOY, GOLD PLATED
- 3 INSULATOR: PTFE

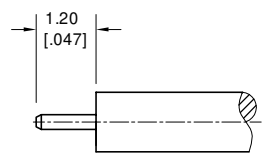
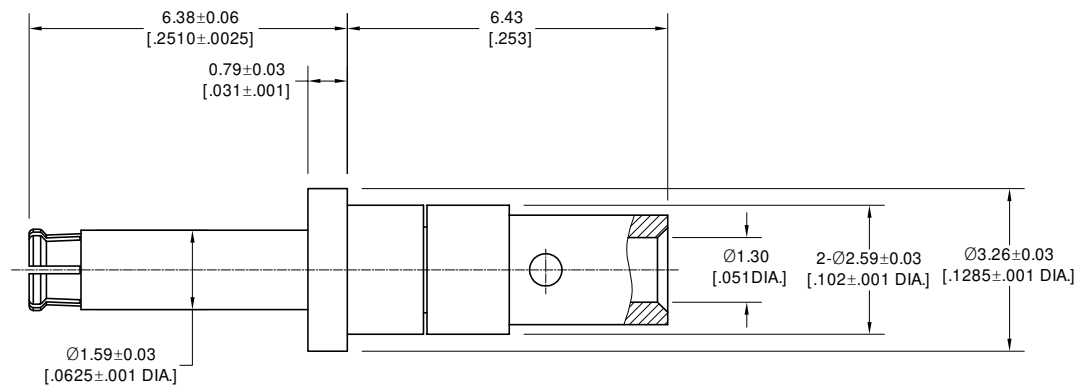
ELECTRICAL DATA:

- 1 IMPEDANCE: 50 Ω
- 2 FREQUENCY RANGE: DC-65 GHz

ENVIRONMENTAL DATA:


- 1 TEMPERATURE RANGE: -55 °C ~ +165 °C
- 2 2011/65/EU (RoHS) AND 2015/863/(RoHS): COMPLIANT
- 3 1999/45/EC (REACH): COMPLIANT

REVISIONS			
REV.	DESCRIPTION	DATE	APPROVED
A	INITIAL RELEASE	09/20/22	J Q

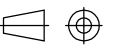


CABLE STRIPPING DIMENSIONS

DRAWN	P. C	DATE	09/20/22
CHECKED	X. Y	DATE	09/20/22
APPROVED	J Q	DATE	09/20/22
UNLESS OTHERWISE SPECIFIED DIMENSIONS ARE IN MILLIMETERS, DIMENSIONS IN [] ARE IN INCHES FOR CUSTOMER REFERENCE ONLY UNLESS OTHERWISE SPECIFIED TOLERANCE ARE:		THESE DRAWINGS AND SPECIFICATIONS ARE THE PROPERTY OF ANOISON ELECTRONICS LTD AND SHOULD NOT BE USED WITHOUT WRITTEN PERMISSION COPYRIGHT © 2022 ANOISON ELECTRONICS LTD	
XX	±0.13 [.005"]		
.X	±0.20 [.008"]		
X	±0.50 [.019"]		
.X°	±1°		
X°	±2°		



TITLE
SMPS FEMALE SOLDER FOR .047 CABLE, BLIND-MATE FOR M38999 SIZE 16 CAVITY

VIEW 

PART NO. ANO 7812-2004			
SIZE A3	SCALE 10:1	SHEET 1/1	REV. A

D
C
B
A

D
C
B
A

4 3 2 1