

**MATERIAL & FINISH:**

- 1 BODY: BERYLLIUM COPPER ALLOY, GOLD PLATED
- 2 CENTER CONTACT: BERYLLIUM COPPER ALLOY, GOLD PLATED
- 3 SHROUD: BERYLLIUM COPPER ALLOY, GOLD PLATED
- 4 SLEEVE: STAINLESS STEEL, PASSIVATED
- 5 INSULATOR: PTFE

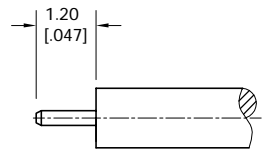
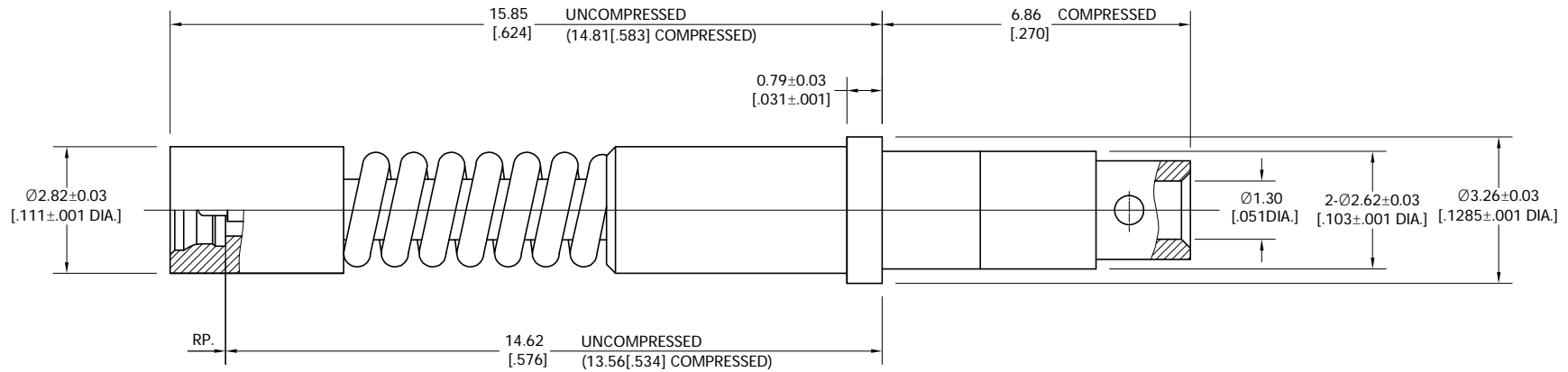
**ELECTRICAL DATA:**

- 1 IMPEDANCE: 50 Ω
- 2 FREQUENCY RANGE: DC-65 GHz
- 3 VSWR: 1.35 MAX.

**ENVIRONMENTAL DATA:**

- 1 TEMPERATURE RANGE: -55°C~+165°C
- 2 2011/65/EU(RoHS) AND 2015/863/(RoHS): COMPLIANT
- 3 1999/45/EC(REACH): COMPLIANT

REVISIONS			
REV.	DESCRIPTION	DATE	APPROVED
A	INITIAL RELEASE	09/20/22	J. Q



CABLE STRIPPING DIMENSIONS

DRAWN	P. C	DATE	09/20/22
CHECKED	X. Y	DATE	09/20/22
APPROVED	J. Q	DATE	09/20/22

UNLESS OTHERWISE SPECIFIED DIMENSIONS ARE IN MILLIMETERS, DIMENSIONS IN [ ] ARE IN INCHES FOR CUSTOMER REFERENCE ONLY UNLESS OTHERWISE SPECIFIED TOLERANCE ARE:

XX	±0.13 [0.005"]
X	±0.20 [0.008"]
x	±0.50 [0.019"]
X*	±1°
x*	±2°

THESE DRAWINGS AND SPECIFICATIONS ARE THE PROPERTY OF ANOISON ELECTRONICS LTD AND SHOULD NOT BE USED WITHOUT WRITTEN PERMISSION COPYRIGHT © 2022 ANOISON ELECTRONICS LTD



TITLE  
SMPS MALE SOLDER FOR .047 CABLE, BLIND-MATE FOR M38999 SIZE 16 CAVITY

VIEW	PART NO. ANO 7811-2005
SIZE A3	SCALE 10:1
SHEET 1/1	REV. A