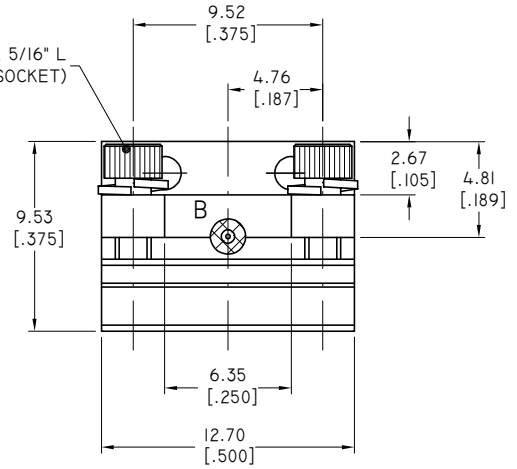
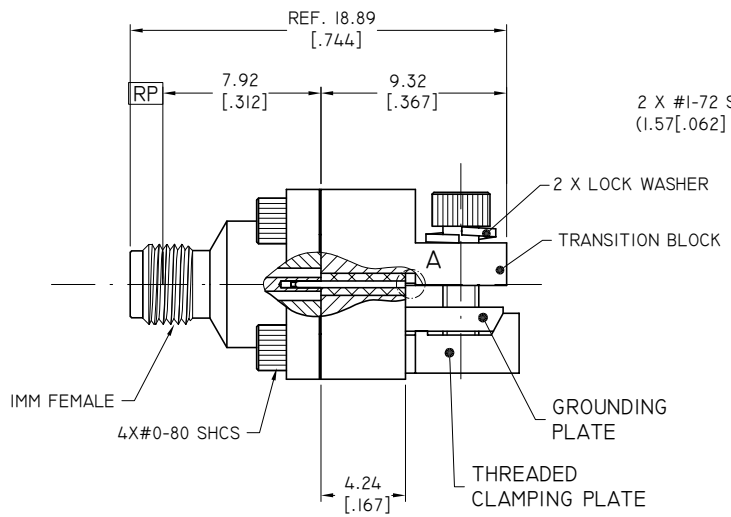
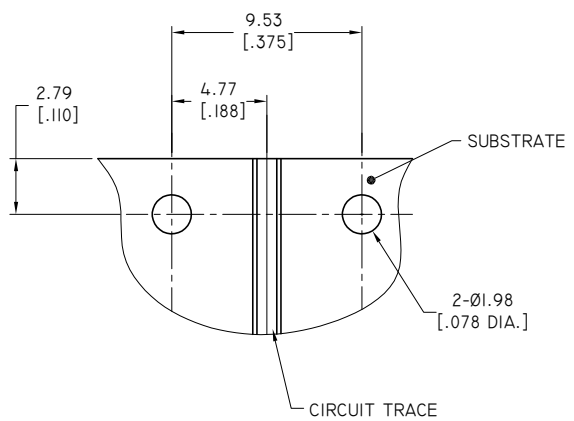


| REVISIONS |                 |          |          |
|-----------|-----------------|----------|----------|
| REV.      | DESCRIPTION     | DATE     | APPROVED |
| A         | INITIAL RELEASE | 03/12/20 | J. QU    |



**IMM CONNECTOR**

1. BODY: STAINLESS STEEL, PASSIVATED
2. CENTER CONTACT: BERYLLIUM COPPER ALLOY, GOLD PLATED
3. INSULATOR: PEI

**TRANSITION BLOCK**

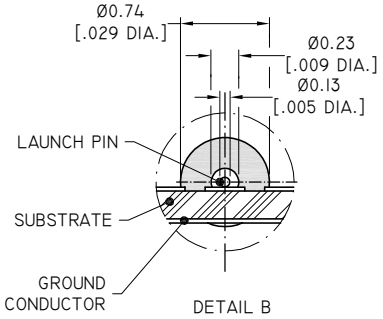
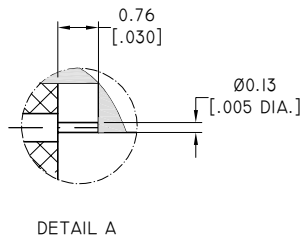
1. TRANSITION BLOCK: BRASS, NICKEL PLATED
2. GROUNDING PLATE: BRASS, NICKEL PLATED
3. THREADED CLAMPING PLATE: BRASS, NICKEL PLATED
4. LAUNCH PIN: BERYLLIUM COPPER ALLOY, GOLD PLATED
5. TRANSITION BLOCK DIELECTRIC: PTFE

**ENVIRONMENTAL DATA:**

1. TEMPERATURE RANGE: -55°C~+125°C
2. 2011/65/EU (RoHS): COMPLIANT

**ELECTRICAL SPECIFICATIONS:**

1. IMPEDANCE: 50 Ω
2. FREQUENCY RANGE: DC~110GHZ



|   |               |  |          |
|---|---------------|--|----------|
| DRAWN   | W. YANG       | DATE   | 03/12/20 |
| CHECKED   | L. YANG       | DATE   | 03/12/20 |
| APPROVED  | J. QU         | DATE   | 03/12/20 |
| UNLESS OTHERWISE SPECIFIED DIMENSIONS ARE IN MILLIMETERS, DIMENSIONS IN [ ] ARE IN INCHES FOR CUSTOMER REFERENCE ONLY UNLESS OTHERWISE SPECIFIED TOLERANCE ARE: |               | THESE DRAWINGS AND SPECIFICATIONS ARE THE PROPERTY OF ANOISON ELECTRONICS LTD AND SHOULD NOT BE USED WITHOUT WRITTEN PERMISSION COPYRIGHT © 2020 ANOISON ELECTRONICS LTD |          |
| .XX   | ±0.13 [.005"] |  |          |
| .X  | ±0.20 [.008"] |  |          |
| X   | ±0.50 [.019"] |  |          |
| X°  | ±1°           |  |          |
| X"  | ±2°           |  |          |

**ANOISON**

TITLE: IMM FEMALE END LAUNCH CONNECTOR LOW PROFILE

VIEW:

PART NO. ANO 762-AI-L

|      |       |       |      |
|------|-------|-------|------|
| SIZE | SCALE | SHEET | REV. |
| A3   | 4:1   | 1/1   | A    |