

**MATERIAL & FINISH**

- 1 BODY: BRASS, ALBALOY PLATED
- 2 CENTER CONTACT: PHOSPHOR BRONZE, SILVER PLATED
- 3 COUPLING NUT: BRASS, ALBALOY PLATED
- 4 INSULATOR: PTFE
- 5 RESISTANCE: BERYLLIUM OXIDE
- 6 RADIATOR: ALUMINIUM, BLACK
- 7 GASKTE: SILICONE RUBBER

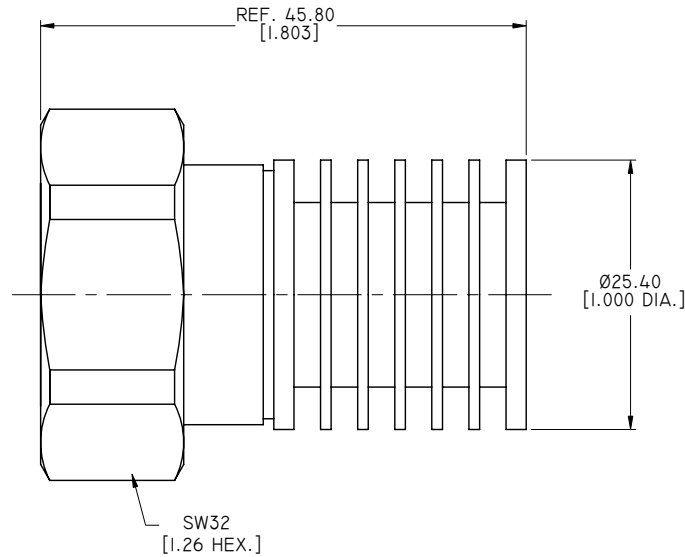
**ENVIRONMENTAL DATA:**

- 1 OPERATING TEMPERATURE RANGE: -55°C~+125°C
- 2 STORAGE TEMPERATURE RANGE: -55°C~+125°C
- 3 2011/65/EU(RoHS) AND 2015/863/(RoHS): COMPLIANT
- 4 1999/45/EC(REACH): COMPLIANT

**ELECTRICAL DATA:**

- 1 IMPEDANCE: 50 OHMS
- 2 FREQUENCY RANGE: DC~7.5 GHZ
- 3 VSWR: 1.15 MAX. AT DC~3 GHZ  
1.25 MAX. AT 3~7.5 GHZ
- 4 AVERAGE POWER: 10 WATT AVERAGE TO 25°C AMBIENT TEMPERATRU, DERATED LINEARLY TO 1 W @ 125°C
- 5 PEAK POWER: 500 W (5μS PLUSE WIDTH WITH 2% DUTY CYCLE)

REVISIONS			
REV.	DESCRIPTION	DATE	APPROVED
A	INITIAL RELEASE	07/13/12	J. QU
B	DRAWING FORMAT CHANGED	10/08/18	J. QU



**NOTES:**

- 1 ALL SPECIFICATIONS ARE SUBJECT TO CHANGE WITHOUT NOTICE AT ANY TIME.
- 2 CUSTOMER OUTLINE DRAWING FOR REFERENCE ONLY.

DRAWN	X. B. YANG	DATE	10/08/18
CHECKED	W. YANG	DATE	10/08/18
APPROVED	J. QU	DATE	10/08/18
UNLESS OTHERWISE SPECIFIED DIMENSIONS ARE IN MILLINETERS, DIMENSIONS IN [ ] ARE IN INCHES FOR CUSTOMER REFERENCE ONLY UNLESS OTHERWISE SPECIFIED TOLERANCE ARE:		THESE DRAWINGS AND SPECIFICATIONS ARE THE PROPERTY OF ANOISON ELECTRONICS LTD AND SHOULD NOT BE USED WITHOUT WRITTEN PERMISSION COPYRIGHT © 2018 ANOISON ELECTRONICS LTD	
.XX	±0.13 [ .005" ]		
.X	±0.20 [ .008" ]		
X	±0.50 [ .019" ]		
.X°	±1°		
X°	±2°		



TITLE			
COAXIAL TERMINATION 7/16 MALE, 10 WATTS, DC~7.5GHZ			
VIEW		PART NO.	
		ANO 756-102	
SIZE	SCALE	SHEET	REV.
A3	2.5:1	1/1	B