

4

3

2

1

MATERIAL & FINISH:

- 1 BODY: BRASS, ALBALOY PLATED
- 2 COUPLING NUT: BRASS, ALBALOY PLATED
- 3 CENTER CONTACT: PHOSPHOR BRONZE, SILVER PLATED
- 4 INSULATOR: PTFE
- 5 O-RING: SILICONE RUBBER

MECHANICAL DATA:

- 1 MECHANICAL DURABILITY: 100 CYCLES MIN.
- 2 RECOMMENDED TORQUE: 1.5 NM (MAXIUM 5 NM)

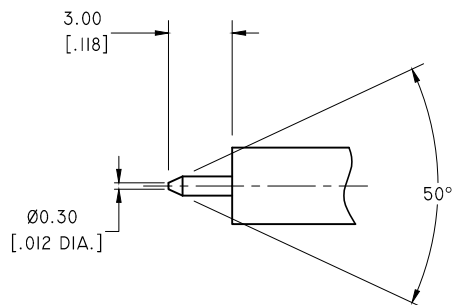
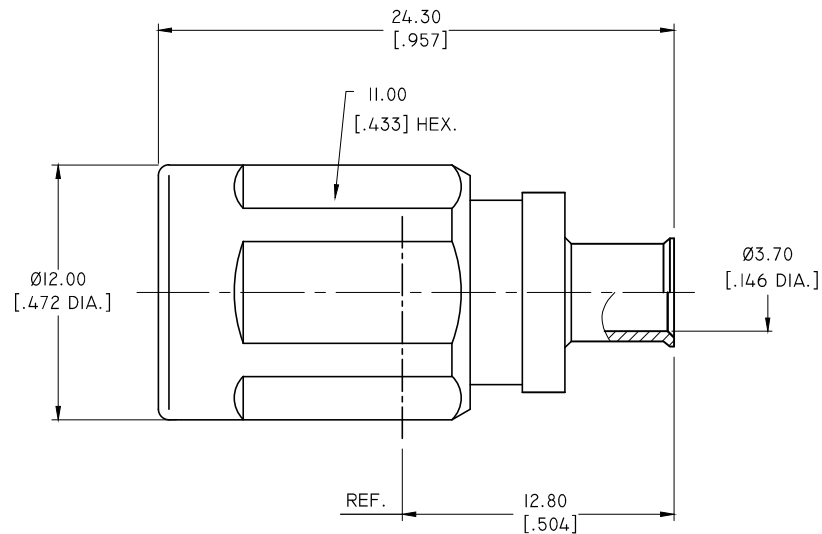
ELECTRICAL DATA:

- 1 IMPEDANCE: 50 Ω
- 2 FREQUENCY RANGE: DC~20 GHZ
- 3 VSWR: 1.25 MAX. TYPICAL
- 4 CONTACT RESISTANCE: CENTER CONTACT: 2.0 MΩ  
OUTER CONTACT: 1.0 MΩ
- 5 INTERMODULATION(3<sup>RD</sup> ORDER): <-166 DBC(2X43 DBM) AT 0.9-4 GHZ

ENVIRONMENTAL DATA:

- 1 TEMPERATURE RANGE: -55°C~+125°C
- 2 2011/65/EU(RoHS) AND 2015/863/(RoHS): COMPLIANT
- 3 1999/45/EC(REACH): COMPLIANT

REVISIONS			
REV.	DESCRIPTION	DATE	APPROVED
A	INITIAL RELEASE	02/19/19	J. QU



CABLE STRIPPING DIMENSIONS

DRAWN	W. YANG	DATE	02/19/19
CHECKED	X. B. YANG	DATE	02/19/19
APPROVED	J. QU	DATE	02/19/19
UNLESS OTHERWISE SPECIFIED DIMENSIONS ARE IN MILLIMETERS, DIMENSIONS IN [ ] ARE IN INCHES FOR CUSTOMER REFERENCE ONLY UNLESS OTHERWISE SPECIFIED TOLERANCE ARE:		THESE DRAWINGS AND SPECIFICATIONS ARE THE PROPERTY OF ANOISON ELECTRONICS LTD AND SHOULD NOT BE USED WITHOUT WRITTEN PERMISSION COPYRIGHT © 2019 ANOISON ELECTRONICS LTD	
.XX	+0.13 [.005"]		
.X	+0.20 [.008"]		
X	+0.50 [.019"]		
.X°	±1°		
X°	±2°		



TITLE			
M10(NEX10) STRAIGHT MALE SOLDER FOR .141 CABLE SCREW TYP, CAPTIVATED CONTACT			
VIEW		PART NO.	
		ANO 7411-2001	
SIZE	SCALE	SHEET	REV.
A3	2.5:1	1/1	A

4

3

2

1