

4

3

2

1

REVISIONS

REV.	DESCRIPTION	DATE	APPROVED
A	INITIAL RELEASE	06/24/15	J. QU

MATERIAL & FINISH:

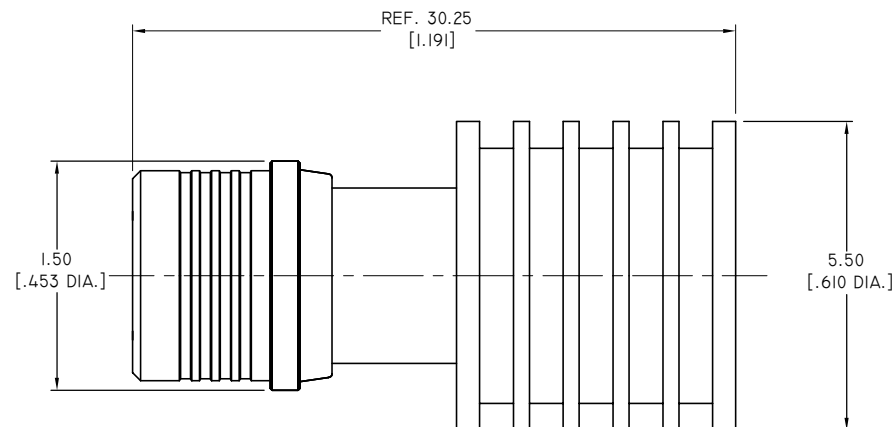
- 1. BODY: BRASS, ALBALOY PLATED
- 2. CENTER CONTACT: BERYLLIUM COPPER ALLOY, GOLD PLATED
- 3. UNLOCK SLEEVE: BRASS, ALBALOY PLATED
- 4. INSULATOR: PTFE
- 5. GASKETE: MVQ(SILICONE RUBBER)
- 6. RADIATOR: ALUMINIUM, BLACK

ENVIRONMENTAL DATA:

- 1. TEMPERATURE RANGE: -55 °C~+125 °C
- 2. 2011/65/EU (RoHS): COMPLIANT

ELECTRICAL SPECIFICATIONS:

- 1. IMPEDANCE: 50 Ω
- 2. FREQUENCY RANGE: DC~18GHZ
- 3. VSWR: 1.15 MAX AT DC~6GHZ
1.30 MAX AT 6~18GHZ
- 4. AVERAGE POWER: 5 WATTS
- 5. PEAK POWER: 500 WATTS



NOTES:

- 1 ALL SPECIFICATIONS ARE SUBJECT TO CHANGE WITHOUT NOTICE AT ANY TIME.
- 2 CUSTOMER OUTLINE DRAWING FOR REFERENCE ONLY.

DRAWN	X. B. YANG	DATE	06/24/15
CHECKED	W. YANG	DATE	06/24/15
APPROVED	J. QU	DATE	06/24/15
UNLESS OTHERWISE SPECIFIED DIMENSIONS ARE IN MILLINMETERS, DIMENSIONS IN [] ARE IN INCHES FOR CUSTOMER REFERENCE ONLY UNLESS OTHERWISE SPECIFIED TOLERANCE ARE:		THESE DRAWINGS AND SPECIFICATIONS ARE THE PROPERTY OF ANOISON ELECTRONICS LTD AND SHOULD NOT BE USED WITHOUT WRITTEN PERMISSION COPYRIGHT 2015 ANOISON ELECTRONICS LTD	
.XX	.13 [.005"]		
.X	.20 [.008"]		
X	.50 [.019"]		
X			



TITLE COAXIAL TERMINATION QMA MALE, 5 WATTS			
VIEW	PART NO. ANO 726-109		
	SIZE A3	SCALE 4:1	SHEET 1/1
		REV. A	

4

3

2

1