

4

3

2

1

MATERIAL & FINISH:

- 1 BODY: STAINLESS STEEL, PASSIVATED
- 2 CENTER CONTACT: BERYLLIUM COPPER ALLOY, GOLD PLATED
- 3 INSULATOR: PTFE & PEI

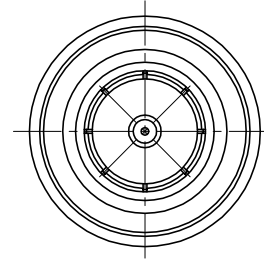
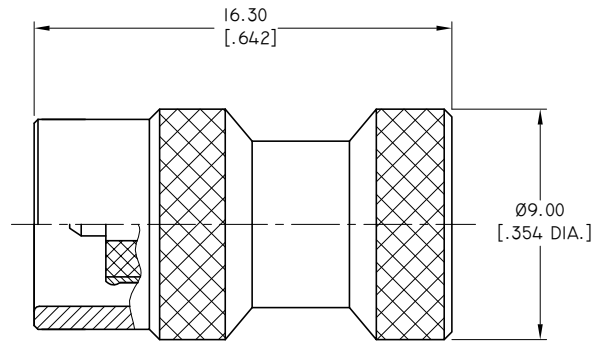
ENVIRONMENTAL DATA:

- 1 TEMPERATURE RANGE: -55 °C~+125 °C
- 2 2011/65/EU(RoHS) AND 2015/863/(RoHS): COMPLIANT
- 3 1907/2006/EC(REACH): COMPLIANT

ELECTRICAL DATA:

- 1 IMPEDANCE: 50 Ω
- 2 FREQUENCY RANGE: DC~26.5 GHz
- 3 VSWR: 1.15 MAX. AT DC~18 GHz
1.25 MAX. AT 18~26.5 GHz
- 4 AVERAGE POWER: 2 W AVERAGE TO 25°C AMBIENT TEMPERATURE,
DERATED LINEARLY TO 0.2 W @ 125°C
- 5 PEAK POWER: 250 W (5μS PULSE WIDTH WITH 0.8% DUTY CYCLE)

REVISIONS			
REV.	DESCRIPTION	DATE	APPROVED
A	INITIAL RELEASE	07/20/20	J QU
B	BODY MATERIAL & FINISH CHANGED TO STAINLESS STEEL & PASSIVATED	10/22/18	J QU
C	1. AVERAGE POWER CHANGED TO 2W 2. FREQUENCY RANGE CHANGED TO 26.5GHz 3. VSWR CHANGED	07/22/20	J QU



DRAWN X. B. YANG DATE 07/22/20	
CHECKED W. YANG DATE 07/22/20	
APPROVED J QU DATE 07/22/20	
UNLESS OTHERWISE SPECIFIED DIMENSIONS ARE IN MILLIMETERS. DIMENSIONS IN [] ARE IN INCHES FOR CUSTOMER REFERENCE ONLY UNLESS OTHERWISE SPECIFIED TOLERANCE ARE: .XX ±0.13 [.005"] .X ±0.20 [.008"] X ±0.50 [.019"] .X° ±1° X° ±2°	THESE DRAWINGS AND SPECIFICATIONS ARE THE PROPERTY OF ANOISON ELECTRONICS LTD AND SHOULD NOT BE USED WITHOUT WRITTEN PERMISSION COPYRIGHT © 2020 ANOISON ELECTRONICS LTD
TITLE COAXIAL TERMINATION PUSH ON SMA MALE, 2 WATTS, DC~26.5 GHz	
VIEW 	PART NO. ANO 721-121
SIZE A3	SCALE 5:1
SHEET 1/1	REV. C

4

3

2

1