

4

3

2

1

**MATERIAL & FINISH:**

- 1 BODY: BRASS, GOLD PLATED
- 2 CENTER CONTACT: BERYLLIUM COPPER ALLOY, GOLD PLATED
- 3 SPRING LATCH: BERYLLIUM COPPER ALLOY, GOLD PLATED
- 4 INSULATOR: PTFE

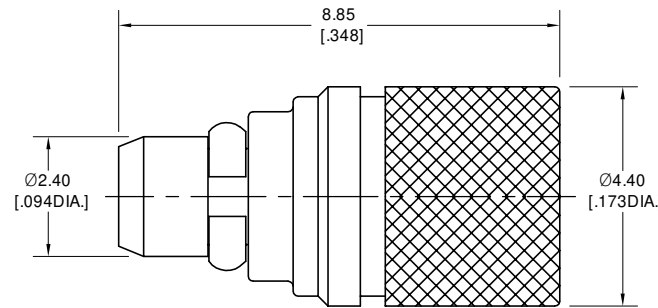
**ELECTRICAL DATA:**

- 1 IMPEDANCE: 50 Ω
- 2 FREQUENCY RANGE: DC~6 GHz
- 3 VSWR: 1.22 MAX
- 4 AVERAGE POWER: 1 WATTS TO 25°C AMBIENT TEMPERATRUE, DERATED LINEARLY TO 0.5 W @ 115°C

**ENVIRONMENTAL DATA:**

- 1 TEMPERATURE RANGE: -40°C~+115°C
- 2 2011/65/EU(RoHS) AND 2015/863/(RoHS): COMPLIANT
- 3 1999/2006/EC(REACH): COMPLIANT

REVISIONS			
REV.	DESCRIPTION	DATE	APPROVED
A	INITIAL RELEASE	09/30/25	J Q



DRAWN	P. C	DATE	09/30/25
CHECKED	W. Y	DATE	09/30/25
APPROVED	J Q	DATE	09/30/25
UNLESS OTHERWISE SPECIFIED DIMENSIONS ARE IN MILLIMETERS, DIMENSIONS IN [ ] ARE IN INCHES FOR CUSTOMER REFERENCE ONLY UNLESS OTHERWISE SPECIFIED TOLERANCE ARE:		THESE DRAWINGS AND SPECIFICATIONS ARE THE PROPERTY OF ANOISON ELECTRONICS LTD AND SHOULD NOT BE USED WITHOUT WRITTEN PERMISSION COPYRIGHT © 2025 ANOISON ELECTRONICS LTD	
	.XX	±0.13	[.005"]
	.X	±0.20	[.008"]
	X	±0.50	[.019"]
	.X°	±1°	
	X°	±2°	



TITLE			
COAXIAL TERMINATION, MMCX MALE, 1 WATT, DC~6 GHz			
VIEW		PART NO.	
		ANO 711-102	
SIZE	SCALE	SHEET	REV.
A3	10:1	1/1	A

4

3

2

1