

4

3

2

1

## REVISIONS

REV.	DESCRIPTION	DATE	APPROVED
A	INITIAL RELEASE	05/19/17	J. QU

## 1.0 MATERIAL &amp; FINISH:

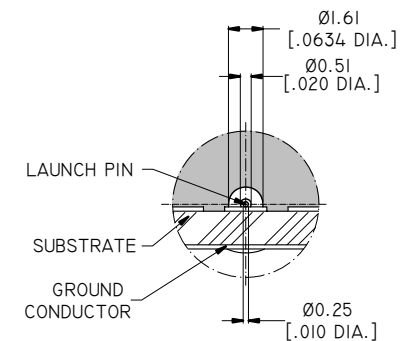
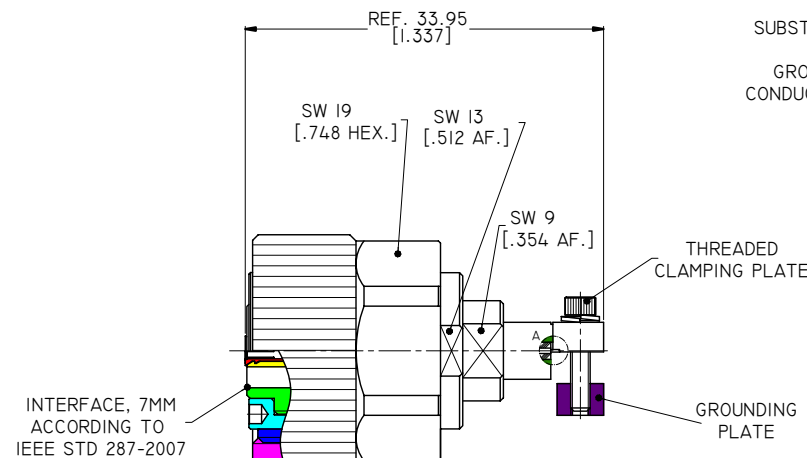
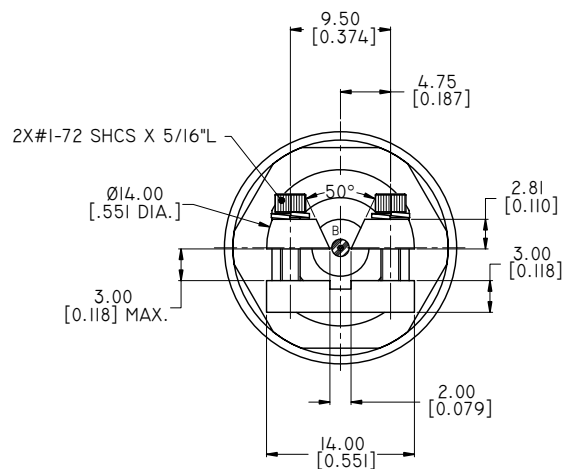
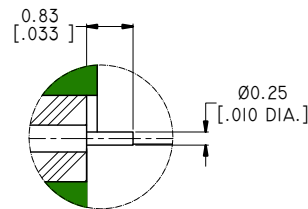
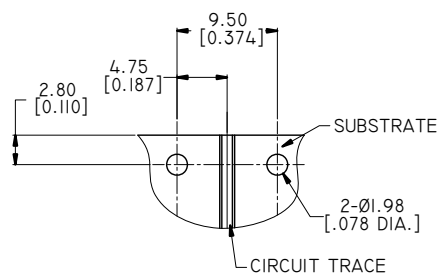
- 1.1 BODY: STAINLESS STEEL, PASSIVATED
- 1.2 CENTER CONTACT: BERYLLIUM COPPER ALLOY, GOLD PLATED
- 1.3 INSULATOR: PEI /PTFE
- 1.4 COUPLING NUT: STAINLESS STEEL, PASSIVATED
- 1.5 GROUNDING PLATE: BRASS, NICKEL PLATED

## 2.0 ENVIRONMENTAL DATA:

- 2.1 TEMPERATURE RANGE: -55°C~+125°C
- 2.2 2011/65/EU (RoHS): COMPLIANT

## 3.0 ELECTRICAL SPECIFICATIONS:

- 3.1 IMPEDANCE: 50 Ω
- 3.2 FREQUENCY RANGE: DC~18 GHZ

DETAIL B  
2:1INTERFACE, 7MM  
ACCORDING TO  
IEEE STD 287-2007THREADED  
CLAMPING PLATEGROUNDING  
PLATEDETAIL A  
5:1

DRAWN	P. CHEN	DATE	05/19/17
CHECKED	X. B. YANG	DATE	05/19/17
APPROVED	J. QU	DATE	05/19/17

UNLESS OTHERWISE SPECIFIED DIMENSIONS ARE IN MILLIMETERS, DIMENSIONS IN [ ] ARE IN INCHES FOR CUSTOMER REFERENCE ONLY UNLESS OTHERWISE SPECIFIED TOLERANCE ARE:

.XX	±0.13 [0.005"]
.X	±0.20 [0.008"]
X	±0.50 [0.019"]
.X°	±1°
X°	±2°

THESE DRAWINGS AND SPECIFICATIONS ARE THE PROPERTY OF ANOISON ELECTRONICS LTD AND SHOULD NOT BE USED WITHOUT WRITTEN PERMISSION  
COPYRIGHT © 2017  
ANOISON ELECTRONICS LTD



TITLE

7MM END LAUNCH CONNECTOR, .010 PIN

VIEW



PART NO.

ANO 6510-4003

SIZE

A3

SCALE

2:1

SHEET

1/1

REV.

A

4

3

2

1