

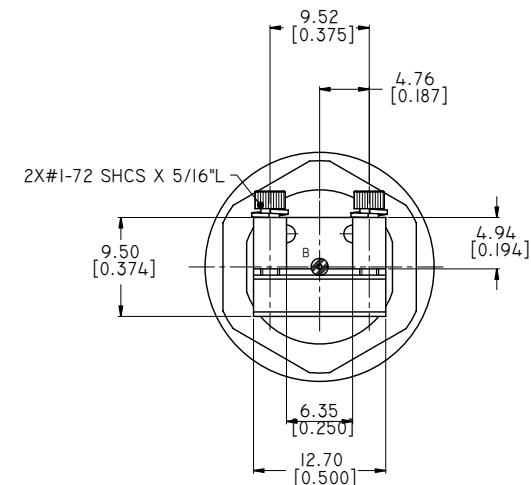
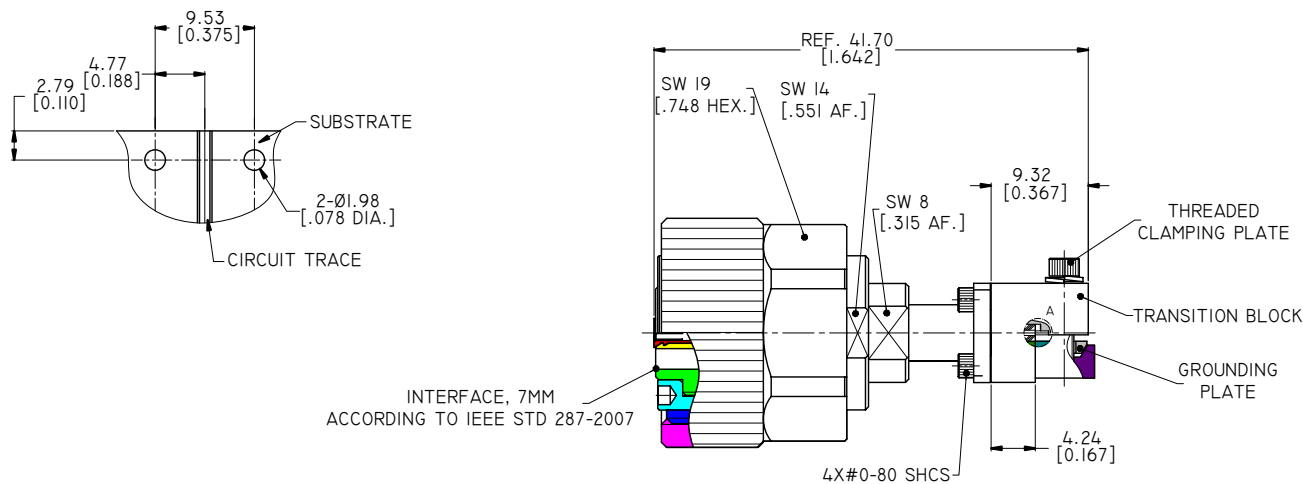
4

3

2

1

REVISIONS			
REV.	DESCRIPTION	DATE	APPROVED
C	Ø0.38[.015 DIA] WAS Ø0.25[.010 DIA] 4.94[.194] WAS 4.8[.189]	09/22/16	J. QU
D	ANO 650-AI-H WAS ANO 650-A-H	12/11/19	J. QU



7MM CONNECTOR

1. BODY: STAINLESS STEEL, PASSIVATED
2. CENTER CONTACT: BERYLLIUM COPPER ALLOY, GOLD PLATED
3. INSULATOR: PEI
4. COUPLING NUT: STAINLESS STEEL, PASSIVATED

TRANSITION BLOCK

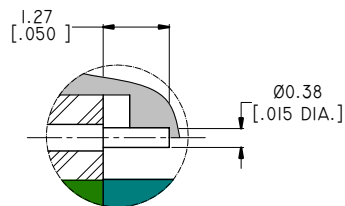
1. TRANSITION BLOCK: BRASS, NICKEL PLATED
2. GROUNDING PLATE: BRASS, NICKEL PLATED
3. THREADED CLAMPING PLATE: BRASS, NICKEL PLATED
4. LAUNCH PIN: BERYLLIUM COPPER ALLOY, GOLD PLATED
5. TRANSITION BLOCK DIELECTRIC: PTFE

ENVIRONMENTAL DATA:

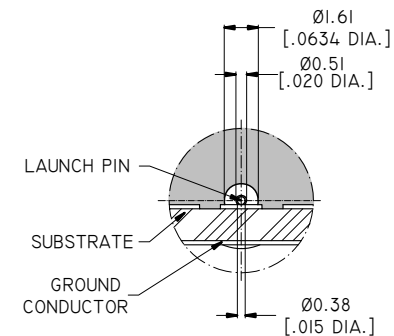
1. TEMPERATURE RANGE: -55°C~+125°C
2. 2011/65/EU (RoHS): COMPLIANT

ELECTRICAL SPECIFICATIONS:

1. IMPEDANCE: 50 Ω
2. FREQUENCY RANGE: DC~18 GHZ



DETAIL A



DETAIL B

DRAWN	P. CHEN	DATE	12/11/19		
CHECKED	X. B. YANG	DATE	12/11/19		
APPROVED	J. QU	DATE	12/11/19		
<small>UNLESS OTHERWISE SPECIFIED DIMENSIONS ARE IN MILLIMETERS, DIMENSIONS IN [] ARE IN INCHES FOR CUSTOMER REFERENCE ONLY UNLESS OTHERWISE SPECIFIED TOLERANCE ARE: .XX ±0.13 [.005"] .X ±0.20 [.008"] X ±0.50 [.019"] .X° ±1° X° ±2°</small>				<small>THESE DRAWINGS AND SPECIFICATIONS ARE THE PROPERTY OF ANOISON ELECTRONICS LTD AND SHOULD NOT BE USED WITHOUT WRITTEN PERMISSION COPYRIGHT © 2019 ANOISON ELECTRONICS LTD</small>	
TITLE				7MM END LAUNCH CONNECTOR HIGH PROFILE, .015 PIN	
VIEW		PART NO.		ANO 650-AI-H	
		SIZE	SCALE	SHEET	REV.
		A3	2:1	1/1	D

4

3

2

1