

1.0 MATERIAL & FINISH

- 1.1 BODY: STAINLESS STEEL, PASSIVATED
- 1.2 CENTER CONTACT: BERYLLIUM COPPER ALLOY, GOLD PLATED
- 1.3 COUPLING NUT: STAINLESS STEEL, PASSIVATED
- 1.4 INSULATOR: PEI

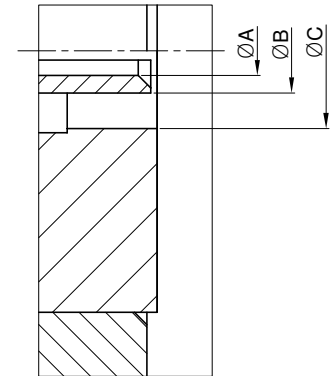
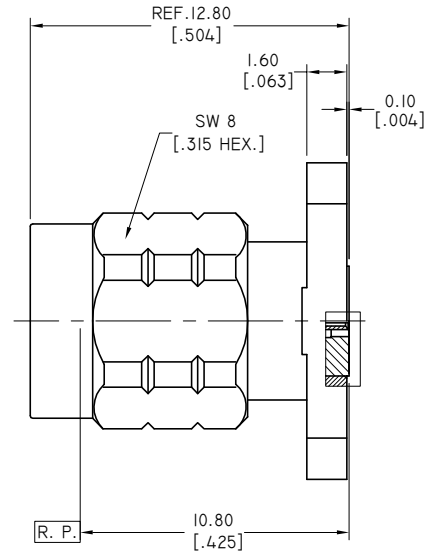
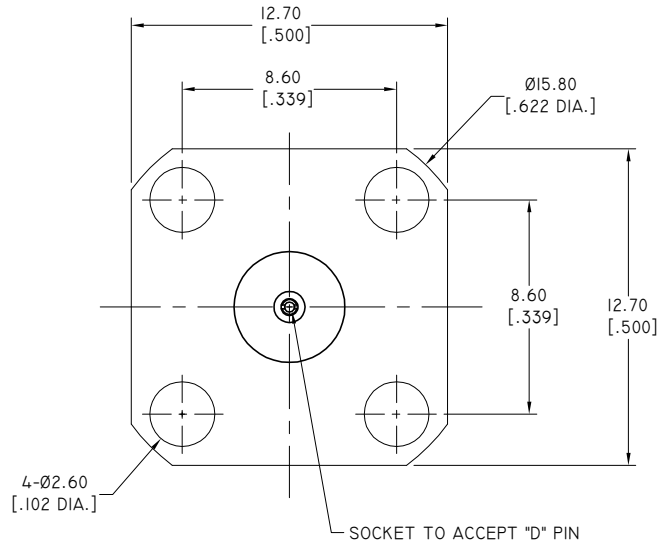
2.0 ENVIRONMENTAL DATA:

- 2.1 TEMPERATURE RANGE: -55 °C~+165 °C
- 2.2 2011/65/EU (RoHS): COMPLIANT

3.0 ELECTRICAL DATA:

- 3.1 IMPEDANCE: 50 OHMS
- 3.2 FREQUENCY RANGE: DC~65GHZ
- 3.3 VSWR: 1.25 MAX.

REVISIONS			
REV.	DESCRIPTION	DATE	APPROVED
A	INITIAL RELEASE	05/16/16	J. QU
B	OUTLINE DRAWING CHANGED	11/09/17	J. QU
C	ADDED DRAWING	01/09/25	J. QU



P/N	D	A	B	C	PIN DEPTH MAX.
ANO 6211-3012-1	Ø0.23 [0.009 DIA.]	Ø0.25 [0.010 DIA.]	Ø0.51 [0.020 DIA.]	Ø1.10 [0.043 DIA.]	2.00 [0.079]
ANO 6211-3012-2	Ø0.30 [0.012 DIA.]	Ø0.32 [0.0126 DIA.]	Ø0.58 [0.023 DIA.]	Ø1.25 [0.049 DIA.]	2.00 [0.079]

DRAWN	P. CHEN	DATE	01/09/25
CHECKED	L. YANG	DATE	01/09/25
APPROVED	J. QU	DATE	01/09/25
UNLESS OTHERWISE SPECIFIED DIMENSIONS ARE IN MILLIMETERS, DIMENSIONS IN [] ARE IN INCHES FOR CUSTOMER REFERENCE ONLY UNLESS OTHERWISE SPECIFIED TOLERANCE ARE:		THESE DRAWINGS AND SPECIFICATIONS ARE THE PROPERTY OF ANOISON ELECTRONICS LTD AND SHOULD NOT BE USED WITHOUT WRITTEN PERMISSION COPYRIGHT © 2025 ANOISON ELECTRONICS LTD	
.XX	±0.13 [0.005"]		
.X	±0.20 [0.008"]		
X	±0.50 [0.019"]		
.X°	±1°		
X°	±2°		

TITLE
1.85MM STRAIGHT MALE 4 HOLE .50" SQ FLANGE MOUNT, FIELD REPLACEABLE

VIEW

PART NO.
ANO 6211-3012

SIZE A3	SCALE 5:1	SHEET 1/1	REV. C
-------------------	---------------------	---------------------	------------------

