

4 3 2 1

**MATERIAL & FINISH:**

- 1 BODY: BRASS, NICKEL PLATED
- 2 CENTER CONTACT: PHOSPHOR BRONZE, SILVER PLATED
- 3 INSULATOR: PTFE
- 4 SOLDER FERRULE: BRASS, GOLD PLATED

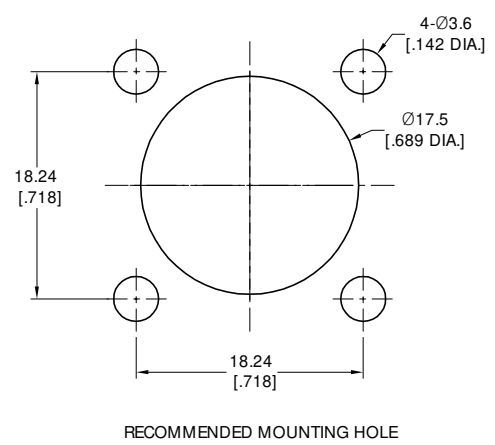
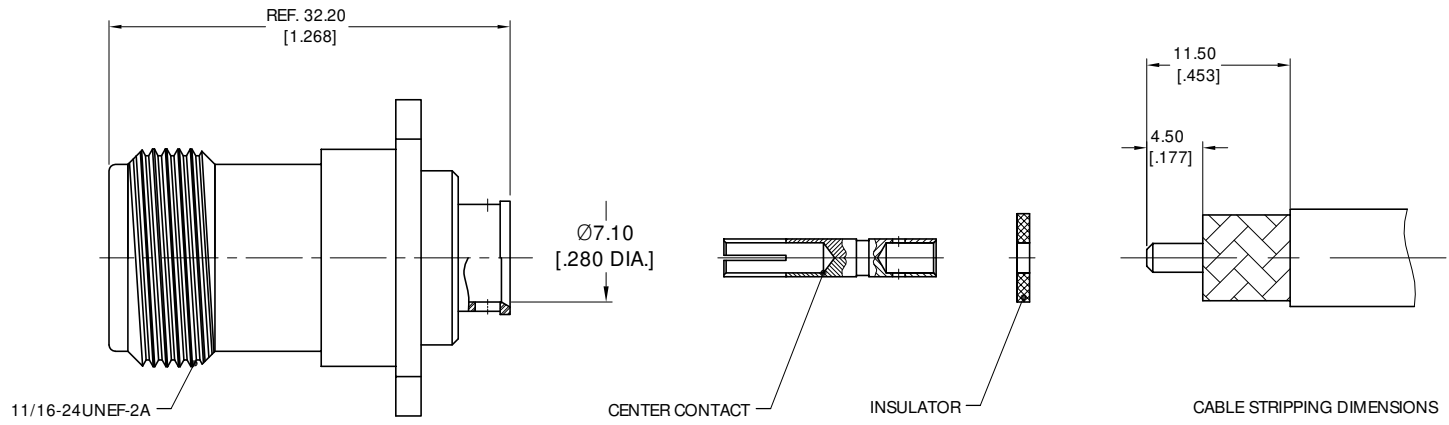
**ELECTRICAL DATA:**

- 1 IMPEDANCE: 50 Ω
- 2 FREQUENCY RANGE: DC~11 GHz
- 3 VSWR: 1.30 TYP.


**ENVIRONMENTAL DATA:**

- 1 TEMPERATURE RANGE: -55 °C~+125 °C
- 2 2011/65/EU(RoHS) AND 2015/863/(RoHS): COMPLIANT
- 3 1907/2006/EC(REACH): COMPLIANT

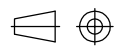
REVISIONS			
REV.	DESCRIPTION	DATE	APPROVED
A	INITIAL RELEASE	10/09/21	J QU



DRAWN	P. CHEN	DATE	10/09/21
CHECKED	W. YANG	DATE	10/09/21
APPROVED	J QU	DATE	10/09/21
UNLESS OTHERWISE SPECIFIED DIMENSIONS ARE IN MILLIMETERS, DIMENSIONS IN [ ] ARE IN INCHES FOR CUSTOMER REFERENCE ONLY UNLESS OTHERWISE SPECIFIED TOLERANCE ARE:		THESE DRAWINGS AND SPECIFICATIONS ARE THE PROPERTY OF ANOISON ELECTRONICS LTD AND SHOULD NOT BE USED WITHOUT WRITTEN PERMISSION COPYRIGHT © 2021 ANOISON ELECTRONICS LTD	
	XX	±0.13	[.005"]
	.X	±0.20	[.008"]
	X	±0.50	[.019"]
	.X°	±1°	
	X°	±2°	



**TITLE**  
SC STRAIGHT FEMALE 4 HOLE FLANGE SOLDER FOR IW 2801/GORE 3450/PLEX310 CABLE

**VIEW** 

<b>PART NO.</b> ANO 5912-2015			
<b>SIZE</b> A3	<b>SCALE</b> 2.5:1	<b>SHEET</b> 1/1	<b>REV.</b> A

4 3 2 1