

4

3

2

1

MATERIAL & FINISH:

- 1 BODY: BRASS, ALBALOY PLATED
- 2 CENTER CONTACT: PHOSPHOR BRONZE, SILVER PLATED
- 3 INSULATOR: PTFE
- 4 COUPLING NUT: BRASS, ALBALOY PLATED
- 5 GASKET: SILICONE RUBBER

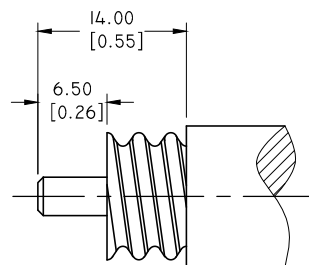
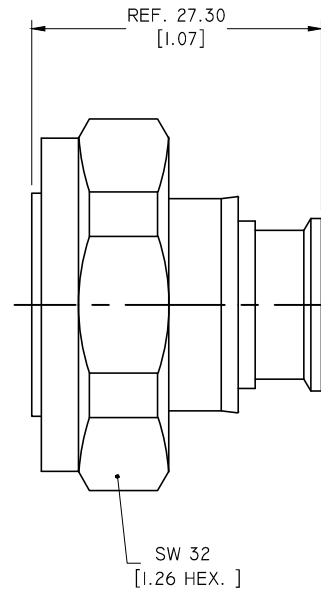
ELECTRICAL DATA:

- 1 IMPEDANCE: 50 Ω
- 2 FREQUENCY RANGE: DC~6 GHZ
- 3 VSWR : ≤ 1.20
- 4 INSERTION LOSS : ≤ 0.25 DB
- 5 PIM3: ≥ 170 DBC (2X43DBM) AT 900 MHZ

ENVIRONMENTAL DATA:

- 1 TEMPERATURE RANGE: -55°C ~ +125°C
- 2 2011/65/EU (RoHS): COMPLIANT

REVISIONS			
REV.	DESCRIPTION	DATE	APPROVED
A	INITIAL RELEASE	11/05/18	J. QU



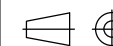
CABLE STRIPPING DIMENSIONS

DRAWN	W. YANG	DATE	11/05/18
CHECKED	L. YANG	DATE	11/05/18
APPROVED	J. QU	DATE	11/05/18
UNLESS OTHERWISE SPECIFIED DIMENSIONS ARE IN MILLIMETERS, DIMENSIONS IN [] ARE IN INCHES FOR CUSTOMER REFERENCE ONLY UNLESS OTHERWISE SPECIFIED TOLERANCE ARE:		THESE DRAWINGS AND SPECIFICATIONS ARE THE PROPERTY OF ANOISON ELECTRONICS LTD AND SHOULD NOT BE USED WITHOUT WRITTEN PERMISSION COPYRIGHT © 2018 ANOISON ELECTRONICS LTD	
.XX	± 0.13 [0.005"]		
.X	± 0.20 [0.008"]		
X	± 0.50 [0.019"]		
.X°	$\pm 1^\circ$		
X°	$\pm 2^\circ$		



TITLE
7/16 STRAIGHT MALE SOLDER FOR 1/2" SUPER FLEXIBLE CABLE

VIEW



PART NO.

ANO 5611-2030

SIZE
A3SCALE
2:1SHEET
1/1REV.
A