

**MATERIAL & FINISH**

- 1 BODY: BRASS, ALBALOY PLATED
- 2 CENTER CONTACT: PHOSPHON BRONZE, SILVER PLATED
- 3 INSULATOR: PTFE
- 4 COUPLING NUT: BRASS, ALBALOY PLATED
- 5 GASKET: SILICONE RUBBER

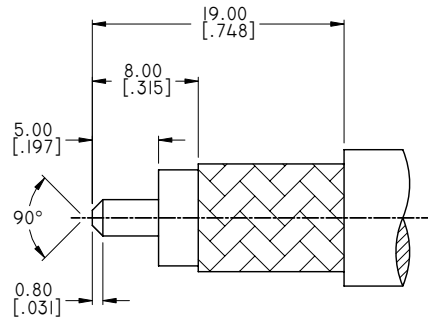
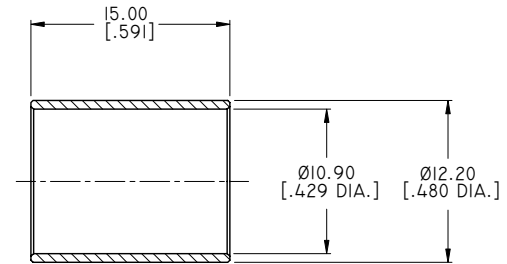
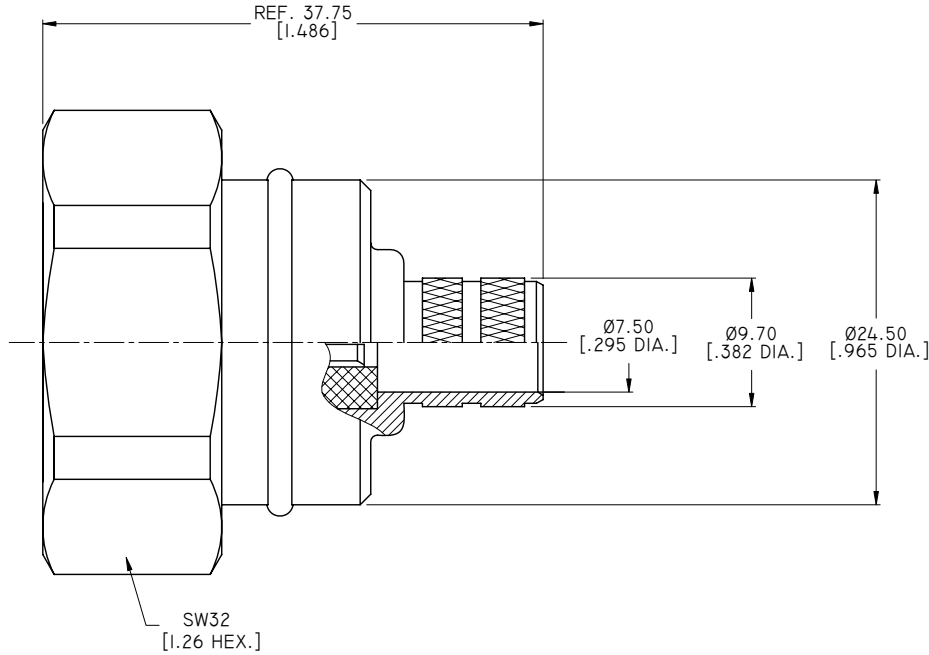
**ELECTRICAL DATA:**

- 1 IMPEDANCE: 50 OHMS
- 2 FREQUENCY RANGE: DC~6 GHZ
- 3 VSWR:  $\leq 1.30$  AT DC~3GHZ  
 $\leq 1.40$  AT 3GHZ~6GHZ

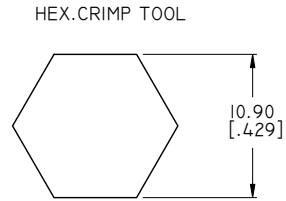
**ENVIRONMENTAL DATA:**

- 1 TEMPERATURE RANGE: -55°C~+125°C
- 2 2011/65/EU (RoHS): COMPLIANT

REVISIONS			
REV.	DESCRIPTION	DATE	APPROVED
A	INITIAL RELEASE	03/06/15	J. QU
B	DRAWING FORMAT CHANGE	10/23/17	J. QU



CABLE STRIPPING DIMENSIONS



CRIMP WIDTH: 12.0 [.472]

DRAWN	X. B. YANG	DATE	10/23/17
CHECKED	W. YANG	DATE	10/23/17
APPROVED	J. QU	DATE	10/23/17
UNLESS OTHERWISE SPECIFIED DIMENSIONS ARE IN MILLIMETERS. DIMENSIONS IN [ ] ARE IN INCHES FOR CUSTOMER REFERENCE ONLY UNLESS OTHERWISE SPECIFIED TOLERANCE ARE:		THESE DRAWINGS AND SPECIFICATIONS ARE THE PROPERTY OF ANOISON ELECTRONICS LTD AND SHOULD NOT BE USED WITHOUT WRITTEN PERMISSION COPYRIGHT © 2017 ANOISON ELECTRONICS LTD	
.XX	±0.13 [.005"]		
.X	±0.20 [.008"]		
X	±0.50 [.019"]		
.X°	±1°		
X°	±2°		



TITLE  
7/16 STRAIGHT MALE CRIMP FOR LMR400 CABLE CAPTIVATED CONTACT

VIEW	PART NO. ANO 5611-2029		
SIZE A3	SCALE 2.5:1	SHEET 1/1	REV. B