

MATERIAL

1. BODY: BRASS
2. CENTER CONTACT & WASHER: PHOSPHOR BRONZE
3. INSULATOR: PTFE
4. FASTENING NUT: BRASS

FINISH:

1. BODY: ALBALOY
2. CENTER CONTACT: GOLD
3. WASHER & FASTENING NUT: NICKEL

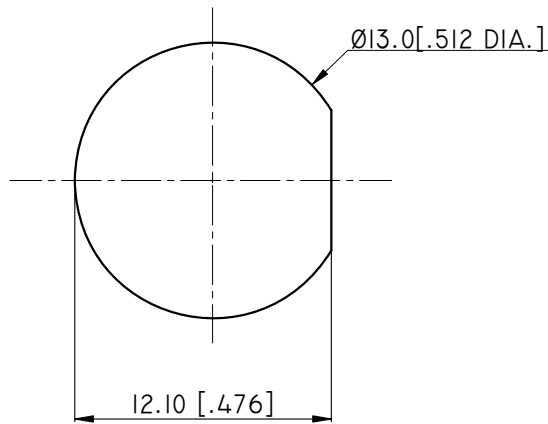
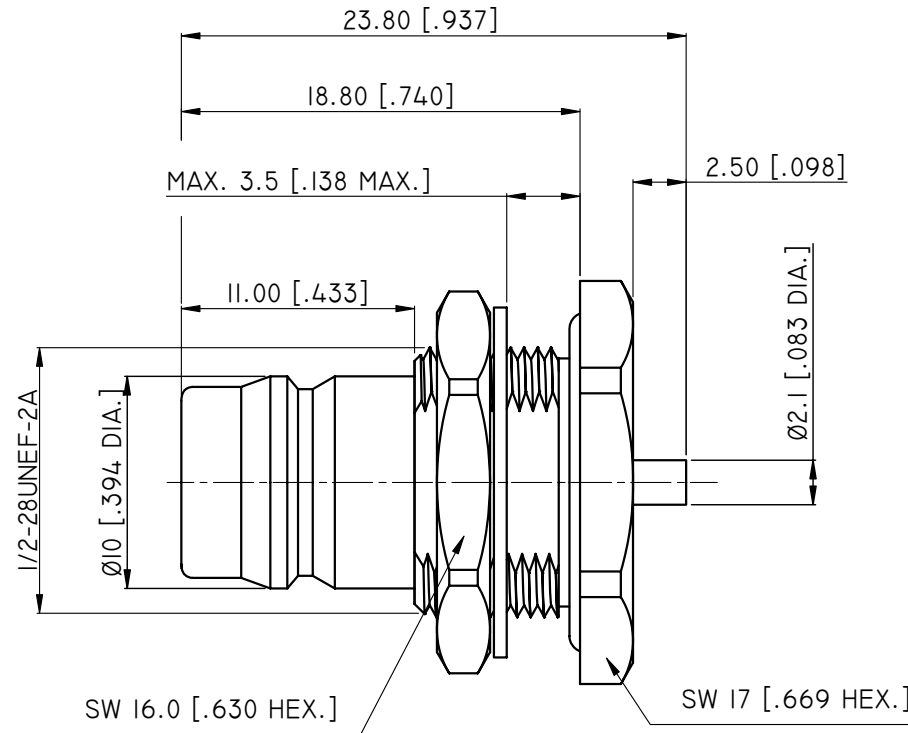
ENVIRONMENTAL DATA:

1. TEMPERATURE RANGE: -55 °C~+125 °C
2. 2011/65/EU (RoHS): COMPLIANT

ELECTRICAL SPECIFICATIONS:

1. IMPEDANCE: 50 Ω
2. FREQUENCY RANGE: DC~11GHZ
3. VSWR: ≤1.30

REVISIONS			
REV.	DESCRIPTION	DATE	APPROVED
B	PAINT CHANGED	07/09/12	J. QU
C	OUTLINE CHANGED	08/30/13	J. QU



RECOMMENDED MOUNTING HOLE

DRAWN	H. ZHANG	DATE	08/30/13				
CHECKED	X. B. YANG	DATE	08/30/13				
APPROVED	J. QU	DATE	08/30/13				
<small>UNLESS OTHERWISE SPECIFIED DIMENSIONS ARE IN MILLIMETERS, DIMENSIONS IN [] ARE IN INCHES FOR CUSTOMER REFERENCE ONLY UNLESS OTHERWISE SPECIFIED TOLERANCE ARE:</small>				<small>THESE DRAWINGS AND SPECIFICATIONS ARE THE PROPERTY OF ANOISON ELECTRONICS LTD AND SHOULD NOT BE USED WITHOUT WRITTEN PERMISSION COPYRIGHT © 2013 ANOISON ELECTRONICS LTD</small>			
<small>.XX ±0.13 [.005"] .X ±0.20 [.008"] X ±0.50 [.019"] .X° ±1° X° ±2°</small>				TITLE HPQN STRAIGHT FEMALE BULKHEAD WITH PIN BACKEND			
VIEW 				PART NO. ANO 5312-5015			
SIZE A3		SCALE 4:1		SHEET 1/1		REV. C	