

1.0 MATERIAL & FINISH:

1.1 BODY: SEE TABLE I

1.2 CENTER CONTACT: PHOSPHOR BRONZE, GOLD PLATING

1.3 INSULATOR: PTFE

1.4 FASTENING NUT: SEE TABLE I

2.0 ENVIRONMENTAL DATA:

2.1 TEMPERATURE RANGE: -55°C~+125°C

2.2 2002/95/EC (RoHS): COMPLIANT

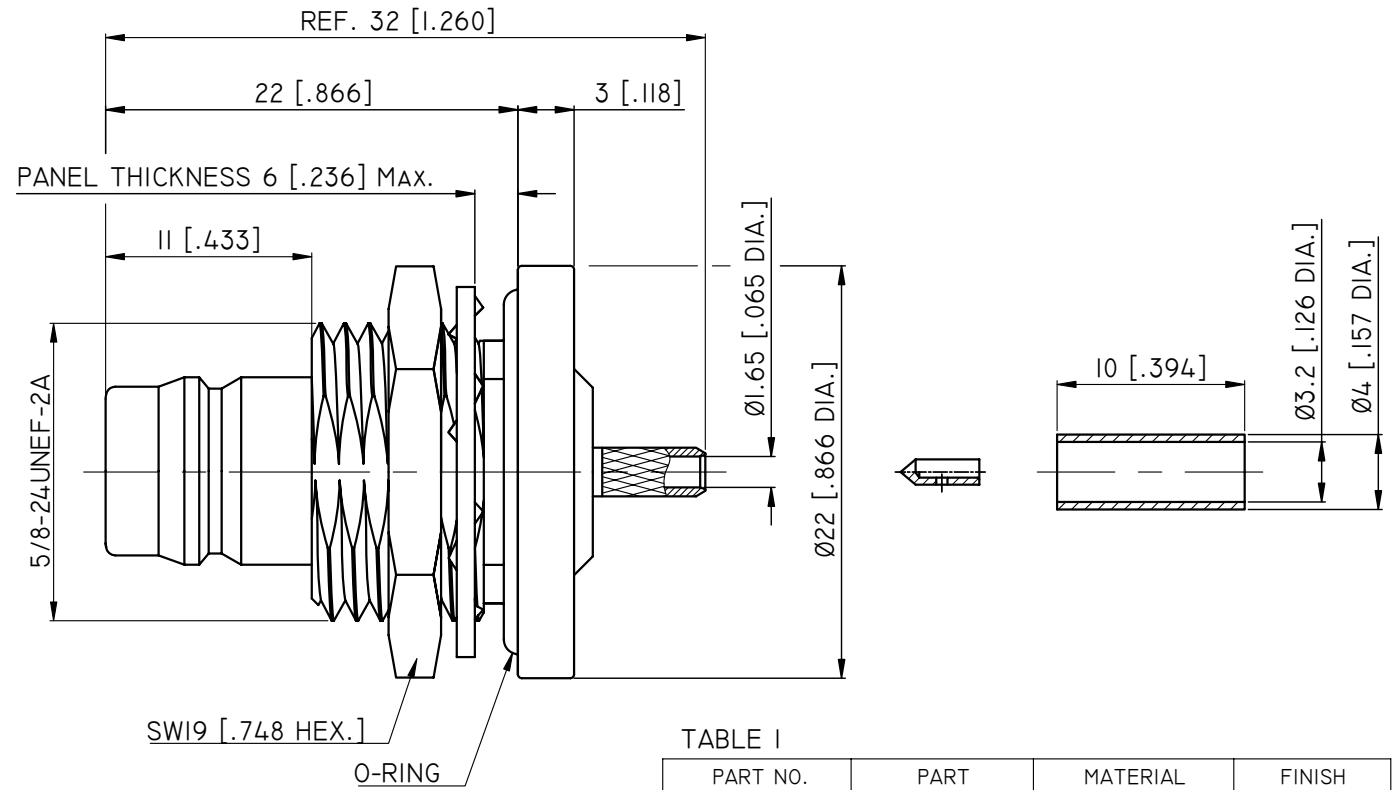
3.0 ELECTRICAL SPECIFICATIONS:

3.1 IMPEDANCE: 50 Ω

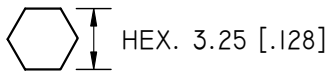
3.2 FREQUENCY RANGE: DC~6GHZ

3.3 VSWR: ≤1.30

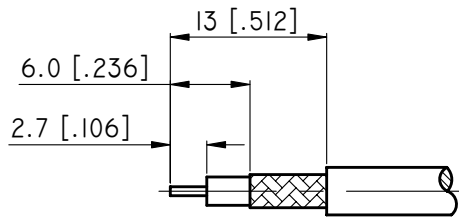
REVISIONS			
REV.	DESCRIPTION	DATE	APPROVED
B	OUTLINE DRAWING CHANGED	2013.08.29	J. QU
C	ADDED MATERIAL, PART NO.	2013.11.08	J. QU



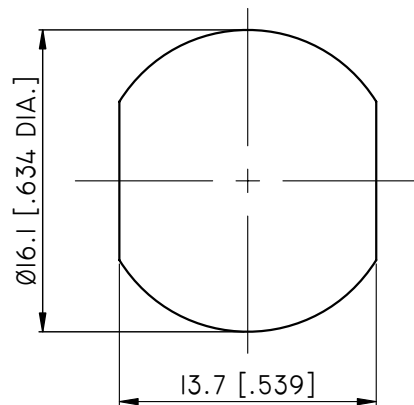
HEX. CRIMP TOOL



CRIMP WIDTH: 7.50 [.295]



CABLE STRIPPING DIMENSIONS



RECOMMENDED MOUNTING HOLE

TABLE I

PART NO.	PART	MATERIAL	FINISH
ANO 5312-1039	BODY	BRASS	ALBALOY
	FASTENING NUT	BRASS	ALBALOY
ANO 5312-1039-1	BODY	STAINLESS STEEL	PASSIVATION
	FASTENING NUT	STAINLESS STEEL	PASSIVATION

DRAWN	L. YANG	DATE	11/08/13
CHECKED	X. B. YANG	DATE	11/08/13
APPROVED	J. QU	DATE	11/08/13
UNLESS OTHERWISE SPECIFIED DIMENSIONS ARE IN MILLIMETERS DIMENSIONS IN [ ] ARE IN INCHES FOR CUSTOMER REFERENCE ONLY UNLESS OTHERWISE SPECIFIED TOLERANCE ARE: .XX ±0.13 [.005"] .X ±0.20 [.008"] X ±0.50 [.019"] .X° ±1° X° ±2°			



TITLE			
HPQN STRAIGHT FEMALE BULKHEAD WATERPROOF FOR LMR100 CABLE			
VIEW		PART NO.	
		ANO 5312-1039	
SIZE	SCALE	SHEET	REV.
A3	2.5:1	1/1	C