

4

3

2

1

MATERIAL & FINISH

- 1 BODY: STAINLESS STEEL, PASSIVATED
- 2 CENTER CONTACT: BERYLLIUM COPPER ALLOY, GLOD PLATED
- 3 INSULATOR: PTFE & PEI

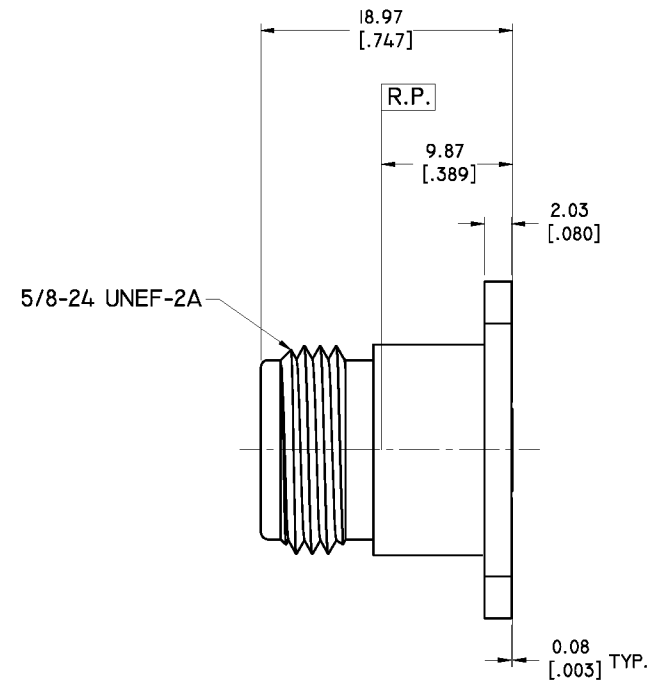
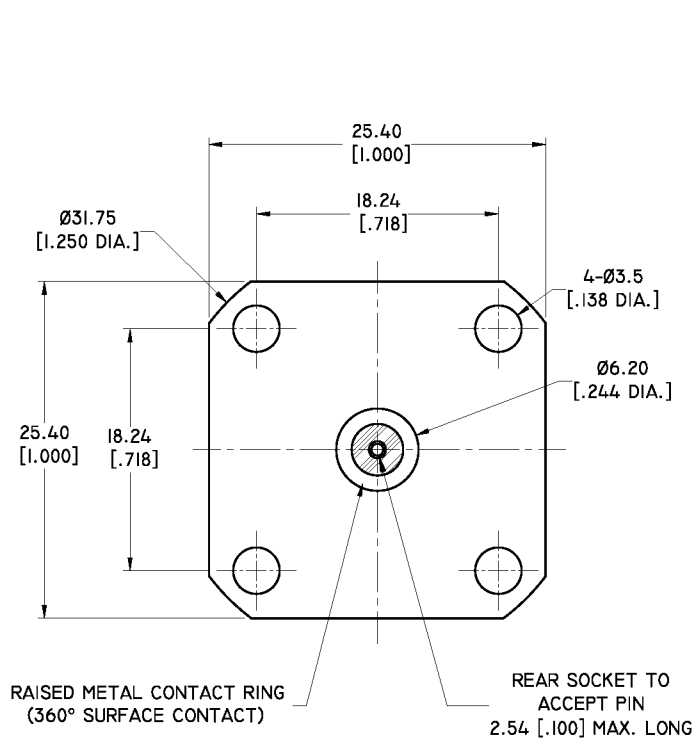
ELECTRICAL DATA:

- 1 IMPEDANCE: 50 OHMS
- 2 FREQUENCY RANGE: DC-18 GHZ
- 3 VSWR: 1.15 MAX.

ENVIRONMENTAL DATA:

- 1 TEMPERATURE RANGE: -55°C~+165°C
- 2 2011/65/EU(ROHS) AND 2015/863/(ROHS): COMPLIANT
- 3 1907/2006/EC(REACH) AND 1999/45/EC(REACH): COMPLIANT

REVISIONS			
REV.	DESCRIPTION	DATE	APPROVED
A	INITIAL RELEASE	10/23/15	J. QU
B	PART NO. ADDED	11/16/15	J. QU
C	1. 18.97 [.747] WAS 18.8 [.740] 2. Ø6.20 [.244 DIA.] WAS Ø7.37 [.290 DIA.]	07/31/19	J. QU



PART NO.	D
ANO 5112-3231-1	Ø0.91 [.036 DIA.]
ANO 5112-3231-2	Ø0.51 [.020 DIA.]
ANO 5112-3231-3	Ø0.46 [.018 DIA.]
ANO 5112-3231-4	Ø0.38 [.015 DIA.]

DRAWN	X. B. YANG	DATE	07/31/19
CHECKED	P. CHEN	DATE	07/31/19
APPROVED	J. QU	DATE	07/31/19
UNLESS OTHERWISE SPECIFIED DIMENSIONS ARE IN MILLIMETERS, DIMENSIONS IN [] ARE IN INCHES FOR CUSTOMER REFERENCE ONLY UNLESS OTHERWISE SPECIFIED TOLERANCE ARE:		THESE DRAWINGS AND SPECIFICATIONS ARE THE PROPERTY OF ANOISON ELECTRONICS LTD AND SHOULD NOT BE USED WITHOUT WRITTEN PERMISSION COPYRIGHT © 2019 ANOISON ELECTRONICS LTD	
.XX	±0.13 [.005"]		
.X	±0.20 [.008"]		
X	±0.50 [.019"]		
.X°	±1°		
X°	±2°		



TITLE			
N TYPE FEMALE, 4 HOLE 1.00" SQ FLANGE TO ACCEPT PIN			
VIEW		PART NO.	
		ANO 5112-3231	
SIZE	SCALE	SHEET	REV.
A3	2.5:1	I/I	C

4

3

2

1