

MATERIAL & FINISH:

- 1 BODY: BRASS, NICKEL PLATED
- 2 CENTER CONTACT: PHOSPHOR BRONZE, GOLD PLATED
- 3 CRIMP: COPPER, NICKEL PLATED
- 4 INSULATOR: PTFE

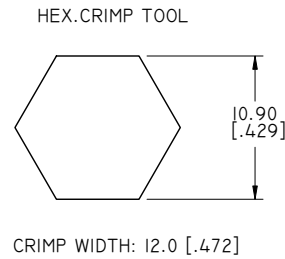
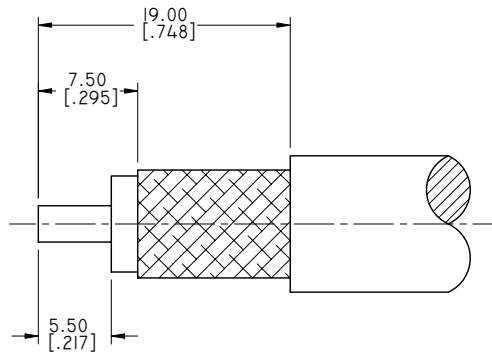
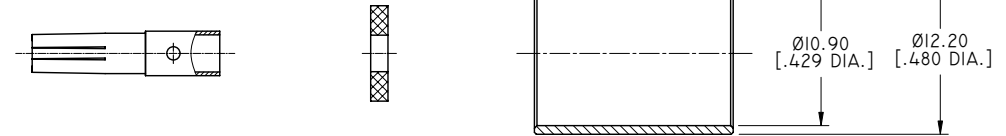
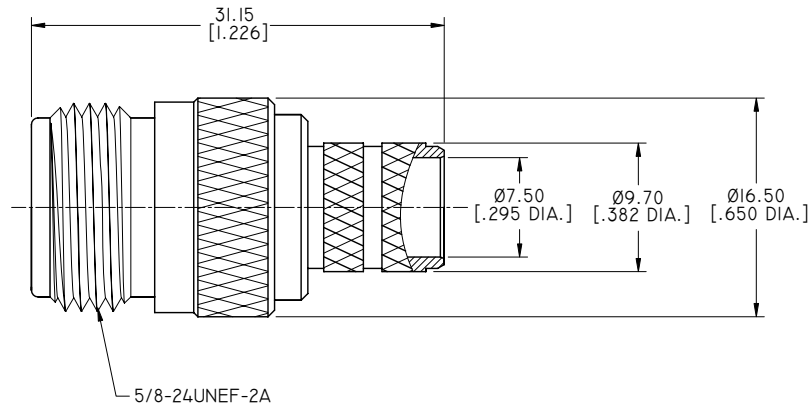
ELECTRICAL DATA:

- 1 IMPEDANCE: 50 OHMS
- 2 FREQUENCY RANGE: DC~6 GHZ
- 3 VSWR: 1.25 MAX.

ENVIRONMENTAL DATA:

- 1 OPERATING TEMPERATURE: -55°C~+125°C
- 2 2011/65/EU (RoHS): COMPLIANT

REVISIONS			
REV.	DESCRIPTION	DATE	APPROVED
B	STRUCTURE CHANGED	08/28/13	J. QU
C	VSWR CHANGED	02/21/14	J. QU



CABLE STRIPPING DIMENSIONS

DRAWN	L. YANG	DATE	02/21/14
CHECKED	X. B. YANG	DATE	02/21/14
APPROVED	J. QU	DATE	02/21/14
UNLESS OTHERWISE SPECIFIED DIMENSIONS ARE IN MILLIMETERS. DIMENSIONS IN [ ] ARE IN INCHES FOR CUSTOMER REFERENCE ONLY UNLESS OTHERWISE SPECIFIED TOLERANCE ARE:		THESE DRAWINGS AND SPECIFICATIONS ARE THE PROPERTY OF ANOISON ELECTRONICS LTD AND SHOULD NOT BE USED WITHOUT WRITTEN PERMISSION COPYRIGHT © 2014 ANOISON ELECTRONICS LTD	
.XX	±0.08 [.003"]		
.X	±0.20 [.008"]		
X	±0.50 [.019"]		
.X°	±1°		
X°	±2°		



TITLE			
N STRAIGHT FEMALE CRIMP FOR LMR400 CABLE			
VIEW		PART NO.	
		ANO 5112-2025	
SIZE	SCALE	SHEET	REV.
A3	2.5:1	1/1	C