

1.0 MATERIAL & FINISH

- 1.1 FRONT BODY: BRASS, NICKEL PLATED
- 1.2 CENTER CONTACT: PHOSPHOR BRONZE, GOLD PLATED
- 1.3 INSULATOR: PTFE
- 1.4 REAR BODY: BRASS, ALBALOY PLATED

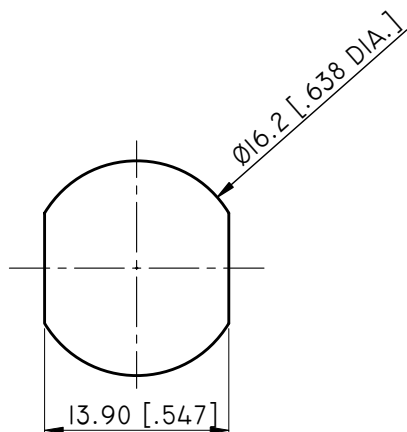
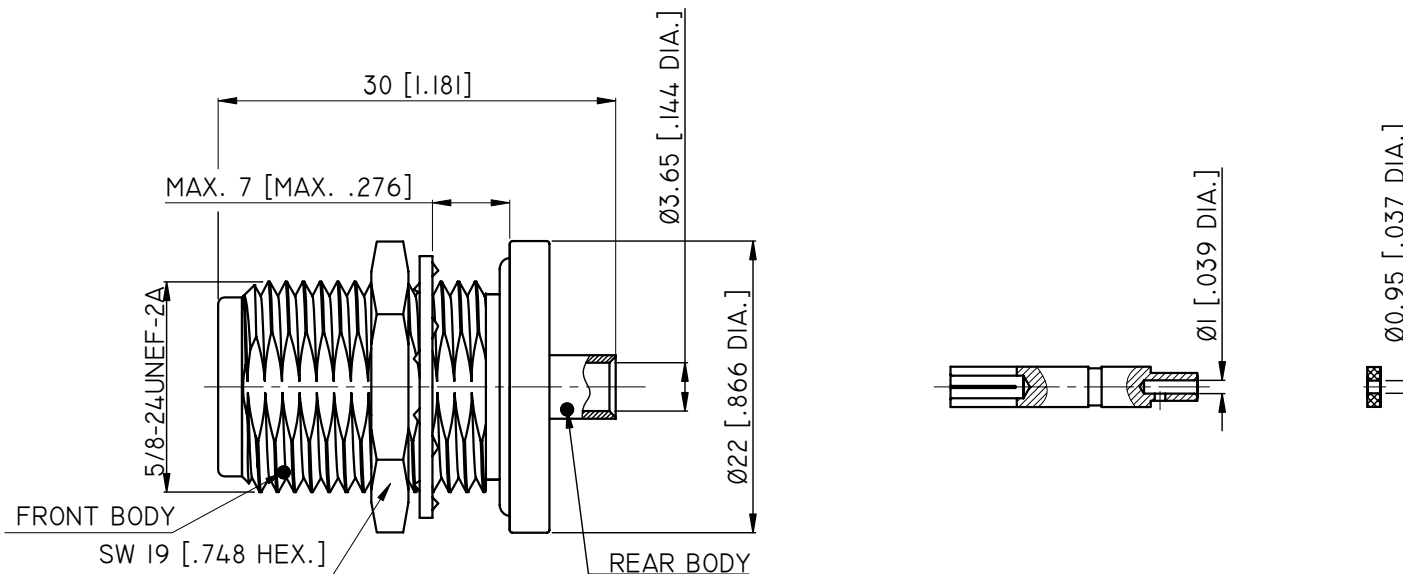
2.0 ENVIRONMENTAL DATA:

- 2.1 TEMPERATURE RANGE: -55°C~+165°C
- 2.2 2002/95/EC (RoHS): COMPLIANT

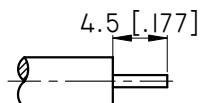
3.0 ELECTRICAL SPECIFICATIONS:

- 3.1 IMPEDANCE: 50 Ω
- 3.2 FREQUENCY RANGE: DC~6GHZ
- 3.3 VSWR: ≤1.20 AT DC~3GHZ  
≤1.35 AT 3~6GHZ

REVISIONS			
REV.	DESCRIPTION	DATE	APPROVED
A	INITIAL RELEASE	09/24/08	J. QU
B	STRUCTURE CHANGED	06/07/14	J. QU



RECOMMENDED MOUNTING HOLE



CABLE STRIPPING DIMENSIONS

DRAWN	L. YANG	DATE	06/07/14				
CHECKED	X. B. YANG	DATE	06/07/14				
APPROVED	J. QU	DATE	06/07/14				
UNLESS OTHERWISE SPECIFIED DIMENSIONS ARE IN MILLINETERS, DIMENSIONS IN [ ] ARE IN INCHES FOR CUSTOMER REFERENCE ONLY UNLESS OTHERWISE SPECIFIED TOLERANCE ARE: .XX ±0.13 [.005"] .X ±0.20 [.008"] X ±0.50 [.019"] .X° ±1° X° ±2°				THESE DRAWINGS AND SPECIFICATIONS ARE THE PROPERTY OF ANOISON ELECTRONICS LTD AND SHOULD NOT BE USED WITHOUT WRITTEN PERMISSION COPYRIGHT © 2013 ANOISON			
TITLE				N STRAIGHT BULKHEAD FEMALE SOLDER FOR .141 CABLE			
VIEW				PART NO. ANO 5112-1029			
SIZE A3		SCALE 2.5:1		SHEET 1/1		REV. B	