

1.0 MATERIAL & FINISH:

- 1.1 BODY: BRASS, ALBALOY PLATED
- 1.2 CENTER CONTACT: BRASS, GOLD PLATED
- 1.3 INSULATOR: PTFE
- 1.4 COUPLING NUT: BRASS, ALBALOY PLATED
- 1.5 O-RING: MVQ(SILICONE RUBBER)

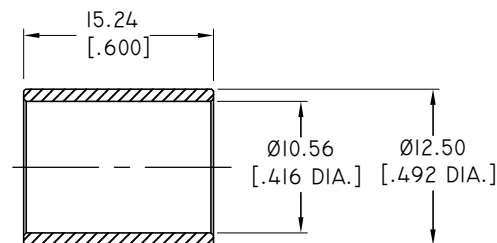
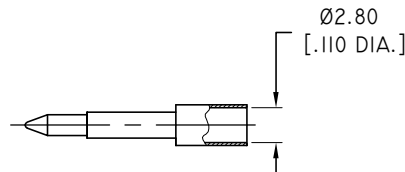
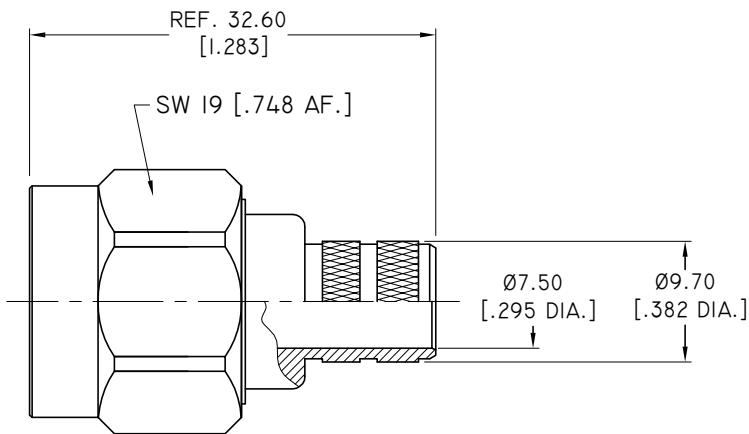
2.0 ENVIRONMENTAL DATA:

- 2.1 TEMPERATURE RANGE: -55°C~+125°C
- 2.2 2011/65/EU (RoHS): COMPLIANT

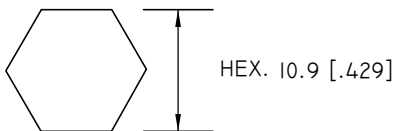
3.0 ELECTRICAL DATA:

- 3.1 IMPEDANCE: 50 Ω
- 3.2 FREQUENCY RANGE: DC~11GHZ
- 3.3 VSWR: 1.25 MAX. AT DC~6GHZ

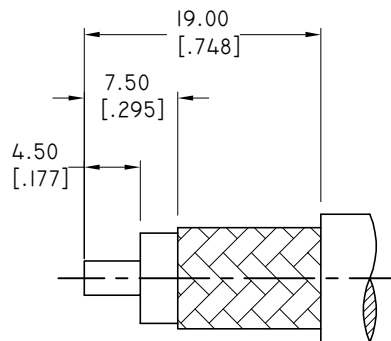
REVISIONS			
REV.	DESCRIPTION	DATE	APPROVED
A	INITIAL RELEASE	07/31/24	J. QU



HEX.CRIMP TOOL



CRIMP WIDTH: 13.5 [.531]



CABLE STRIPPING DIMENSIONS

DRAWN	P. CHEN	DATE	07/31/24
CHECKED	X. B. YANG	DATE	07/31/24
APPROVED	J. QU	DATE	07/31/24
UNLESS OTHERWISE SPECIFIED DIMENSIONS ARE IN MILLIMETERS. DIMENSIONS IN [] ARE IN INCHES FOR CUSTOMER REFERENCE ONLY UNLESS OTHERWISE SPECIFIED TOLERANCE ARE:		THESE DRAWINGS AND SPECIFICATIONS ARE THE PROPERTY OF ANOISON ELECTRONICS LTD AND SHOULD NOT BE USED WITHOUT WRITTEN PERMISSION COPYRIGHT © 2024 ANOISON ELECTRONICS LTD	
	.XX	±0.13 [.005"]	
	.X	±0.20 [.008"]	
	X	±0.50 [.019"]	
	X°	±1°	
	X*	±2°	



TITLE			
N STRAIGHT MALE CRIMP FOR LL400 CABLE			
VIEW	PART NO.		
	ANO 5111-2245-1		
SIZE	SCALE	SHEET	REV.
A3	2.5:1	I/I	A