

4 3 2 1

REVISIONS			
REV.	DESCRIPTION	DATE	APPROVED
A	INITIAL RELEASE	02/06/16	J. QU
B	8.5 N.M WAS 2.7 N.M, REMOVED 7.5 ADDED PIM3	06/04/16	J. QU

MATERIAL & FINISH:

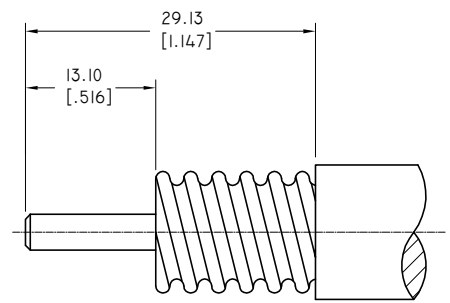
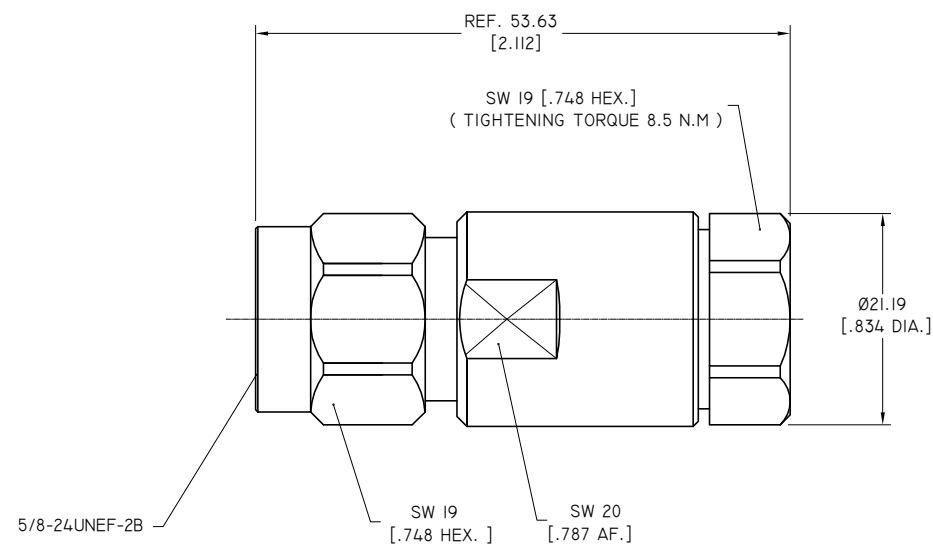
- 1 BODY: BRASS, ALBALOY PLATED
- 2 CENTER CONTACT: PHOSPHOR BRONZE, SILVER PLATED
- 3 INSULATOR: PTFE
- 4 COUPLING NUT: BRASS, ALBALOY PLATED

ELECTRICAL DATA:

- 1 IMPEDANCE: 50 Ω
- 2 FREQUENCY RANGE: DC~6 GHZ
- 3 VSWR: ≤1.25 AT DC~3 GHZ
- 4 PIM3: 155 DBC MIN AT 2X20W (900 MHZ)

ENVIRONMENTAL DATA:

- 1 TEMPERATURE RANGE: -65 °C ~ +125 °C
- 2 2011/65/EU (RoHS): COMPLIANT



CABLE STRIPPING DIMENSIONS

DRAWN	P. CHEN	DATE	06/04/16
CHECKED	L. YANG	DATE	06/04/16
APPROVED	J. QU	DATE	06/04/16
UNLESS OTHERWISE SPECIFIED DIMENSIONS ARE IN MILLIMETERS, DIMENSIONS IN [] ARE IN INCHES FOR CUSTOMER REFERENCE ONLY UNLESS OTHERWISE SPECIFIED TOLERANCE ARE:		THESE DRAWINGS AND SPECIFICATIONS ARE THE PROPERTY OF ANOISON ELECTRONICS LTD AND SHOULD NOT BE USED WITHOUT WRITTEN PERMISSION COPYRIGHT © 2016 ANOISON ELECTRONICS LTD	
.XX	±0.13 [.005"]		
.X	±0.20 [.008"]		
X	±0.50 [.019"]		
X°	±1°		
X°	±2°		

TITLE
N STRAIGHT MALE CLAMP FOR 1/2" SUPER FLEX CABLE

VIEW

PART NO.
ANO 5111-2244

SIZE A3	SCALE 2:1	SHEET 1/1	REV. B
-------------------	---------------------	---------------------	------------------

4 3 2 1