

**MATERIAL & FINISH:**

1. BODY: BRASS, NICKEL PLATED
2. CENTER CONTACT: PHOSPHOR BRONZE, SILVER PLATED
3. COUPLING NUT: BRASS, NICKEL PLATED
4. INSULATOR: PTFE

**ELECTRICAL DATA:**

1. IMPEDANCE: 50 Ω
2. FREQUENCY RANGE: DC~6GHZ
3. DC TEST VOLTAGE: 2500V MIN.

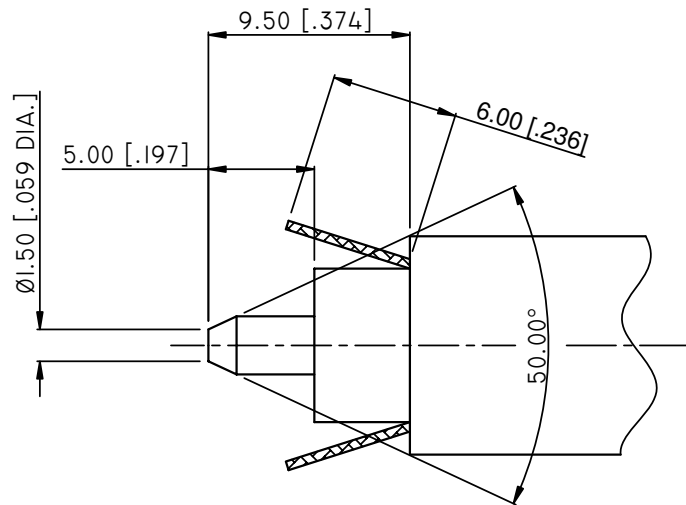
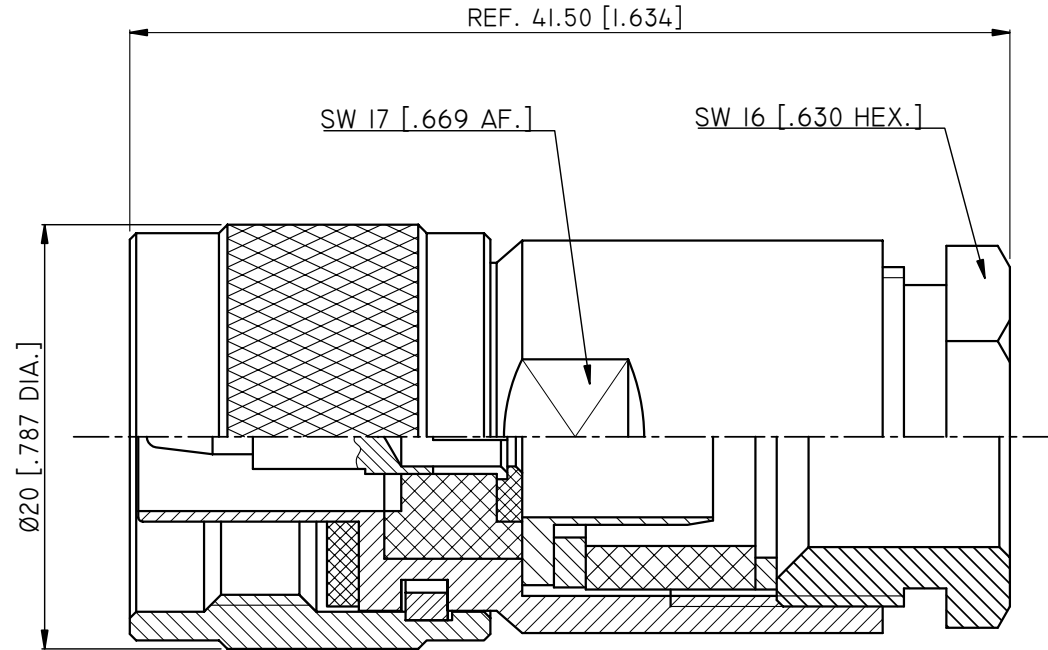
**ENVIRONMENTAL DATA:**

1. TEMPERATURE RANGE: -55°C~+125°C
2. 2011/65/EU (RoHS): COMPLIANT

**MECHANICAL DATA:**

1. MECHANICAL DURABILITY: 500 CYCLES MIN.
2. CENTER CONTACT: CAPTIVATED
3. OUTER CONTACT: CLAMP
4. CONNECTOR RETENTION TENSILE FORCE: 330N [74 LBF]

REVISIONS			
REV.	DESCRIPTION	DATE	APPROVED
A	INITIAL RELEASE	12/18/14	J. QU
B	CABLE STRIPPING DIMENSIONS AND COUPLING NUT CHANGED	12/19/14	J. QU
C	CHAMFER ADDED ONTO THE CABLE INNER	12/20/14	J. QU



CABLE STRIPPING DIMENSIONS

DRAWN	X. B. YANG	DATE	12/20/14				
CHECKED	L. YANG	DATE	12/20/14				
APPROVED	J. QU	DATE	12/20/14				
<small>UNLESS OTHERWISE SPECIFIED DIMENSIONS ARE IN MILLIMETERS, DIMENSIONS IN [ ] ARE IN INCHES FOR CUSTOMER REFERENCE ONLY UNLESS OTHERWISE SPECIFIED TOLERANCE ARE:</small>				<small>THESE DRAWINGS AND SPECIFICATIONS ARE THE PROPERTY OF ANOISON ELECTRONICS LTD AND SHOULD NOT BE USED WITHOUT WRITTEN PERMISSION COPYRIGHT © 2014 ANOISON ELECTRONICS LTD</small>			
				<b>TITLE</b> N STRAIGHT MALE CLAMP FOR LMR400 CABLE CAPTIVATED CONTACT			
				<b>VIEW</b> 			
				<b>PART NO.</b> ANO 5111-2205			
		<b>SIZE</b> A3		<b>SCALE</b> 4:1		<b>SHEET</b> 1/1	
				<b>REV.</b> C			