

**MATERIAL & FINISH:**

- 1 BODY: STAINLESS STEEL, GOLD PLATED
- 2 CENTER CONTACT: BERYLLIUM COPPER ALLOY, GOLD PLATED
- 3 INSULATOR: PTFE
- 4 FASTENING NUT: STAINLESS STEEL, GOLD PLATED

**MECHANICAL DATA:**

- 1 MECHANICAL DURABILITY: 500 CYCLES MIN.
- 2 MATING TORQUE: 0.23 N.M [2 IN.LBS]

**ELECTRICAL DATA:**

- 1 IMPEDANCE: 50 Ω
- 2 FREQUENCY RANGE: DC~12.4 GHz
- 3 VSWR: 1.20 MAX.
- 4 INSERTION LOSS: 0.3 dB MAX. AT DC~1.5 GHz
- 5 OPERATING VOLTAGE: 250 VRMS
- 6 INSULATION RESISTANCE: 1000 MΩ

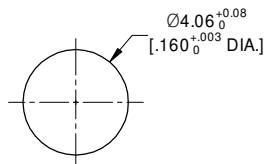
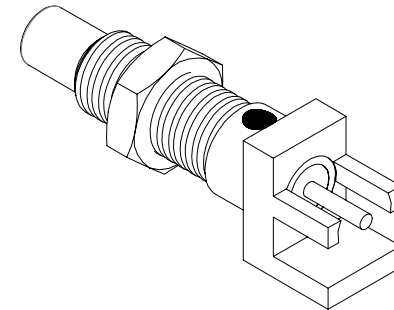
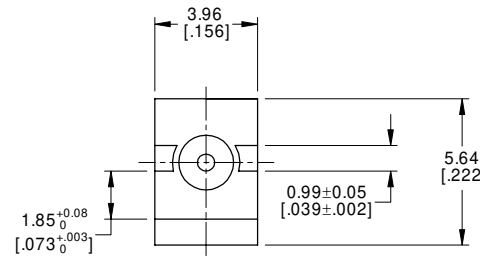
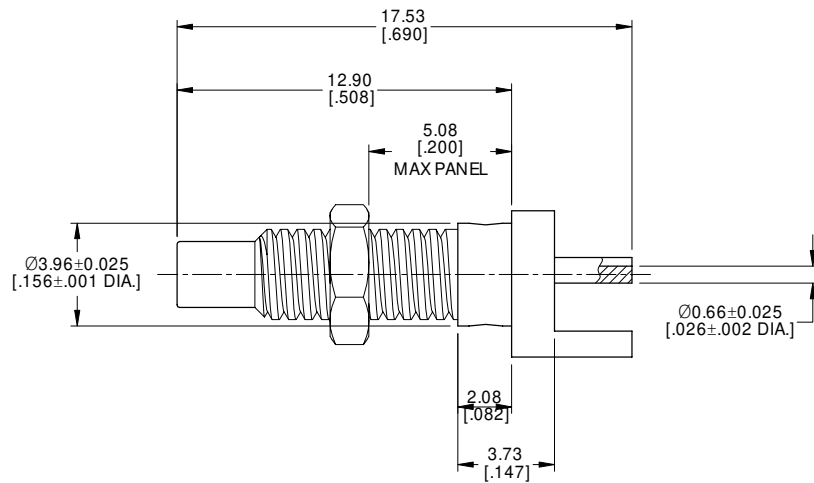
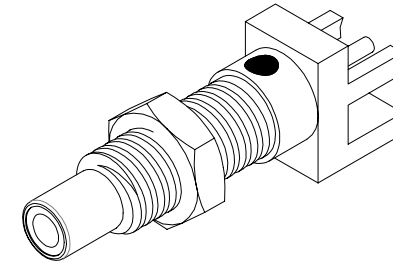
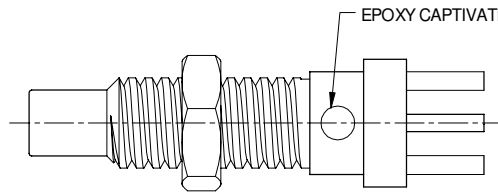
**ENVIRONMENTAL DATA:**

- 1 TEMPERATURE RANGE: -55 °C ~ +125 °C
- 2 2011/65/EU (RoHS) AND 2015/863/(RoHS): COMPLIANT
- 3 1907/2006/EC (REACH): COMPLIANT

**REVISIONS**

| REV. | DESCRIPTION     | DATE     | APPROVED |
|------|-----------------|----------|----------|
| A    | INITIAL RELEASE | 12/09/21 | J QU     |

EPOXY CAPTIVATED, CAPPED WITH SILVER EPOXY



RECOMMENDE MOUNTING HOLE

|          |          |      |          |
|----------|----------|------|----------|
| DRAWN    | XB. YANG | DATE | 12/09/21 |
| CHECKED  | W. YANG  | DATE | 12/09/21 |
| APPROVED | J QU     | DATE | 12/09/21 |

UNLESS OTHERWISE SPECIFIED DIMENSIONS ARE IN MILLIMETERS, DIMENSIONS IN [ ] ARE IN INCHES FOR CUSTOMER REFERENCE ONLY UNLESS OTHERWISE SPECIFIED TOLERANCE ARE:

|     |               |
|-----|---------------|
| .XX | ±0.13 [.005"] |
| .X  | ±0.20 [.008"] |
| X   | ±0.50 [.019"] |
| .X° | ±1°           |
| X°  | ±2°           |

THESE DRAWINGS AND SPECIFICATIONS ARE THE PROPERTY OF ANOISON ELECTRONICS LTD AND SHOULD NOT BE USED WITHOUT WRITTEN PERMISSION COPYRIGHT © 2021 ANOISON ELECTRONICS LTD



TITLE  
SSMC JACK BULKHEAD PCB CONNECT .067 INCH END LAUNCH SOLDER ATTACHMENT

|      |                           |              |              |
|------|---------------------------|--------------|--------------|
| VIEW | PART NO.<br>ANO 4812-4008 |              |              |
|      | SIZE<br>A3                | SCALE<br>5:1 | SHEET<br>1/1 |
|      |                           |              | REV.<br>A    |