

REVISIONS			
REV.	DESCRIPTION	DATE	APPROVED
A	INITIAL RELEASE	11/04/15	J. QU

**MATERIAL & FINISH:**

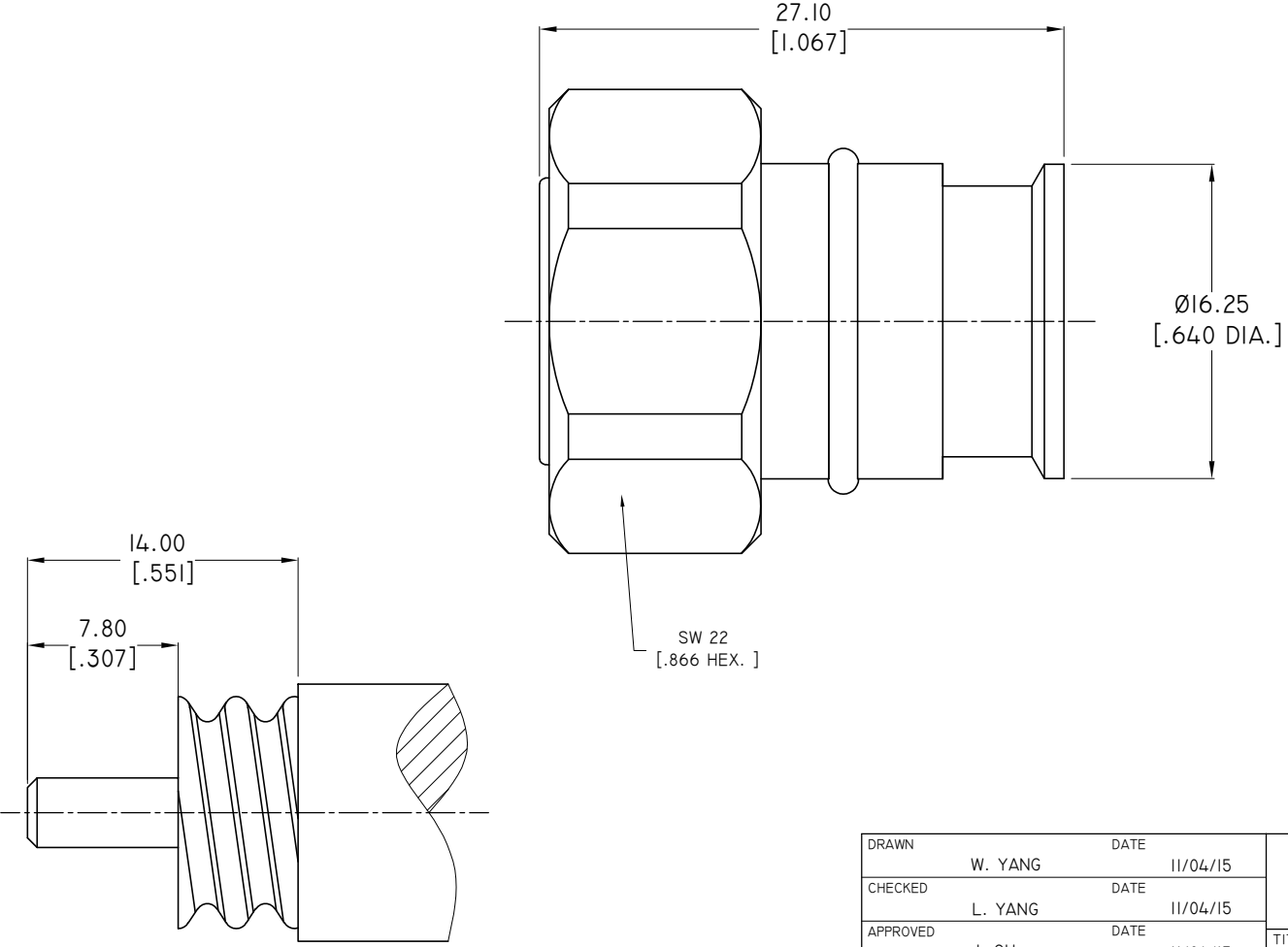
- 1 BODY: BRASS, ALBALOY PLATED
- 2 CENTER CONTACT: PHOSPHOR BRONZE, SILVER PLATED
- 3 INSULATOR: PTFE
- 4 COUPLING NUT: BRASS, ALBALOY PLATED

**ENVIRONMENTAL DATA:**

- 1 TEMPERATURE RANGE: -55°C ~ +125°C
- 2 2011/65/EU (RoHS): COMPLIANT

**ELECTRICAL DATA:**

- 1 IMPEDANCE: 50 Ω
- 2 FREQUENCY RANGE: DC~6 GHz
- 3 TYPICAL VSWR: 1.15
- 4 INSERTION LOSS: ≤ 0.05X√F[GHz] DB
- 5 PIM3: ≥ 166 DBC ( 2X43DBM ) AT 900 MHZ



DRAWN	W. YANG	DATE	11/04/15
CHECKED	L. YANG	DATE	11/04/15
APPROVED	J. QU	DATE	11/04/15
UNLESS OTHERWISE SPECIFIED DIMENSIONS ARE IN MILLIMETERS, DIMENSIONS IN [ ] ARE IN INCHES FOR CUSTOMER REFERENCE ONLY UNLESS OTHERWISE SPECIFIED TOLERANCE ARE:		THESE DRAWINGS AND SPECIFICATIONS ARE THE PROPERTY OF ANOISON ELECTRONICS LTD AND SHOULD NOT BE USED WITHOUT WRITTEN PERMISSION COPYRIGHT © 2015 ANOISON ELECTRONICS LTD	
.XX	±0.13 [.005"]		
.X	±0.20 [.008"]		
X	±0.50 [.019"]		
X°	±1°		
X*	±2°		

**TITLE**  
SCREW 4.3-10 MALE STRAIGHT SOLDER FOR 1/2" SUPER FLEX CABLE

**PART NO.**  
ANO 4711-2023

**VIEW**

SIZE	SCALE	SHEET	REV.
A3	2:1	1/1	A

4 3 2 1

D

C

B

A

4 3 2 1