

MATERIAL & FINISH

1. BODY: BRASS, ALBALOY PLATED
2. CENTER CONTACT: BERYLLIUM COPPER ALLOY, GOLD PLATED
3. FASTENING NUT: NICKEL PLATED
4. LOCK WASHER: NICKEL PLATED
5. INSULATOR: PTFE

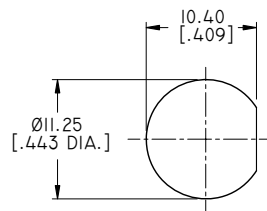
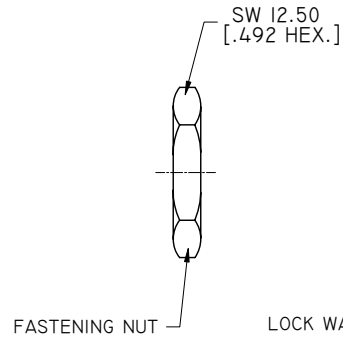
ENVIRONMENTAL DATA:

1. TEMPERATURE RANGE: -55°C~+125°C
2. 2011/65/EU(RoHS) AND 2015/863/(RoHS): COMPLIANT
3. 1999/45/EC(REACH): COMPLIANT

ELECTRICAL SPECIFICATIONS:

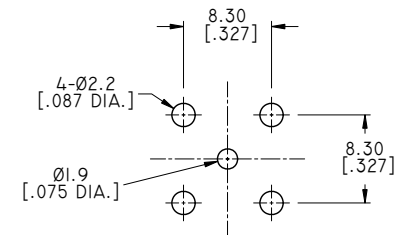
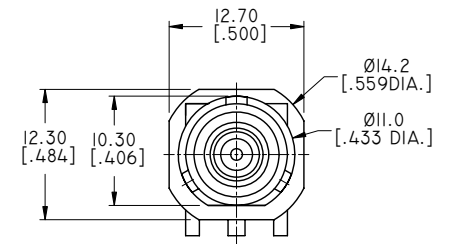
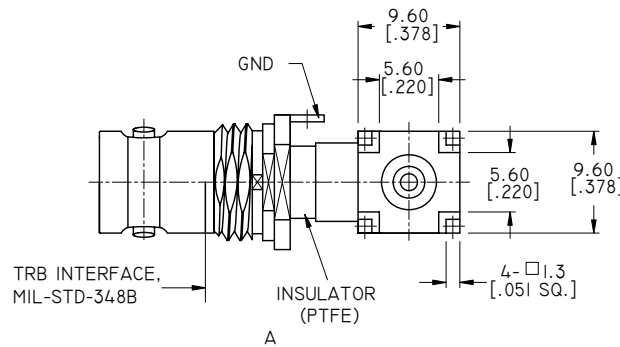
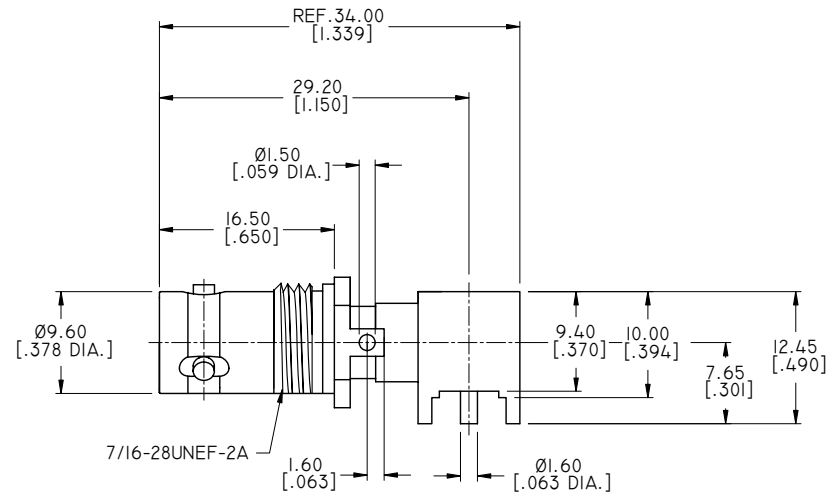
1. WORKING VOLTAGE: 800 VRMS
2. FREQUENCY RANGE: DC~1000 MHZ

REVISIONS			
REV.	DESCRIPTION	DATE	APPROVED
A	INITIAL RELEASE	12/18/15	J. QU
B	1. TRB WAS TRIAX BNC 2. 2015/863/(RoHS): COMPLIANT ADDED 3. 1999/45/EC(REACH): COMPLIANT ADDED	10/30/18	J. QU



RECOMMENDED MOUNTING HOLE

NOETS:
FASTENING NUT, LOCK WASHER INDIVIDUALLY PACKED



PCB LAYOUT

DRAWN	X. B. YANG	DATE	10/30/18
CHECKED	W. YANG	DATE	10/30/18
APPROVED	J. QU	DATE	10/30/18
UNLESS OTHERWISE SPECIFIED DIMENSIONS ARE IN MILLIMETERS. DIMENSIONS IN [] ARE IN INCHES FOR CUSTOMER REFERENCE ONLY UNLESS OTHERWISE SPECIFIED TOLERANCE ARE:		THESE DRAWINGS AND SPECIFICATIONS ARE THE PROPERTY OF ANOISON ELECTRONICS LTD AND SHOULD NOT BE USED WITHOUT WRITTEN PERMISSION COPYRIGHT © 2018 ANOISON ELECTRONICS LTD	
.XX	±0.13 [.005"]		
.X	±0.20 [.008"]		
X	±0.50 [.019"]		
.X°	±1°		
X°	±2°		



TITLE
TRB RIGHT ANGLE BULKHEAD FEMALE FOR PCB

VIEW	PART NO. ANO 4222-5002						
SIZE	A3	SCALE	2:1	SHEET	1/1	REV.	B