

4

3

2

1

MATERIAL & FINISH:

- 1 BODY: STAINLESS STEEL, PASSIVATED
- 2 CENTER CONTACT: BERYLLIUM COPPER ALLOY, GOLD PLATED
- 3 INSULATOR: PTFE

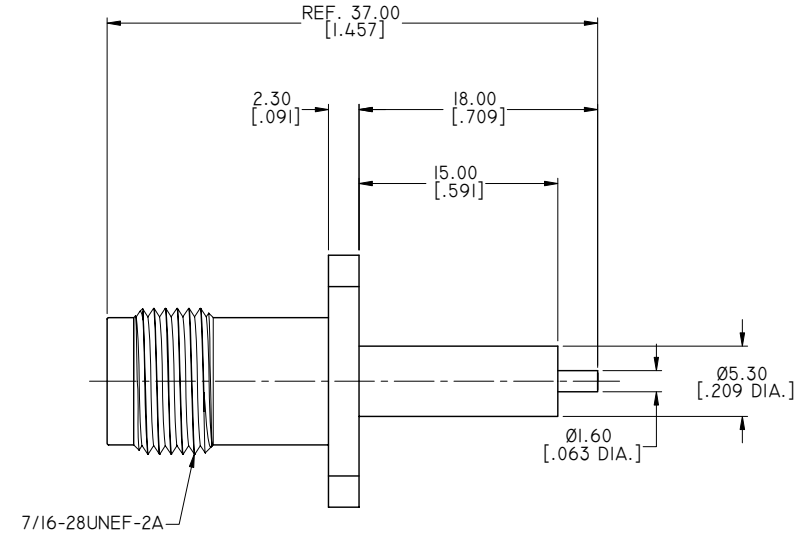
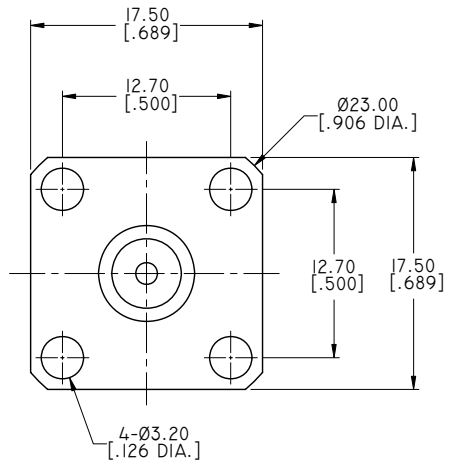
ENVIRONMENTAL DATA:

- 1 TEMPERATURE RANGE: -65°C~+165°C
- 2 2015/863/(RoHS): COMPLIANT
- 3 1907/2006/EC(REACH) AND 1999/45/EC(REACH): COMPLIANT

ELECTRICAL DATA:

- 1 IMPEDANCE: 50 Ω
- 2 FREQUENCY RANGE: DC-18 GHZ
- 3 VSWR: 1.10 + 0.01 X FGHZ MAX.
- 4 AVERAGE POWER: 350 W MAX. AT 8 GHZ

REVISIONS			
REV.	DESCRIPTION	DATE	APPROVED
A	INITIAL RELEASE	02/12/19	J. QU
B	AVERAGE POWER: 200 W AT 18 GHZ CHANGED TO 350 W MAX. AT 10 GHZ	07/04/19	J. QU



DRAWN	X. B. YANG	DATE	07/04/19
CHECKED	W. YANG	DATE	07/04/19
APPROVED	J. QU	DATE	07/04/19
UNLESS OTHERWISE SPECIFIED DIMENSIONS ARE IN MILLIMETERS. DIMENSIONS IN [ ] ARE IN INCHES FOR CUSTOMER REFERENCE ONLY UNLESS OTHERWISE SPECIFIED TOLERANCE ARE:		THESE DRAWINGS AND SPECIFICATIONS ARE THE PROPERTY OF ANOISON ELECTRONICS LTD AND SHOULD NOT BE USED WITHOUT WRITTEN PERMISSION COPYRIGHT © 2019 ANOISON ELECTRONICS LTD	
.XX	±0.08 [.003"]		
.X	±0.20 [.008"]		
X	±0.50 [.019"]		
.X°	±1°		
X°	±2°		



TITLE			
TNCA STRAIGHT FEMALE, 4 HOLE .689 SQ. FLANGE MOUNT			
VIEW		PART NO.	
		ANO 3012-3017	
SIZE	SCALE	SHEET	REV.
A3	2.5:1	I/I	B

4

3

2

1