

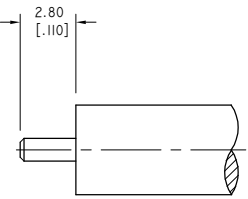
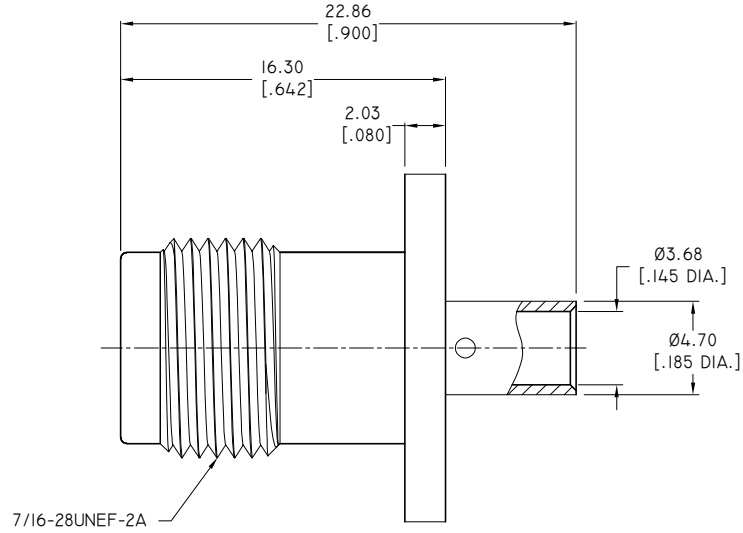
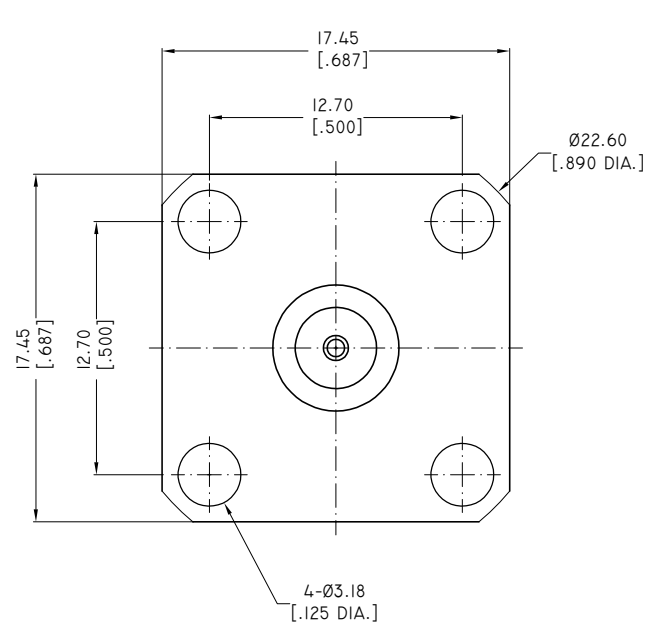
MATERIAL & FINISH:
 1 BODY: STAINLESS STEEL, NICKEL 2 μm /GOLD 0.1 μm PLATED
 2 CENTER CONTACT: BERYLLIUM COPPER ALLOY, NICKEL 2 μm /GOLD 1.25 μm PLATED
 3 INSULATOR: PTFE

ENVIRONMENTAL DATA:
 1 TEMPERATURE RANGE: -40°C~+125°C
 2 2011/65/EU (RoHS): COMPLIANT

ELECTRICAL DATA:
 I. IMPEDANCE: 50 Ω
 2. FREQUENCY RANGE: DC-18 GHZ
 3. VSWR: ≤1.25 MAX. TO 15GHZ
 ≤1.35 MAX. TO 18GHZ
 4. INSERTION LOSS: 0.06X√F(GHZ) dB MAX. @ 3GHZ
 5. WORKING VOLTAGE: 500 VRMS MAX. @ SEA LEVEL.
 6. DIELECTRIC WITHSTANDING VOLTAGE: 1500 VRMS MIN.
 7. R.F. HIPOT VOLTAGE: 1000 VRMS MIN. @ 5MHZ
 8. CORONA LEVEL: 375 VRMS @ 70000 FT.
 9. INSULATION RESISTANCE: 5000 MEGOHMS MIN.
 10. R.F. LEAKAGE: -(90 - FGHZ) DB MIN.
 II. CONTACT RESISTANCE:
 CENTER CONDUCTOR:
 BEFORE ENVIRONMENT: 3.0 MILLIOHM MAX.
 AFTER ENVIRONMENT: 4.0 MILLIOHMS MAX.
 OUTER CONDUCTOR:
 BEFORE ENVIRONMENT: 2.0 MILLIOHM MAX.
 AFTER ENVIRONMENT: NA

MECHANICAL DATA:
 1. MATING CHARACTERISTICS:
 INTERFACE PER MIL-STD-348
 2. FORCE TO ENGAGE @ DISENGAGE:
 TORQUE: 2 INCH-POUNDS MAX.
 LONGITUDINAL FORCE: NA.
 3. CENTER CONTACT RETENTION:
 AXIAL FORCE: 6 POUNDS MIN.
 4. CONNECTOR DURABILITY:
 500 CYCLES MIN @ 12 CYCLES/MINUTE MAX.
 5. PERMEABILITY: LESS THAN 2.0 MU.
 6. CENTER CONDUCTOR CAPTIVATION:
 AXIAL: 6 LBS MIN @ FRONT END;
 3 LBS MAX @ REAR END.
 RADIAL: 4 INCH OUNCES MAX.

REVISIONS			
REV.	DESCRIPTION	DATE	APPROVED
A	INITIAL RELEASE	08/17/18	J. QU



CABLE STRIPPING DIMENSIONS

DRAWN	W. YANG	DATE	08/17/18
CHECKED	X. B. YANG	DATE	08/17/18
APPROVED	J. QU	DATE	08/17/18
UNLESS OTHERWISE SPECIFIED DIMENSIONS ARE IN MILLIMETERS, DIMENSIONS IN [] ARE IN INCHES FOR CUSTOMER REFERENCE ONLY UNLESS OTHERWISE SPECIFIED TOLERANCE ARE:		THESE DRAWINGS AND SPECIFICATIONS ARE THE PROPERTY OF ANOISON ELECTRONICS LTD AND SHOULD NOT BE USED WITHOUT WRITTEN PERMISSION COPYRIGHT © 2018 ANOISON ELECTRONICS LTD	
.XX	±0.13 [.005"]		
.X	±0.20 [.008"]		
X	±0.50 [.019"]		
.X°	±1°		
X°	±2°		

ANOISON

TNCA STRAIGHT FEMALE FLANGE 4-HOLE, SOLDER FOR .141 CABLE

VIEW:

PART NO. ANO 3012-2015

SIZE	SCALE	SHEET	REV.
A3	5:1	1/1	A