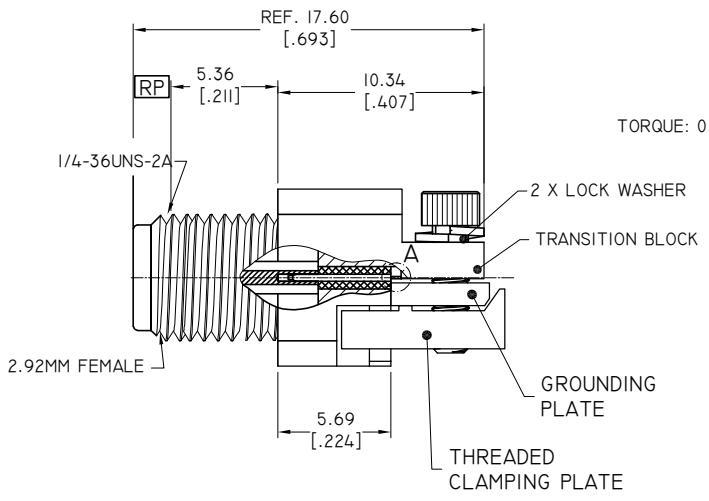
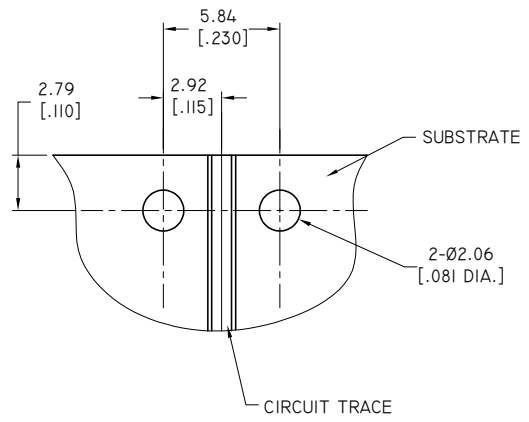


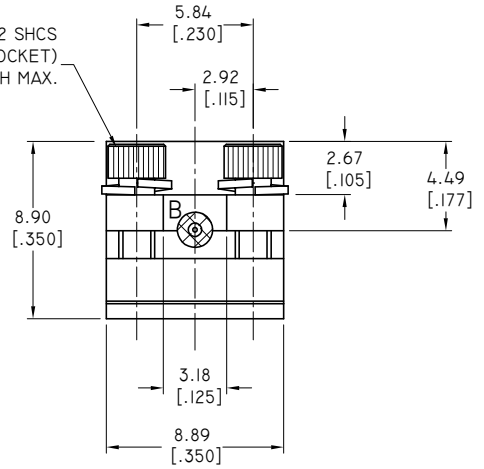
REVISIONS			
REV.	DESCRIPTION	DATE	APPROVED
A	INITIAL RELEASE	12/20/23	J. Q
B	ADDED PCB THICKNESS	01/24/24	J. Q

D

D



2 X #1-72 SHCS  
(1.57[.062] HEX. SOCKET)  
TORQUE: 0.23 N.M MAX. / 2LB.INCH MAX.



**2.92MM CONNECTOR**

1. BODY: STAINLESS STEEL, PASSIVATED
2. CENTER CONTACT: BERYLLIUM COPPER ALLOY, GOLD PLATED
3. INSULATOR: PEI

**TRANSITION BLOCK**

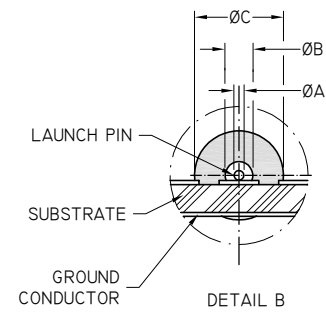
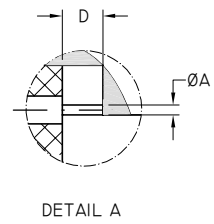
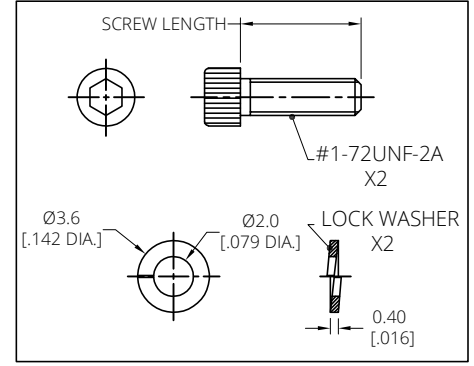
1. TRANSITION BLOCK: BRASS, NICKEL PLATED
2. THREADED CLAMPING PLATE: BRASS, NICKEL PLATED
3. LAUNCH PIN: BERYLLIUM COPPER ALLOY, GOLD PLATED
4. TRANSITION BLOCK DIELECTRIC: PTFE

**ENVIRONMENTAL DATA:**

1. TEMPERATURE RANGE: -55°C~+125°C
2. 2011/65/EU (RoHS): COMPLIANT

**ELECTRICAL SPECIFICATIONS:**

1. IMPEDANCE: 50 Ω
2. FREQUENCY RANGE: DC~40 GHZ



B

B

A

A

PART NO.	Ø A	Ø B	Ø C	D	PCB THICKNESS	SCREW LENGTH	DRAWN	DATE
							W. Y	01/24/24
ANO 292-F1	0.13 [.005]	0.23 [.009]	0.74 [.0290]	0.76 [.030]	UP TO 0.51 [.020]	6.05 [.238]	CHECKED	DATE
ANO 292-F2	0.18 [.007]	0.31 [.012]	0.99 [.0390]	0.76 [.030]			L. Y	01/24/24
ANO 292-F3	0.25 [.010]	0.51 [.020]	1.61 [.0635]	1.27 [.050]	0.51 [.020] TO 1.65 [.065]	7.80 [.307]	APPROVED	DATE
ANO 292-F1-T	0.13 [.005]	0.23 [.009]	0.74 [.0290]	0.76 [.030]			J. Q	01/24/24
ANO 292-F2-T	0.18 [.007]	0.31 [.012]	0.99 [.0390]	0.76 [.030]	UNLESS OTHERWISE SPECIFIED DIMENSIONS ARE IN MILLIMETERS, DIMENSIONS IN [ ] ARE IN INCHES FOR CUSTOMER REFERENCE ONLY UNLESS OTHERWISE SPECIFIED TOLERANCE ARE:	THESE DRAWINGS AND SPECIFICATIONS ARE THE PROPERTY OF ANOISON ELECTRONICS LTD AND SHOULD NOT BE USED WITHOUT WRITTEN PERMISSION COPYRIGHT © 2024 ANOISON ELECTRONICS LTD		
ANO 292-F3-T	0.25 [.010]	0.51 [.020]	1.61 [.0635]	1.27 [.050]			.XX ±0.13 [.005"] .X ±0.20 [.008"] X ±0.50 [.019"] X° ±1° X° ±2°	



TITLE  
2.92MM FEMALE END LAUNCH CONNECTOR  
THD-IN SUPER SMALL

VIEW	PART NO. ANO 292-FX
SIZE A3	SCALE 4:1
SHEET 1/1	REV. B

4

3

2

1

4

3

2

1