

**1.0 MATERIAL & FINISH**

- 1.1 BODY: STAINLESS STEEL, PASSIVATED
- 1.2 CENTER CONTACT: BERYLLIUM COPPER ALLOY, GOLD PLATED
- 1.3 INSULATOR: PEI

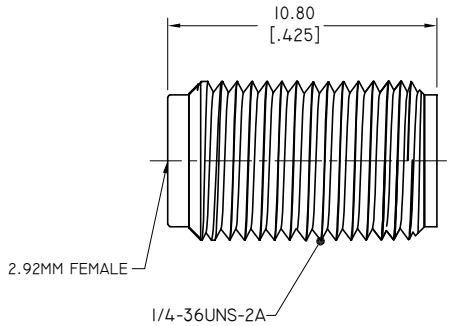
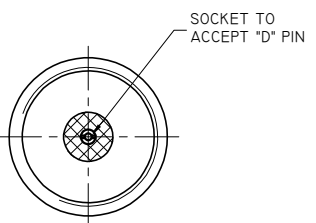
**2.0 ENVIRONMENTAL DATA:**

- 2.1 TEMPERATURE RANGE: -65°C~+165°C
- 2.2 2011/65/EU (RoHS): COMPLIANT

**3.0 ELECTRICAL SPECIFICATIONS:**


- 3.1 IMPEDANCE: 50 Ω
- 3.2 FREQUENCY RANGE: DC~40GHZ
- 3.3 VSWR: ≤1.10 DC~27GHZ  
           ≤1.15 27~40GHZ

REVISIONS			
REV.	DESCRIPTION	DATE	APPROVED
A	INITIAL RELEASE	07/18/24	J. Q

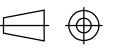


PART NO.	D	MAX. PIN DEPTH
ANO 2912-5205-1	Ø0.23 [.009 DIA.]	1.65[.065]
ANO 2912-5205-2	Ø0.30 [.012 DIA.]	1.65[.065]
ANO 2912-5205-3	Ø0.51 [.020 DIA.]	1.65[.065]

DRAWN	W. Y	DATE	07/18/24
CHECKED	X. Y	DATE	07/18/24
APPROVED	J. Q	DATE	07/18/24
UNLESS OTHERWISE SPECIFIED DIMENSIONS ARE IN MILLIMETERS, DIMENSIONS IN [ ] ARE IN INCHES FOR CUSTOMER REFERENCE ONLY UNLESS OTHERWISE SPECIFIED TOLERANCE ARE:		THESE DRAWINGS AND SPECIFICATIONS ARE THE PROPERTY OF ANOISON ELECTRONICS LTD AND SHOULD NOT BE USED WITHOUT WRITTEN PERMISSION COPYRIGHT © 2024 ANOISON ELECTRONICS LTD	
.XX	±0.13 [.005"]		
.X	±0.20 [.008"]		
X	±0.50 [.019"]		
.X°	±1°		
X°	±2°		



**TITLE**  
2.92MM STRAIGHT FEMALE THREAD-IN TO ACCEPT "D" PIN

**VIEW** 

**PART NO.**  
ANO 2912-5205

<b>SIZE</b> A3	<b>SCALE</b> 5:1	<b>SHEET</b> 1/1	<b>REV.</b> A
-------------------	---------------------	---------------------	------------------

4

3

2

1

D

C

B

A

D

C

B

A

4

3

2

1