

**MATERIAL & FINISH:**

- 1 BODY: BRASS, NICKEL PLATE
- 2 CENTER CONTACT: BERYLLIUM COPPER ALLOY, GOLD PLATED
- 3 INSULATOR: PTFE & PEI
- 4 SPRING WASHER: STAINLESS STEEL
- 5 SCREW: STEEL

**ENVIRONMENTAL DATA:**

- 1 TEMPERATURE RANGE: -55 °C~+125 °C
- 2 2011/65/EU (RoHS) AND 2015/863/(RoHS): COMPLIANT
- 3 1999/2006/EC (REACH): COMPLIANT

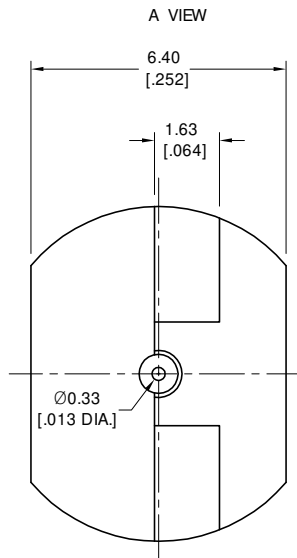
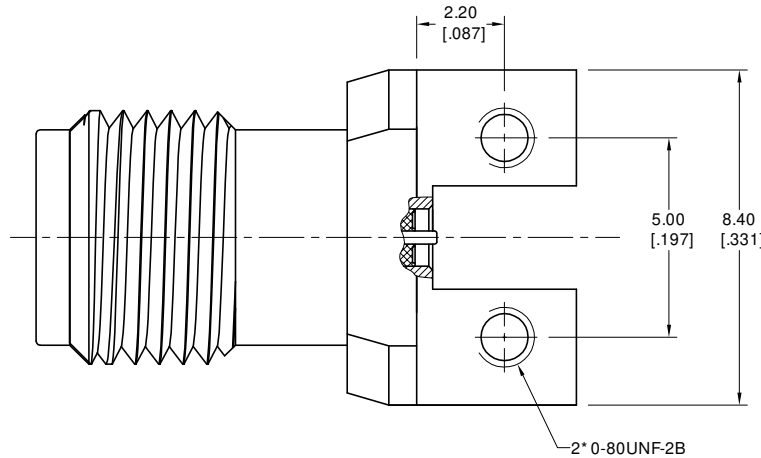
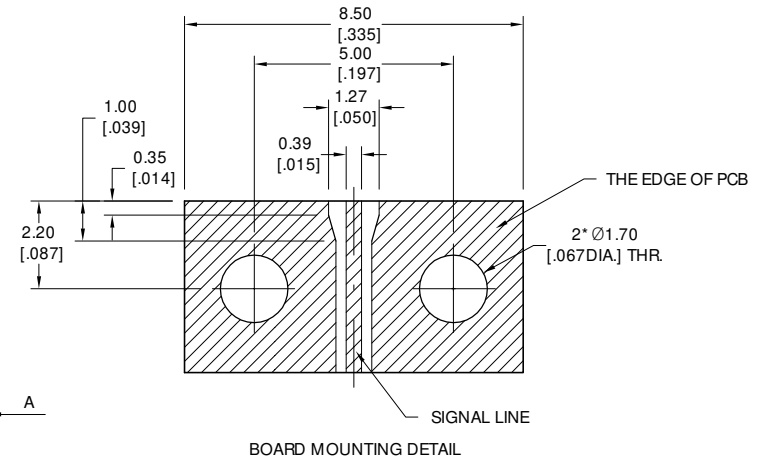
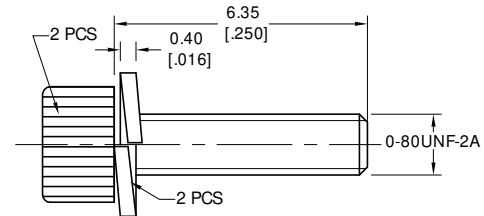
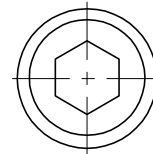
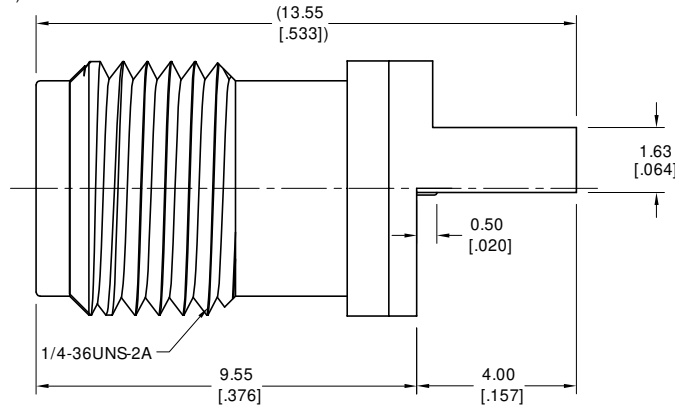
**ELECTRICAL DATA:**

- 1 IMPEDANCE: 50 Ω
- 2 FREQUENCY RANGE: DC~40 GHz
- 3 VSWR: 1.30 MAX

**NOTES:**

- 1 0-80UNF-2A SCREW TIGHTENING TORQUE IS 0.09N.M
- 2 RECOMMENDED PCB THICKNESS IS 1.0MM~2.54MM
- 3 PACKAGING: PRE-POSITIONING OF THE SCREWS, TRAY (225X165X25, 5#) PACKAGING, 100 PCS/TRAY

REVISIONS			
REV.	DESCRIPTION	DATE	APPROVED
C	ADDED NOTES, CHANGED ELECTRICAL DATA	01/24/24	J Q
D	CHANGED NOTES	05/07/24	J Q
E	CHANGED NOTES	07/01/24	J Q



DRAWN	P. C	DATE	07/01/24
CHECKED	W. Y	DATE	07/01/24
APPROVED	J Q	DATE	07/01/24
UNLESS OTHERWISE SPECIFIED DIMENSIONS ARE IN MILLIMETERS, DIMENSIONS IN [ ] ARE IN INCHES FOR CUSTOMER REFERENCE ONLY UNLESS OTHERWISE SPECIFIED TOLERANCE ARE:		THESE DRAWINGS AND SPECIFICATIONS ARE THE PROPERTY OF ANOISON ELECTRONICS LTD AND SHOULD NOT BE USED WITHOUT WRITTEN PERMISSION COPYRIGHT © 2024 ANOISON ELECTRONICS LTD	
XX	±0.13 [0.005"]		
X	±0.20 [0.008"]		
x	±0.50 [0.019"]		
∠	±1°		
∠	±2°		

**TITLE**  
2.92MM STRAIGHT FEMALE PCB END LAUNCH,  
PCB THICKNESS 1.0mm~2.54mm

**VIEW**

**PART NO.**  
ANO 2912-4195

SIZE	SCALE	SHEET	REV.
A3	8:1	1/1	E

D

C

B

A

D

C

B

A

4

3

2

1

4

3

2

1