

4 3 2 1

REVISIONS			
REV.	DESCRIPTION	DATE	APPROVED
A	INITIAL RELEASE	06/01/23	J. Q

MATERIAL & FINISH:

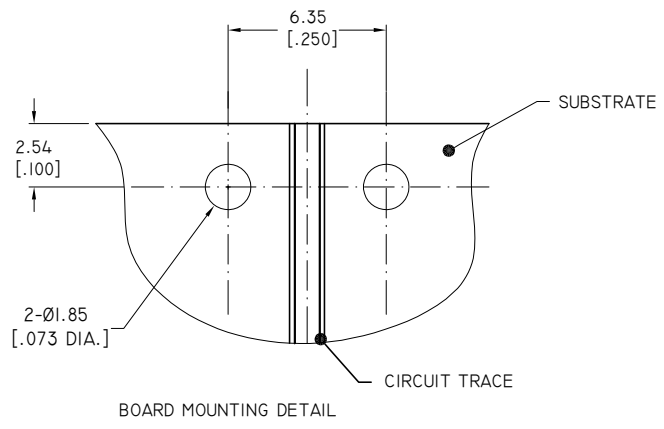
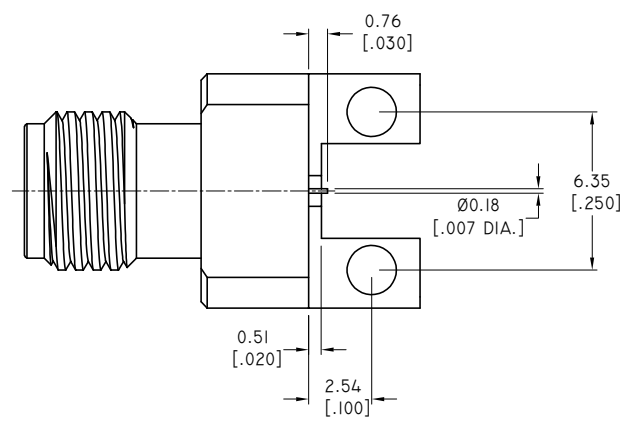
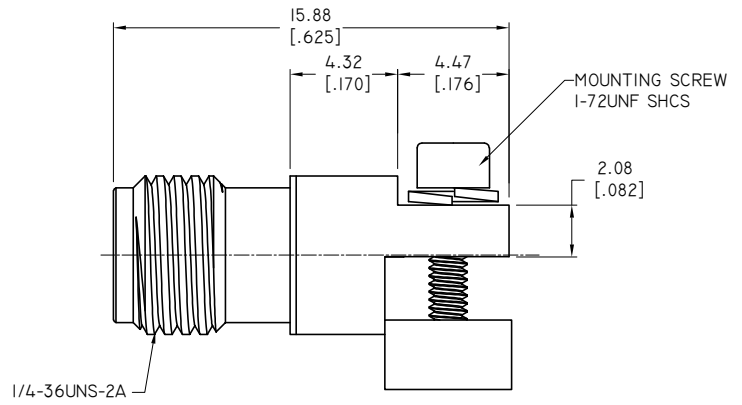
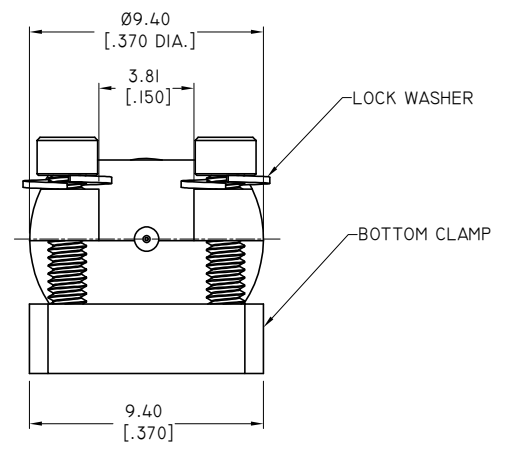
- 1 BODY: STAINLESS STEEL, PASSIVATED
- 2 CENTER CONTACT: BERYLLIUM COPPER ALLOY, GOLD PLATED
- 3 INSULATOR: PTFE & PEI
- 4 SCREWS: STAINLESS STEEL, PASSIVATED

ENVIRONMENTAL DATA:

- 1 OPERATING TEMPERATURE: -65°C~+165°C
- 2 2011/65/EU (RoHS): COMPLIANT

ELECTRICAL DATA:

- 1 IMPEDANCE: 50 OHMS
- 2 FREQUENCY RANGE: DC~40 GHZ



DRAWN	W. Y	DATE	06/01/23
CHECKED	X. Y	DATE	06/01/23
APPROVED	J. Q	DATE	06/01/23
UNLESS OTHERWISE SPECIFIED DIMENSIONS ARE IN MILLIMETERS, DIMENSIONS IN [] ARE IN INCHES FOR CUSTOMER REFERENCE ONLY UNLESS OTHERWISE SPECIFIED TOLERANCE ARE:		THESE DRAWINGS AND SPECIFICATIONS ARE THE PROPERTY OF ANOISON ELECTRONICS LTD AND SHOULD NOT BE USED WITHOUT WRITTEN PERMISSION COPYRIGHT © 2023 ANOISON ELECTRONICS LTD	
.XX	±0.08 [.003"]		
.X	±0.20 [.008"]		
X	±0.50 [.019"]		
.X°	±1°		
X°	±2°		

TITLE
2.92MM FEMALE EDGE LAUNCH, .250 PROFILE

VIEW

PART NO.
ANO 2912-4179

SIZE	SCALE	SHEET	REV.
A3	5:1	1/1	A

D
C
B
A

D
C
B
A

4 3 2 1